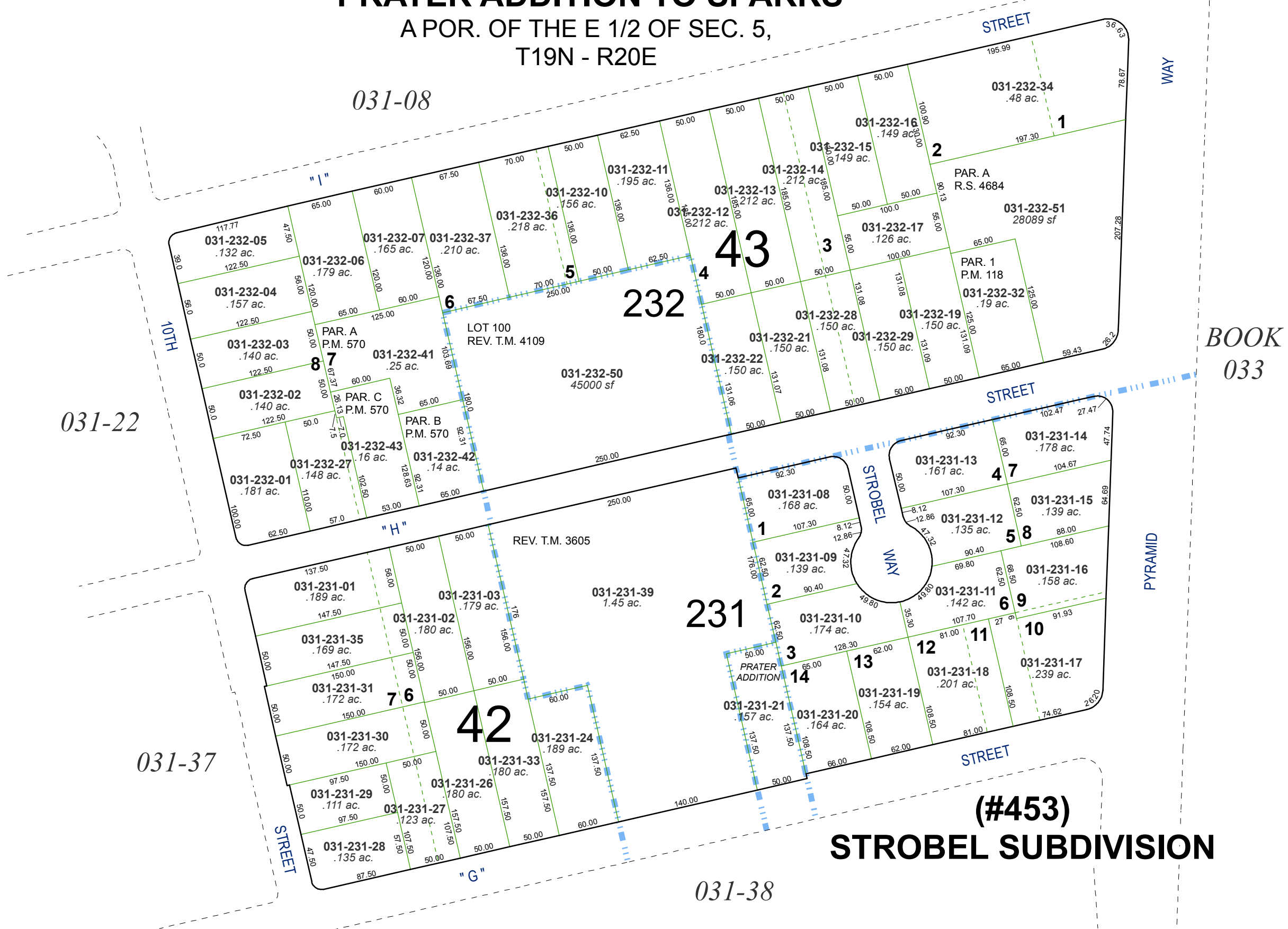


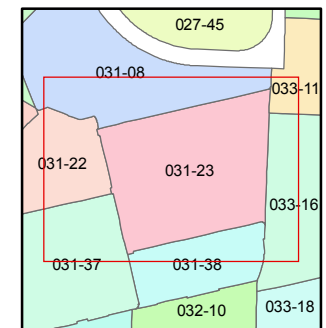
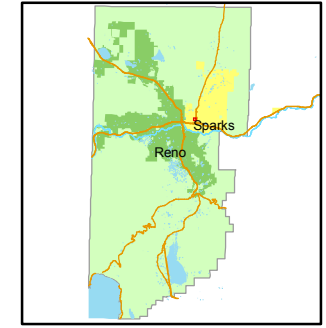
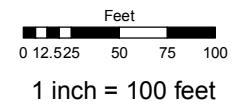
**(#213)**  
**PRATER ADDITION TO SPARKS**  
 A POR. OF THE E 1/2 OF SEC. 5,  
 T19N - R20E



Assessor's Map Number  
**031-23**

STATE OF NEVADA  
**WASHOE COUNTY**  
**ASSESSOR'S OFFICE**  
 Joshua G. Wilson, Assessor

1001 East Ninth Street  
 Building D  
 Reno, Nevada 89512  
 (775) 328-2231



created by: NLH 3/31/2010  
 last updated: \_\_\_\_\_  
 area previously shown on map(s) \_\_\_\_\_

NOTE: This map was prepared for the use of the Washoe County Assessor for assessment and illustrative purposes only. It does not represent a survey of the premises. No liability is assumed as to the sufficiency or accuracy of the data delineated hereon.