

(#511) MONGOLO SUBDIVISION

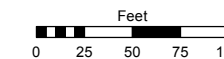
POR. OF SE 1/4 OF THE SE 1/4 OF SECTION 33, T20N - R20E

Assessor's Map Number

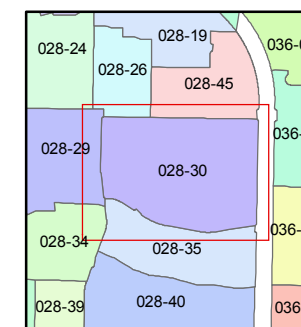
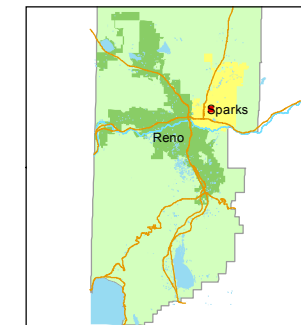
028-30

STATE OF NEVADA
WASHOE COUNTY
ASSESSOR'S OFFICE
 Joshua G. Wilson, Assessor

1001 East Ninth Street
 Building D
 Reno, Nevada 89512
 (775) 328-2231



1 inch = 100 feet



created by: CFB 04/24/2013

last updated: CFB 02/04/2014

area previously shown on map(s)

NOTE: This map was prepared for the use of the Washoe County Assessor for assessment and illustrative purposes only. It does not represent a survey of the premises. No liability is assumed as to the sufficiency or accuracy of the data delineated hereon.

