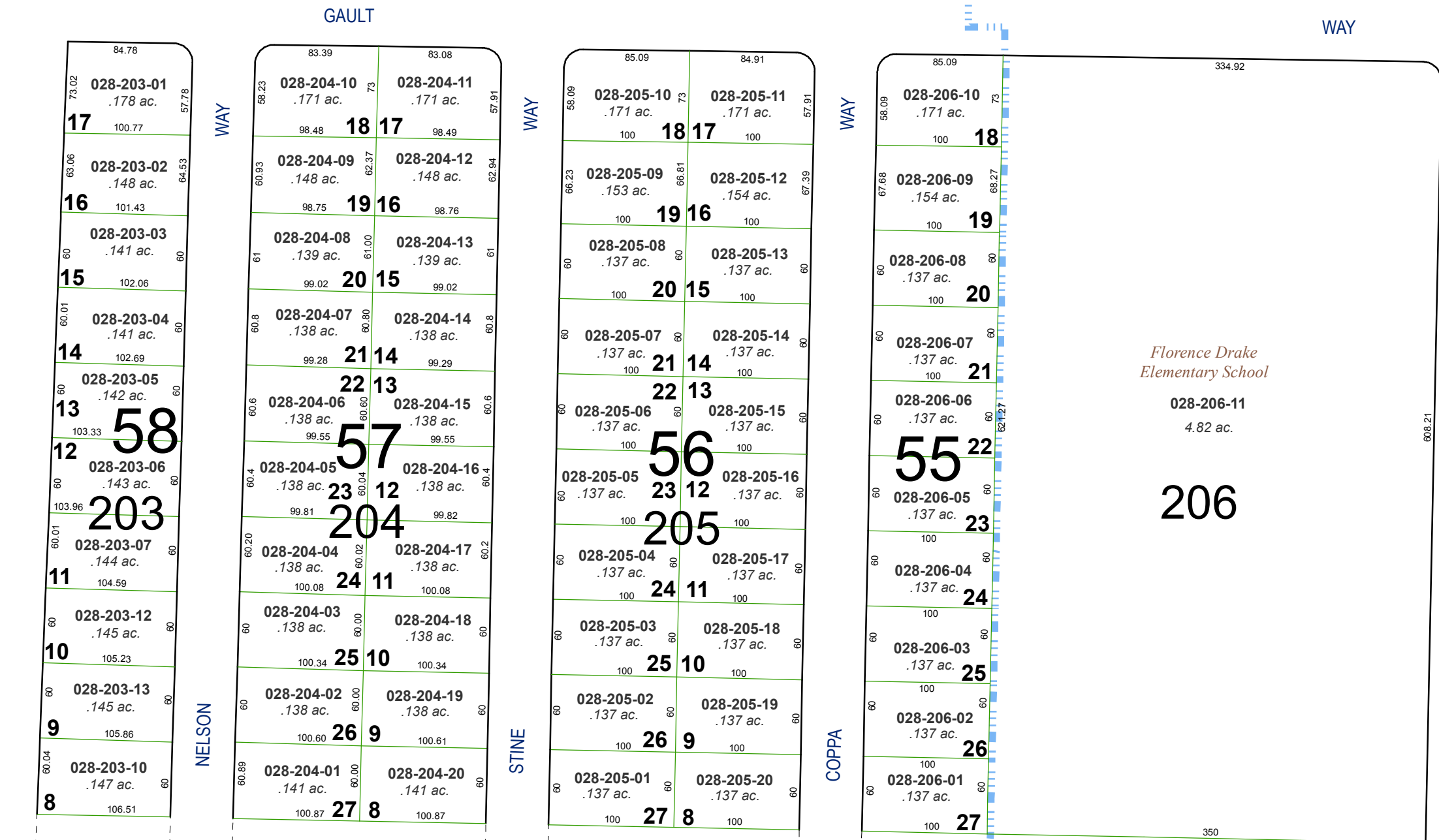
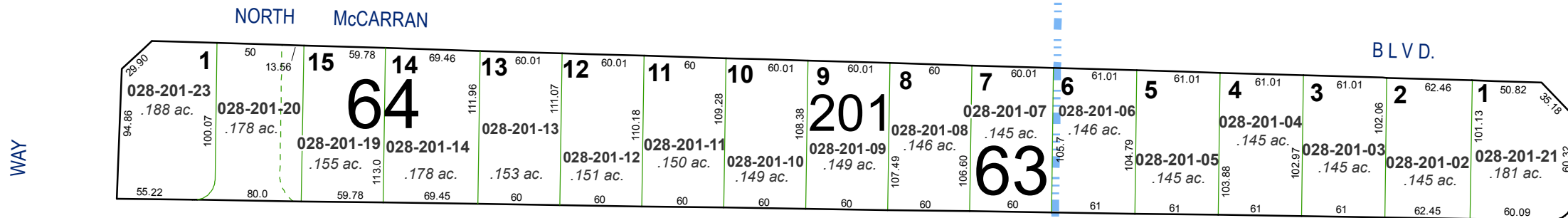


GREENBRAE TERRACE SUBDIVISIONS

PORTION OF THE SW 1/4 OF SECTION 33, T20N - R20E

**(#680)
ADDITION NO. 17**

**(#654)
ADDITION NO. 16**



*Florence Drake
Elementary School*

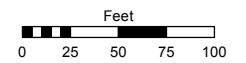
028-206-11
4.82 ac.

206

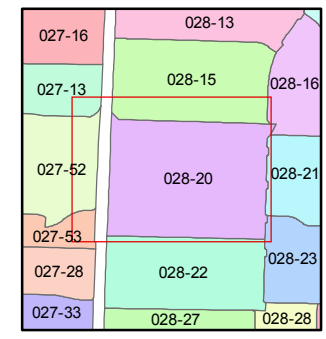
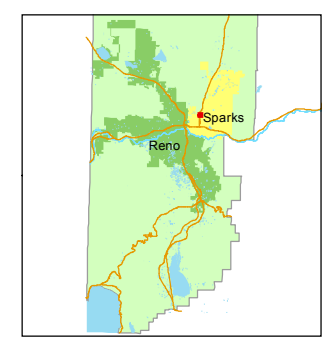
Assessor's Map Number
028-20

STATE OF NEVADA
WASHOE COUNTY
ASSESSOR'S OFFICE
Joshua G. Wilson, Assessor

1001 East Ninth Street
Building D
Reno, Nevada 89512
(775) 328-2231



1 inch = 100 feet



created by: CFB 12/6/2013

last updated: _____

area previously shown on map(s) _____

NOTE: This map was prepared for the use of the Washoe County Assessor for assessment and illustrative purposes only. It does not represent a survey of the premises. No liability is assumed as to the sufficiency or accuracy of the data delineated hereon.