

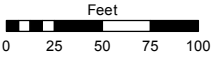
PORTION OF THE NW 1/4 OF SECTION 33
T20N - R20E

Assessor's Map Number

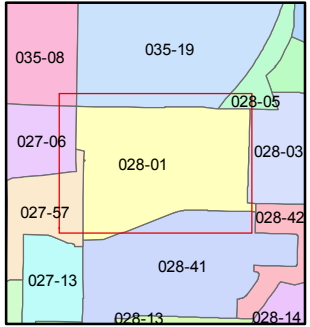
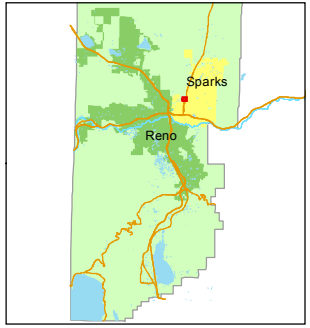
028-01

STATE OF NEVADA
WASHOE COUNTY
ASSESSOR'S OFFICE
Michael E. Clark, Assessor

1001 East Ninth Street
Building D
Reno, Nevada 89512
(775) 328-2231



1 inch = 100 feet



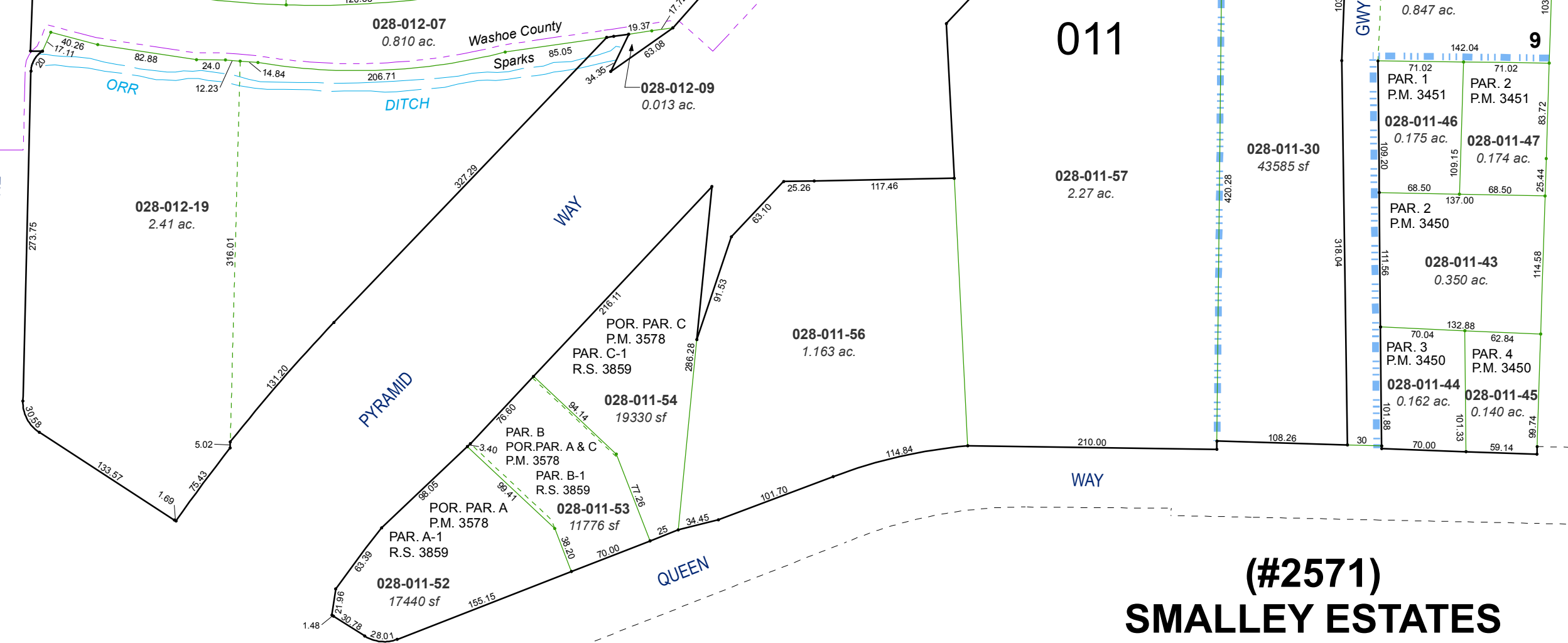
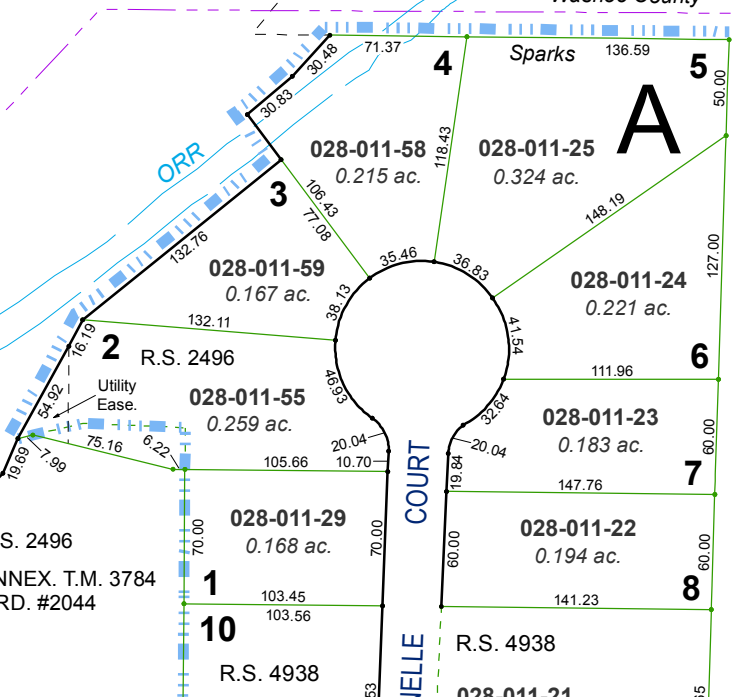
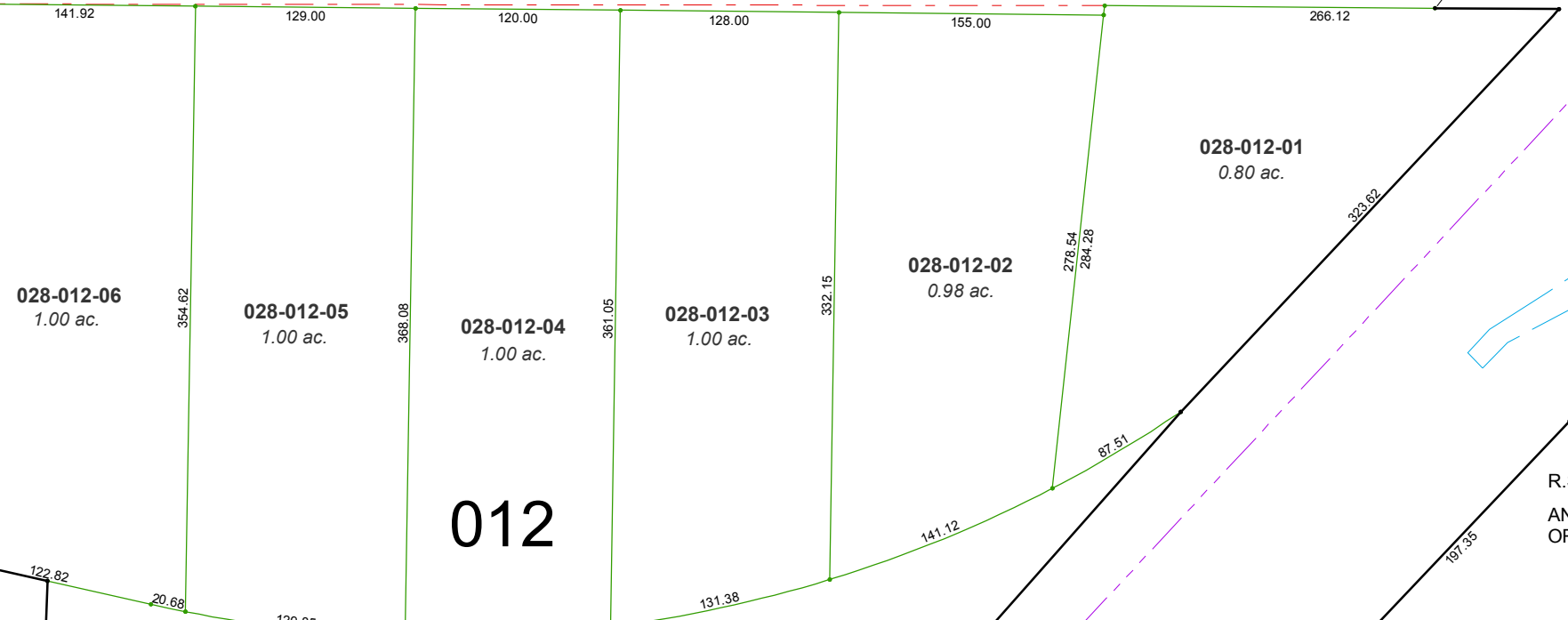
created by: TWT 11/30/2015

last updated: KSB 6/16/16 KSB 6/30/17

area previously shown on map(s)

NOTE: This map was prepared for the use of the Washoe County Assessor for assessment and illustrative purposes only. It does not represent a survey of the premises. No liability is assumed as to the sufficiency or accuracy of the data delineated hereon.

29 28
32 33



(#2571)
SMALLEY ESTATES
SUBDIVISION