

**(#491)
WESTERLY ADDITION "C" TO
GREEN BRAE TERRACE SUBDIVISION**

PORTION OF THE NE 1/4 OF SEC. 5, T19N - R20E
& SE 1/4 OF SEC. 32, T20N - R20E

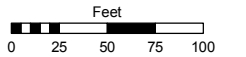
**(#694)
PYRAMID PARK
SUBDIVISION NO. 1
PORTION BLOCK "J"**

Assessor's Map Number

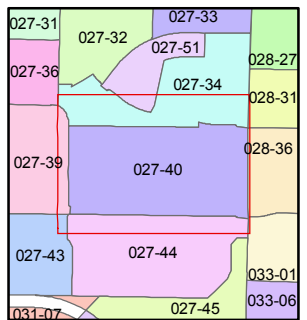
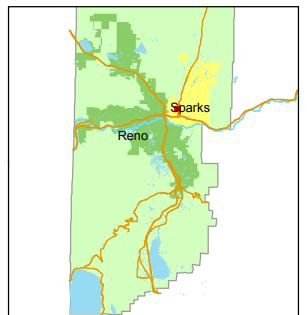
027-40

STATE OF NEVADA
**WASHOE COUNTY
ASSESSOR'S OFFICE**
Michael E. Clark, Assessor

1001 East Ninth Street
Building D
Reno, Nevada 89512
(775) 328-2231



1 inch = 100 feet

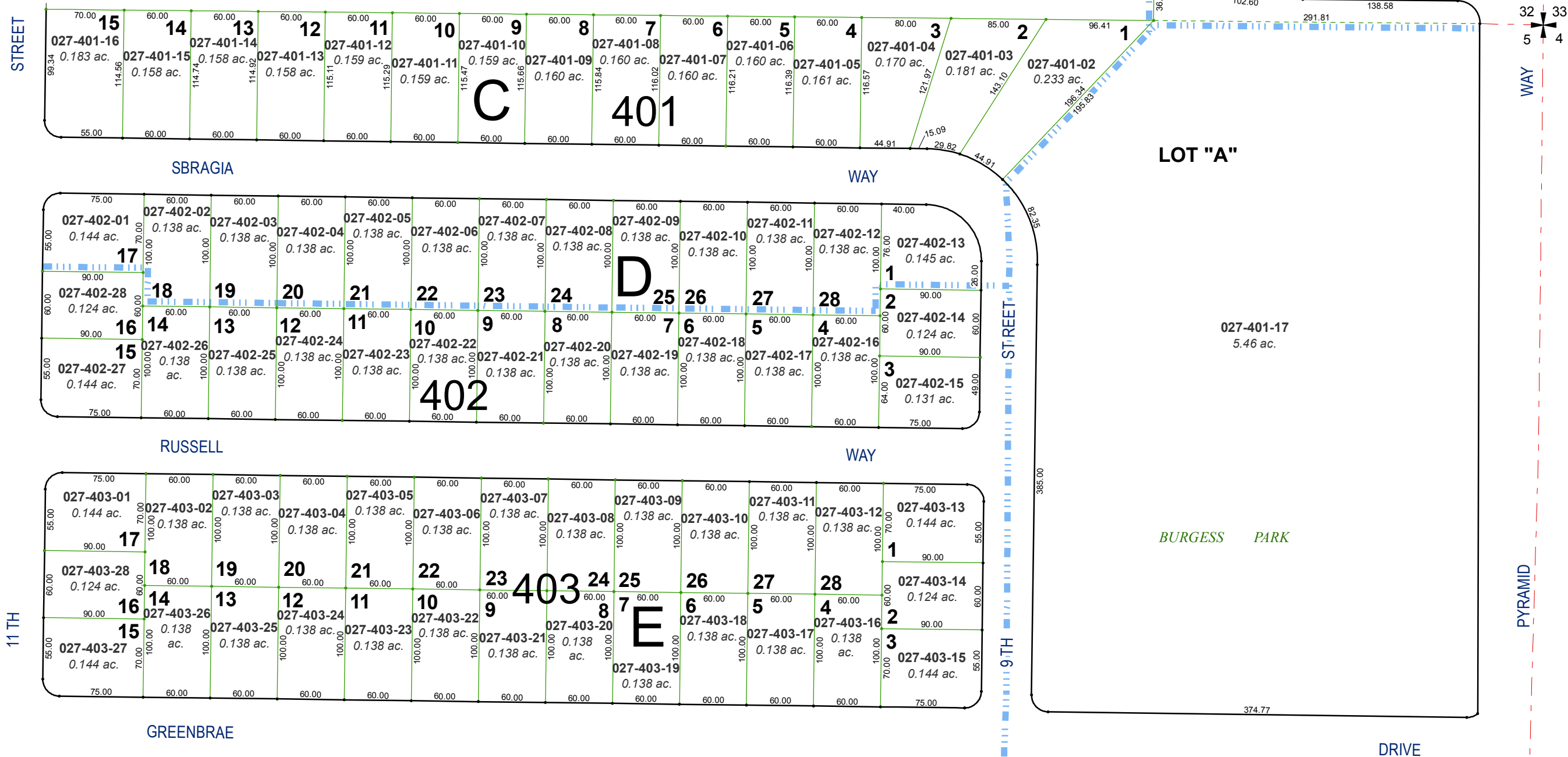


created by: TWT 11/9/2015

last updated: _____

area previously shown on map(s) _____

NOTE: This map was prepared for the use of the Washoe County Assessor for assessment and illustrative purposes only. It does not represent a survey of the premises. No liability is assumed as to the sufficiency or accuracy of the data delineated hereon.



**(#486)
WESTERLY ADDITION "A" TO
GREEN BRAE TERRACE SUBDIVISION**

**(#457)
NORTHMORE PARK
SUBDIVISION**

OXFORD AVENUE