

# (#1287) YORKSHIRE MANOR NO. 2

A PLANNED UNIT DEVELOPMENT

POR. SW 1/4 SEC. 32, T20N - R20E

YORK

WAY

Assessor's Map Number

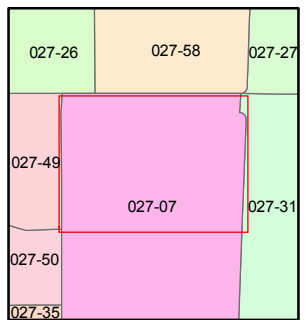
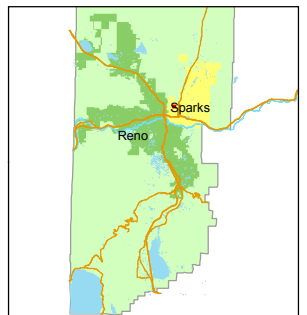
**027-07-S2**

STATE OF NEVADA  
**WASHOE COUNTY**  
 ASSESSOR'S OFFICE  
 Michael E. Clark, Assessor

1001 East Ninth Street  
 Building D  
 Reno, Nevada 89512  
 (775) 328-2231



1 inch = 40 feet



created by: TWT 10/13/2015

last updated: \_\_\_\_\_

area previously shown on map(s) \_\_\_\_\_

NOTE: This map was prepared for the use of the Washoe County Assessor for assessment and illustrative purposes only. It does not represent a survey of the premises. No liability is assumed as to the sufficiency or accuracy of the data delineated hereon.

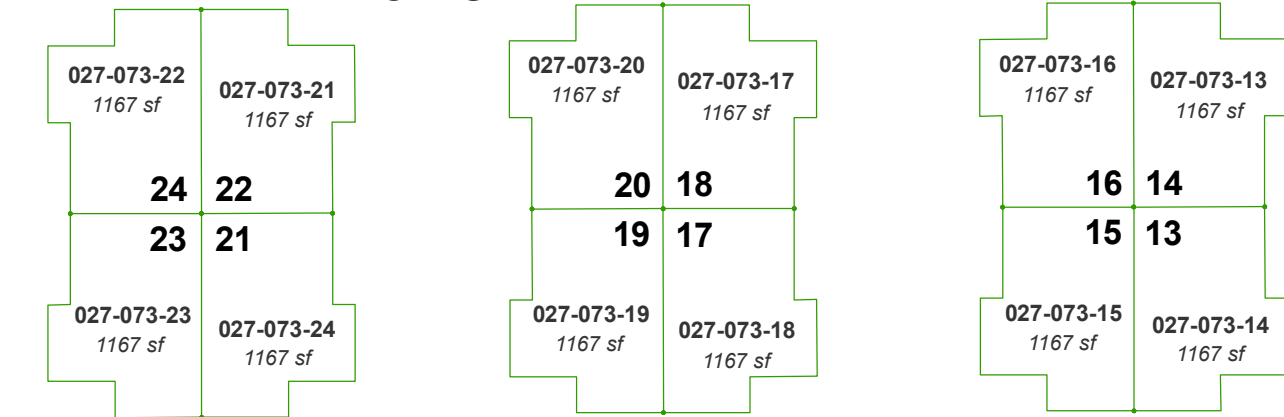
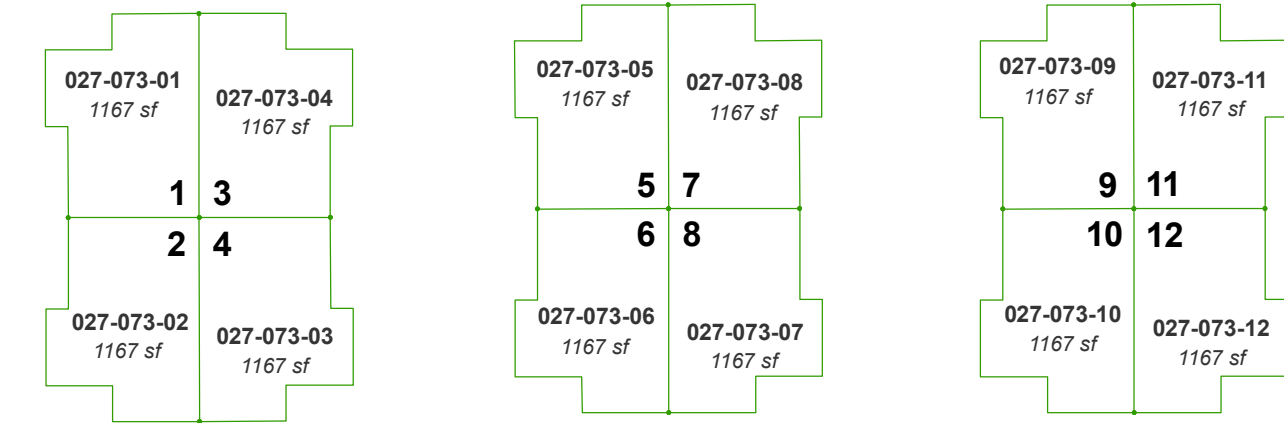
STREET

BLVD.

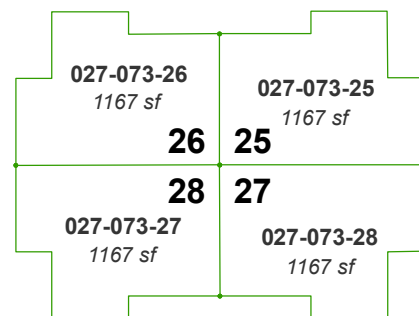
ROCK

073

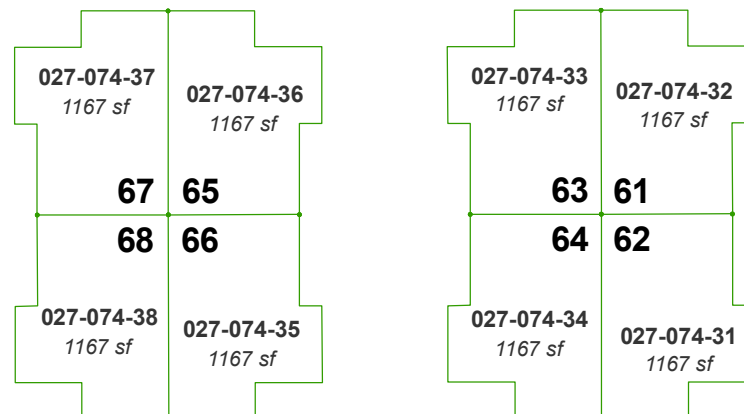
074



COMMON AREA "A"



OPPIO



COMMON AREA "B"

