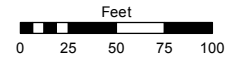


**(#1287)**  
**YORKSHIRE MANOR NO. 2**  
 A PLANNED UNIT DEVELOPMENT  
 POR. SW 1/4 SEC. 32, T20N - R20E

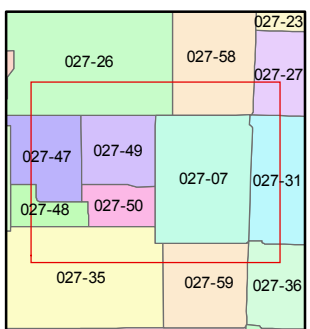
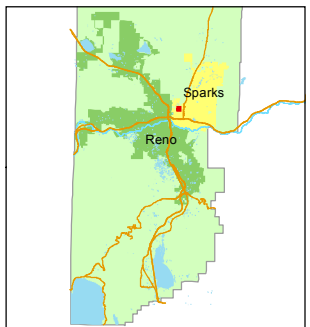
Assessor's Map Number  
**027-07**

STATE OF NEVADA  
**WASHOE COUNTY**  
 ASSESSOR'S OFFICE  
 Michael E. Clark, Assessor

1001 East Ninth Street  
 Building D  
 Reno, Nevada 89512  
 (775) 328-2231



1 inch = 100 feet

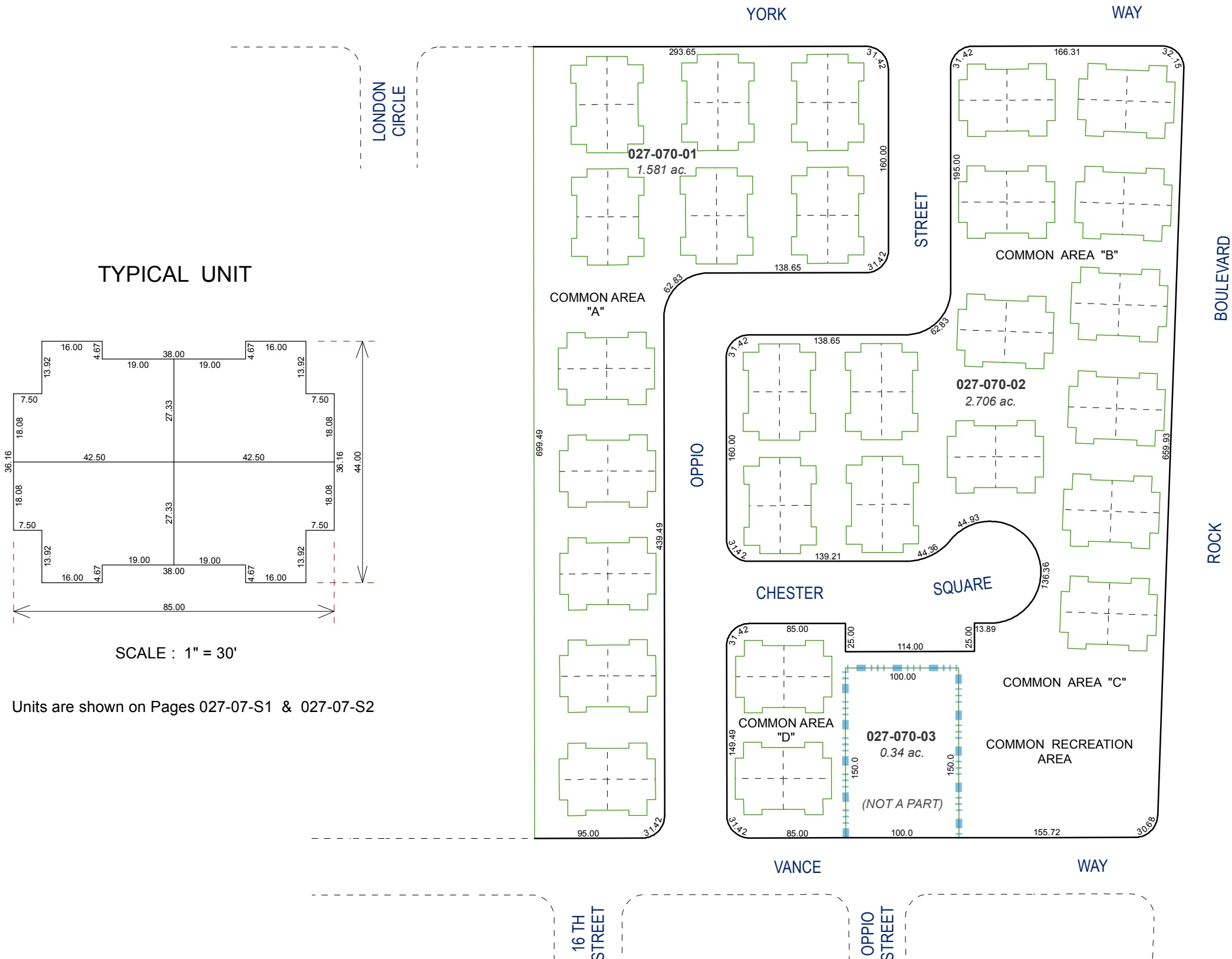


created by: TWT 10/13/2015

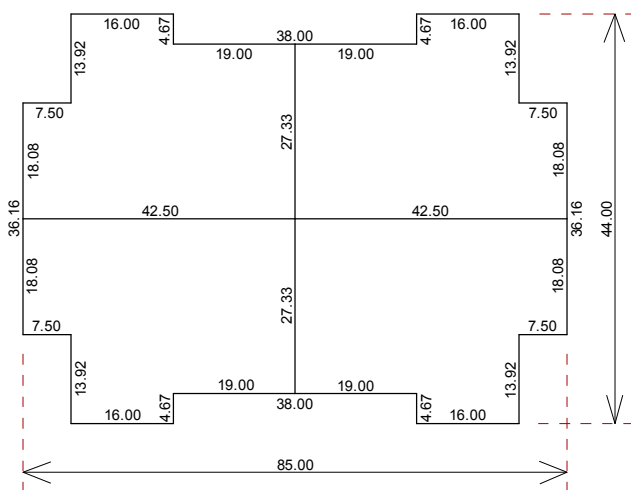
last updated: \_\_\_\_\_

area previously shown on map(s)  
 \_\_\_\_\_

NOTE: This map was prepared for the use of the Washoe County Assessor for assessment and illustrative purposes only. It does not represent a survey of the premises. No liability is assumed as to the sufficiency or accuracy of the data delineated hereon.



**TYPICAL UNIT**



SCALE : 1" = 30'

Units are shown on Pages 027-07-S1 & 027-07-S2