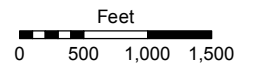
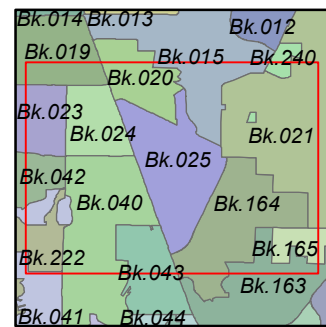
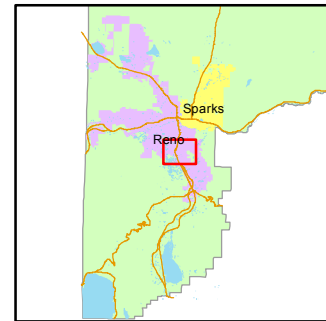


STATE OF NEVADA  
**WASHOE COUNTY**  
**ASSESSOR'S OFFICE**  
 Michael E. Clark, Assessor

1001 East Ninth Street  
 Building D  
 Reno, Nevada 89512  
 (775) 328-2231



1 inch = 1,500 feet



created by: TWT 10/20/2015

last updated: \_\_\_\_\_

NOTE: This map was prepared for the use of the Washoe County Assessor for assessment and illustrative purposes only. It does not represent a survey of the premises. No liability is assumed as to the sufficiency or accuracy of the data delineated herein.

T19N - R19E

T19N - R20E

24 19  
25 30

19 20  
30 29

BOOK 20

BOOK 15

BOOK 24

SEE INDEX PAGE 2

SEE INDEX PAGE 3

25 36

30 29  
31 32

BOOK 21

BOOK 40

SEE INDEX PAGE 4

BOOK 164

36 31  
1 6

T19N - R20E  
T18N - R20E

31 32  
6 5

BOOK 43

T18N - R20E

BOOK 164

KIETZKE LN  
I-580

E PECKHAM LN

S McCARRAN BV

AIRWAY DR

S VIRGINIA ST

LONGLEY LN