

ANNEX. T.M. 3659
ORD. 4969
(Lots 75, 76, 78, 106, 107)

(#248) HOME GARDENS

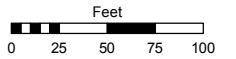
PORTION OF THE NE 1/4 OF SECTION 31
T19N - R20E

Assessor's Map Number

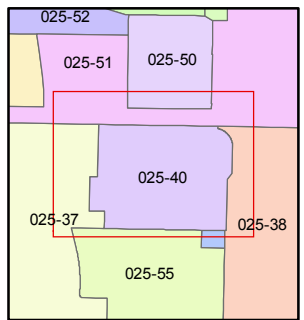
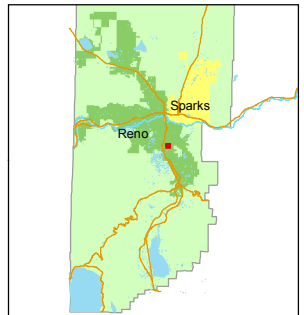
025-40

STATE OF NEVADA
WASHOE COUNTY
ASSESSOR'S OFFICE
Michael E. Clark, Assessor

1001 East Ninth Street
Building D
Reno, Nevada 89512
(775) 328-2231



1 inch = 100 feet



created by: TWT 7/24/2015

last updated: _____

area previously shown on map(s)

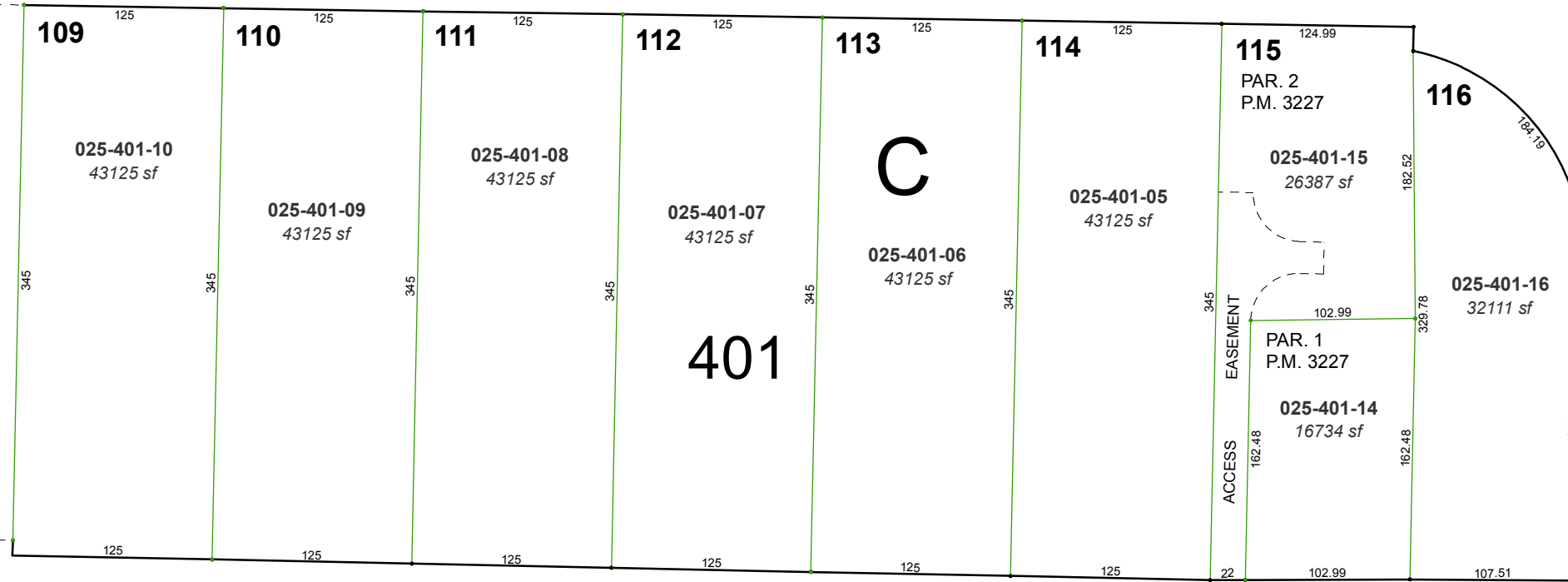
040-11

NOTE: This map was prepared for the use of the Washoe County Assessor for assessment and illustrative purposes only. It does not represent a survey of the premises. No liability is assumed as to the sufficiency or accuracy of the data delineated hereon.

SOUTH

McCARRAN

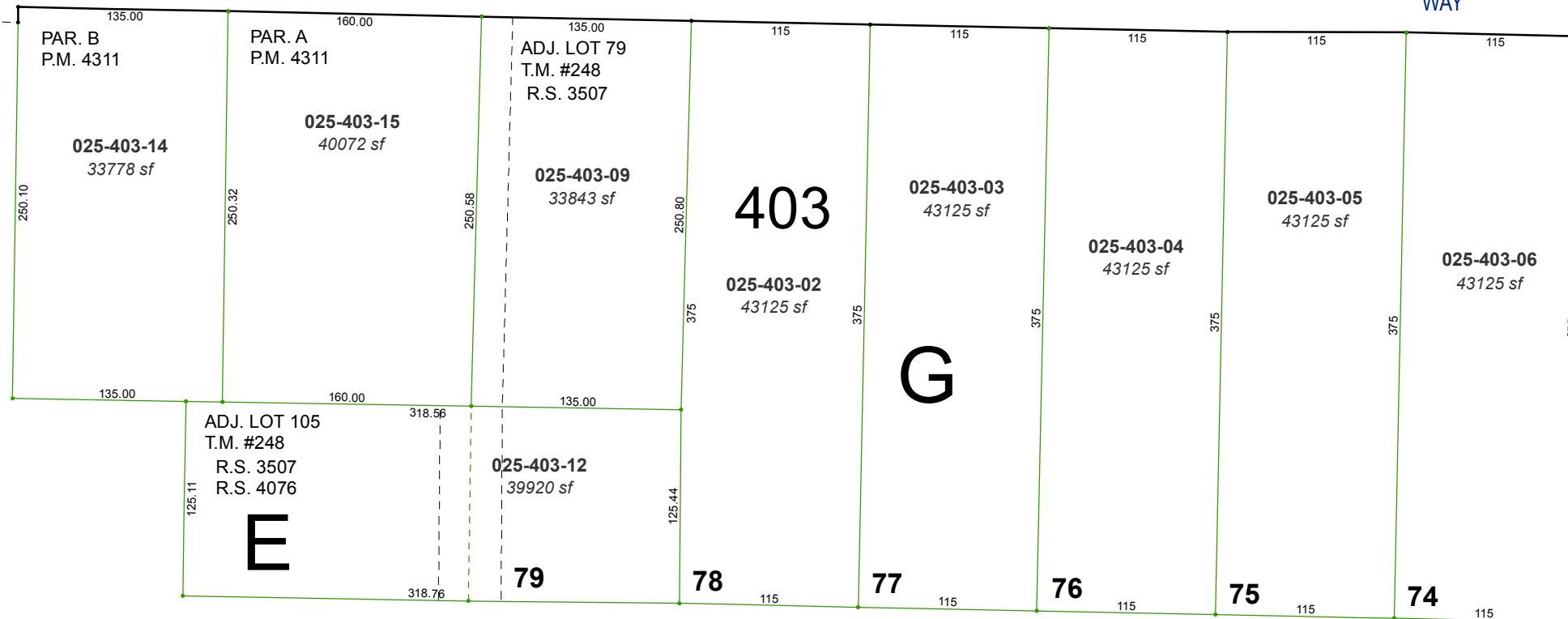
BOULEVARD



DRIVE

MARVEL

WAY



AIRWAY

NEIL ROAD

025-64