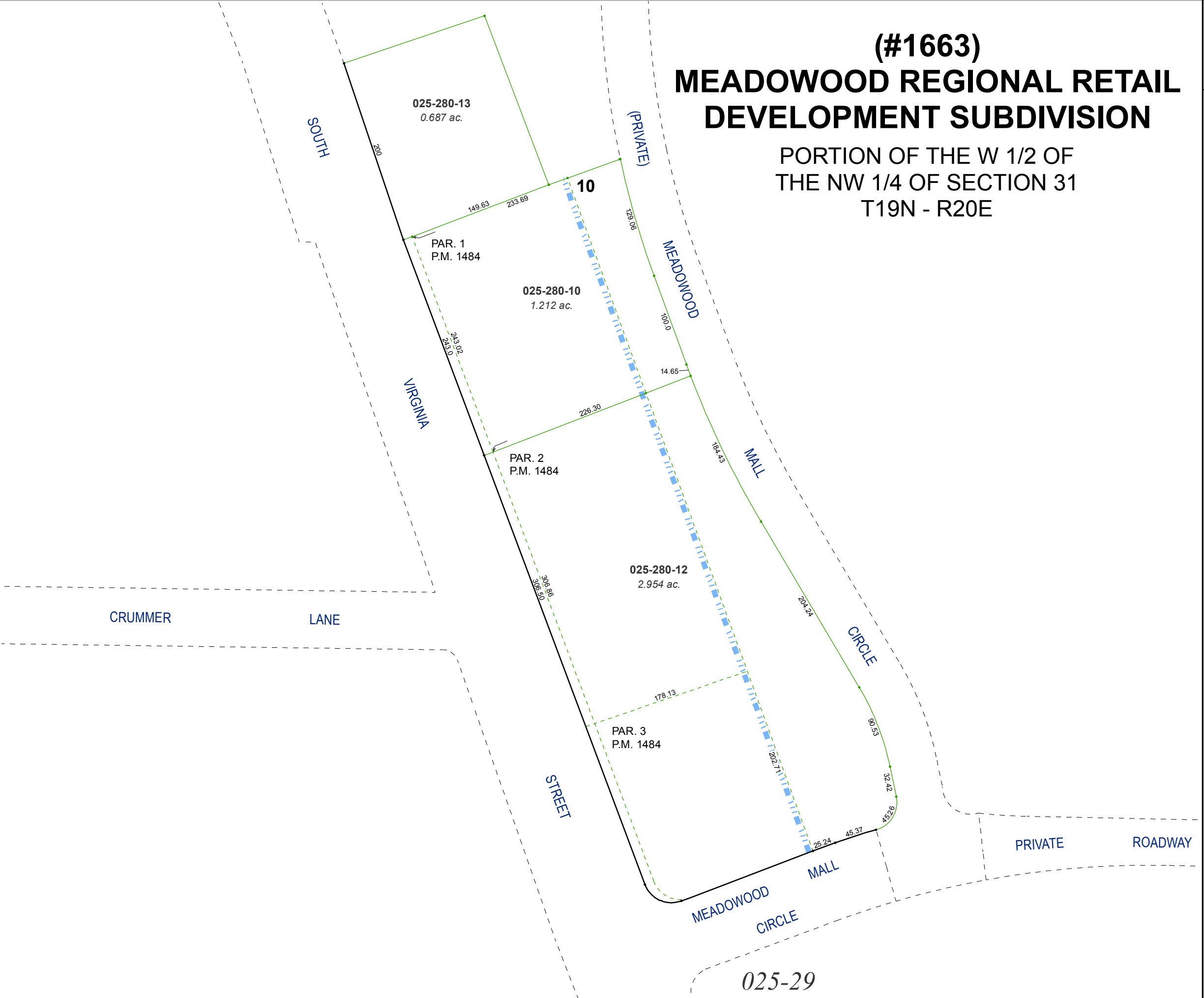


**(#1663)  
MEADOWOOD REGIONAL RETAIL  
DEVELOPMENT SUBDIVISION**

PORTION OF THE W 1/2 OF  
THE NW 1/4 OF SECTION 31  
T19N - R20E

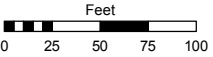


Assessor's Map Number

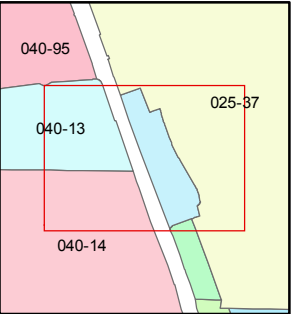
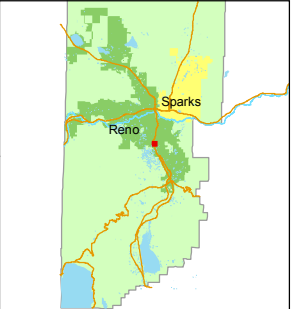
**025-28**

STATE OF NEVADA  
**WASHOE COUNTY**  
ASSESSOR'S OFFICE  
Michael E. Clark, Assessor

1001 East Ninth Street  
Building D  
Reno, Nevada 89512  
(775) 328-2231



1 inch = 100 feet



created by: TWT 7/23/2015

last updated: \_\_\_\_\_

area previously shown on map(s)  
\_\_\_\_\_

NOTE: This map was prepared for the use of the Washoe County Assessor for assessment and illustrative purposes only. It does not represent a survey of the premises. No liability is assumed as to the sufficiency or accuracy of the data delineated herein.