

(#1245) SMITHRIDGE PARK TOWNHOUSES NO. 3 UNIT NO. 5

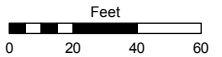
POR SW 1/4 SEC. 30
T19N - R19E

Assessor's Map Number

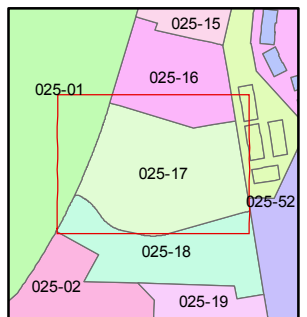
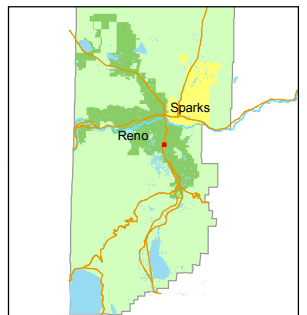
025-17

STATE OF NEVADA
WASHOE COUNTY
ASSESSOR'S OFFICE
Michael E. Clark, Assessor

1001 East Ninth Street
Building D
Reno, Nevada 89512
(775) 328-2231



1 inch = 60 feet



created by: TWT 7/21/2015

last updated: _____

area previously shown on map(s) _____

NOTE: This map was prepared for the use of the Washoe County Assessor for assessment and illustrative purposes only. It does not represent a survey of the premises. No liability is assumed as to the sufficiency or accuracy of the data delineated hereon.

