

# (#1178) SMITHRIDGE GREENS - UNIT NO. 2

A CONDOMINIUM SUBDIVISION

POR. OF S 1/2 SECTION 30, T19N - R20E

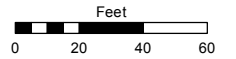
UNITS ONLY

Assessor's Map Number

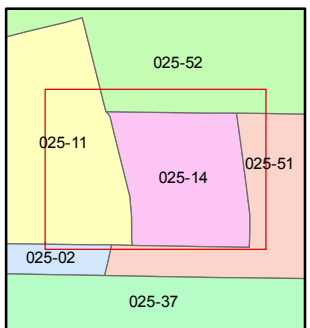
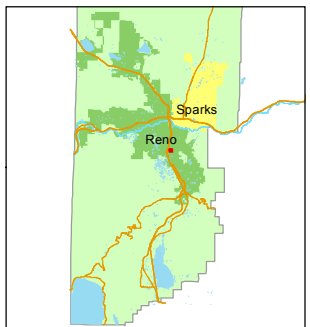
**025-14**

STATE OF NEVADA  
**WASHOE COUNTY**  
 ASSESSOR'S OFFICE  
 Michael E. Clark, Assessor

1001 East Ninth Street  
 Building D  
 Reno, Nevada 89512  
 (775) 328-2231



1 inch = 60 feet

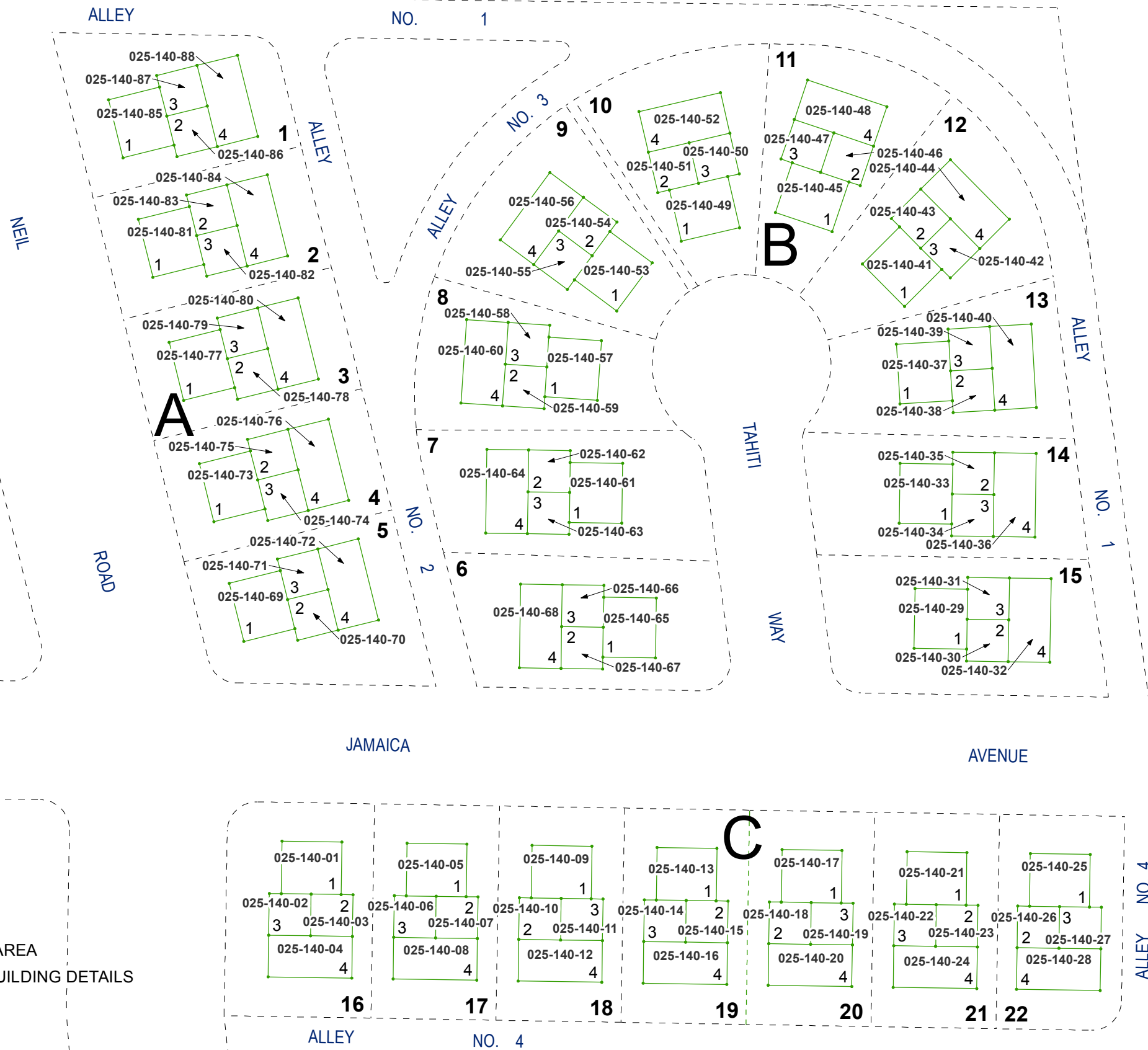


created by: TWT 7/20/2015

last updated: \_\_\_\_\_

area previously shown on map(s) \_\_\_\_\_

NOTE: This map was prepared for the use of the Washoe County Assessor for assessment and illustrative purposes only. It does not represent a survey of the premises. No liability is assumed as to the sufficiency or accuracy of the data delineated herein.



SEE PAGE 025-14-S1 for COMMON AREA  
 SEE PAGE 025-14-S2 for TYPICAL BUILDING DETAILS