

(1152) AMENDED SMITHRIDGE GREENS UNIT NO. 1

A CONDOMINIUM SUBDIVISION

SE 1/4 OF THE SW 1/4 OF SECTION 30
T19N - R20E



COMMON AREA ONLY

1/64 INTEREST EACH IN COMMON AREA "B"
1/4 INTEREST EACH IN COMMON AREA "A"

SEE SHEETS S-1 AND S-2 FOR UNITS

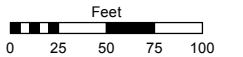
SEE SHEET S-3 FOR TYPICAL UNIT DIAGRAMS
AND COMMON AREA "A" DIAGRAM

Assessor's Map Number

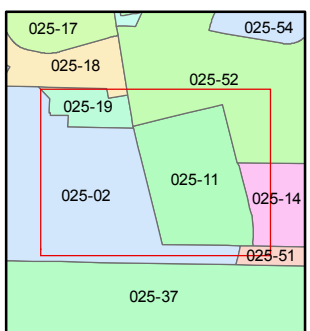
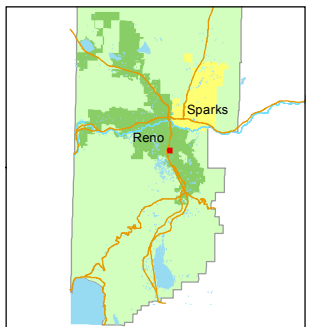
025-11

STATE OF NEVADA
WASHOE COUNTY
ASSESSOR'S OFFICE
Joshua G. Wilson, Assessor

1001 East Ninth Street
Building D
Reno, Nevada 89512
(775) 328-2231



1 inch = 100 feet



created by: CFB 05/07/2014

last updated: _____

area previously shown on map(s) _____

NOTE: This map was prepared for the use of the Washoe County Assessor for assessment and illustrative purposes only. It does not represent a survey of the premises. No liability is assumed as to the sufficiency or accuracy of the data delineated hereon.