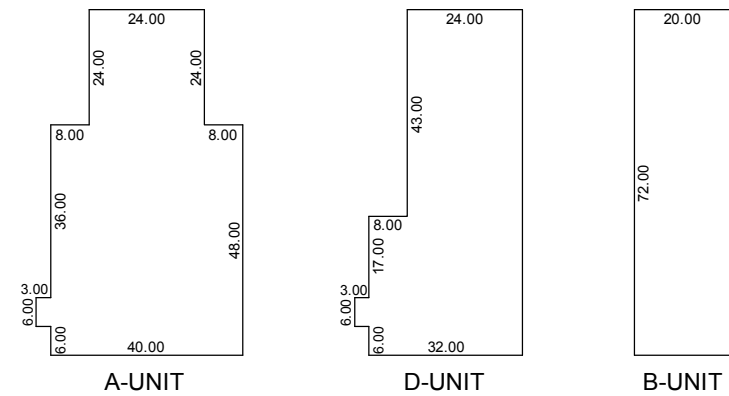
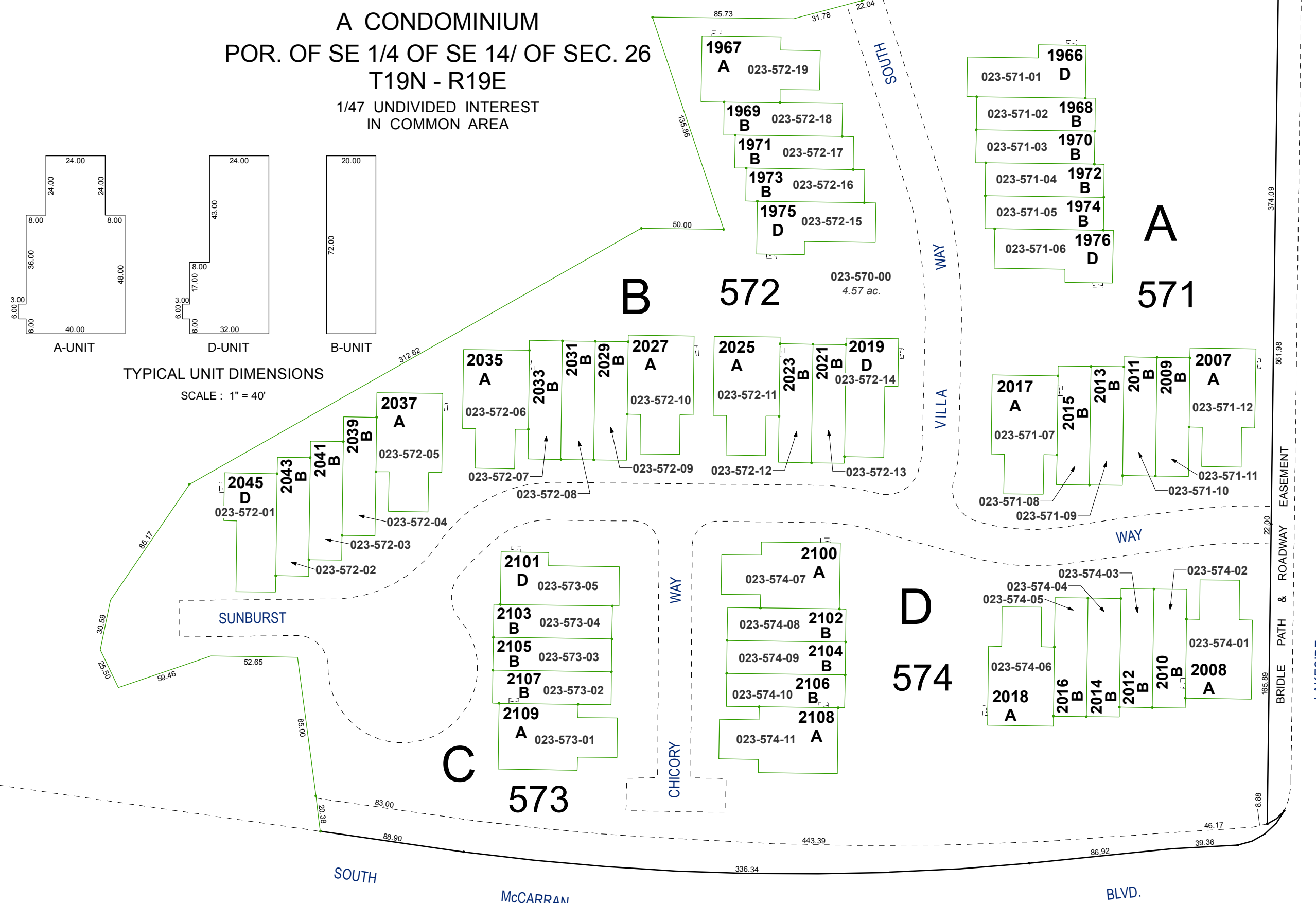


(#1897) AMENDED VILLAS AT LAKERIDGE UNIT FOUR

A CONDOMINIUM
POR. OF SE 1/4 OF SE 14/ OF SEC. 26
T19N - R19E
1/47 UNDIVIDED INTEREST
IN COMMON AREA

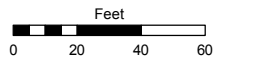


TYPICAL UNIT DIMENSIONS
SCALE: 1" = 40'

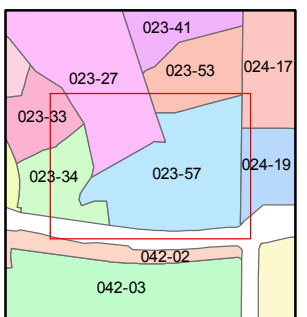
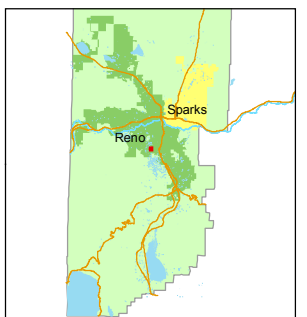


Assessor's Map Number
023-57

STATE OF NEVADA
WASHOE COUNTY
ASSESSOR'S OFFICE
Michael E. Clark, Assessor
1001 East Ninth Street
Building D
Reno, Nevada 89512
(775) 328-2231



1 inch = 60 feet



created by: TWT 6/4/2015

last updated: _____

area previously shown on map(s)

NOTE: This map was prepared for the use of the Washoe County Assessor for assessment and illustrative purposes only. It does not represent a survey of the premises. No liability is assumed as to the sufficiency or accuracy of the data delineated hereon.