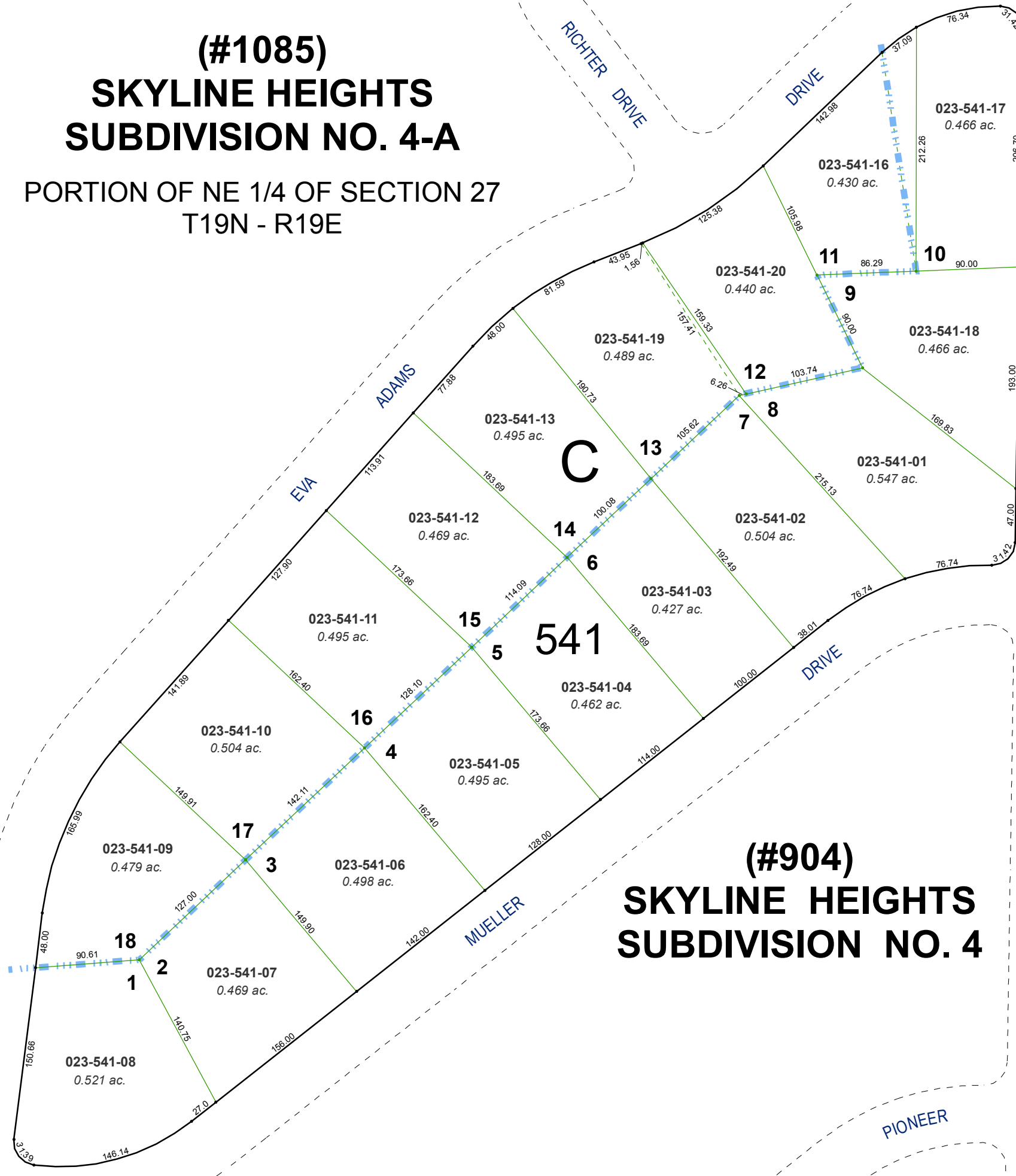
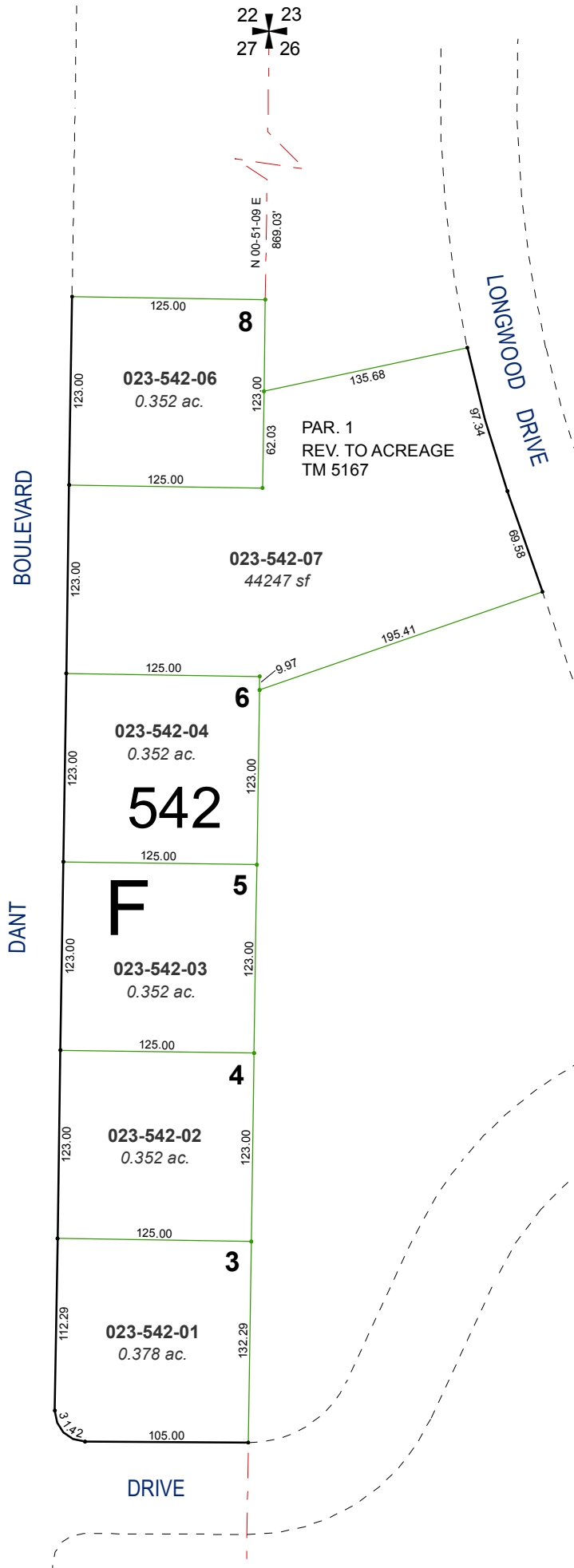


**(#1085)  
SKYLINE HEIGHTS  
SUBDIVISION NO. 4-A**

PORTION OF NE 1/4 OF SECTION 27  
T19N - R19E



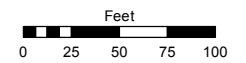
**(#904)  
SKYLINE HEIGHTS  
SUBDIVISION NO. 4**



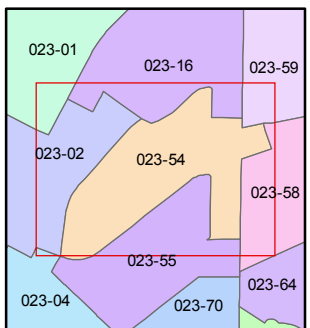
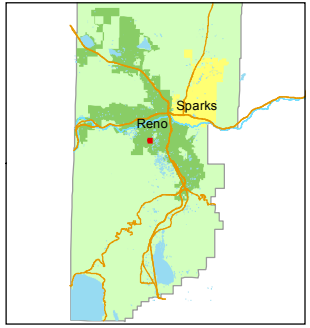
Assessor's Map Number  
**023-54**

STATE OF NEVADA  
**WASHOE COUNTY**  
ASSESSOR'S OFFICE  
Michael E. Clark, Assessor

1001 East Ninth Street  
Building D  
Reno, Nevada 89512  
(775) 328-2231



1 inch = 100 feet



created by: KSB 7/01/2016

last updated: \_\_\_\_\_

area previously shown on map(s) \_\_\_\_\_

NOTE: This map was prepared for the use of the Washoe County Assessor for assessment and illustrative purposes only. It does not represent a survey of the premises. No liability is assumed as to the sufficiency or accuracy of the data delineated hereon.