

(#502)

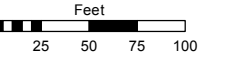
TACCHINO SUBDIVISION  
POR. SW 1/4 SEC. 6 & S 1/2 SEC. 7  
T19N - R20E

Assessor's Map Number

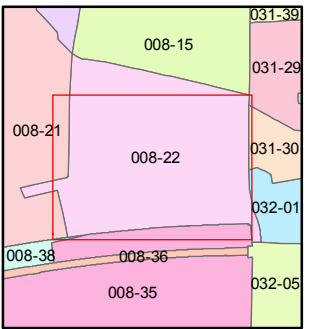
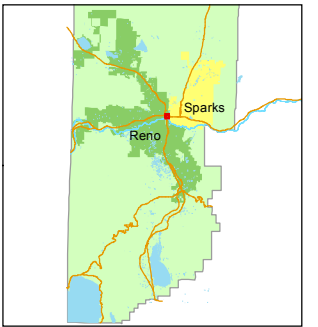
008-22

STATE OF NEVADA  
**WASHOE COUNTY**  
ASSESSOR'S OFFICE  
Michael E. Clark, Assessor

1001 East Ninth Street  
Building D  
Reno, Nevada 89512  
(775) 328-2231



1 inch = 100 feet

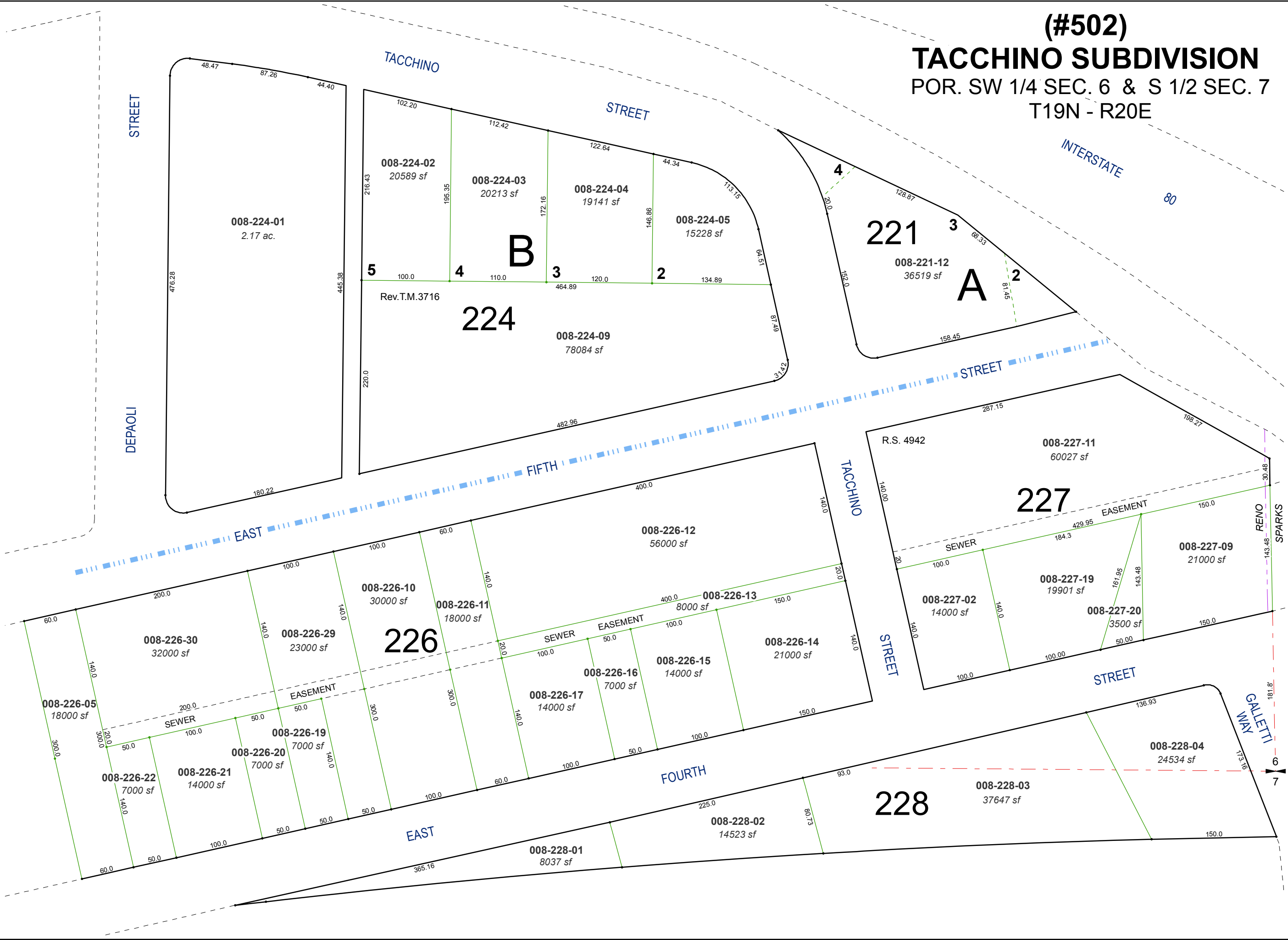


created by: TWT 10/15/2012

last updated: CFB 06/04/2015

area previously shown on map(s)

NOTE: This map was prepared for the use of the Washoe County Assessor for assessment and illustrative purposes only. It does not represent a survey of the premises. No liability is assumed as to the sufficiency or accuracy of the data delineated hereon.



**B**

**A**

**226**

**227**

**228**

**224**

**227**

**228**