

(#1974) AMENDED PLAT OF DONNER CREEK VILLAGE

A CONDOMINIUM
2nd LEVEL OWNERSHIP

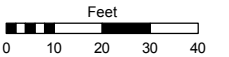
POR. NW 1/4 SEC. 33
T19N - R20E

Assessor's Map Number

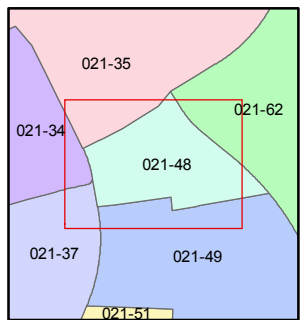
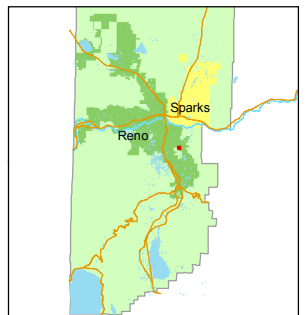
021-48-S1

STATE OF NEVADA
WASHOE COUNTY
ASSESSOR'S OFFICE
Michael E. Clark, Assessor

1001 East Ninth Street
Building D
Reno, Nevada 89512
(775) 328-2231



1 inch = 40 feet

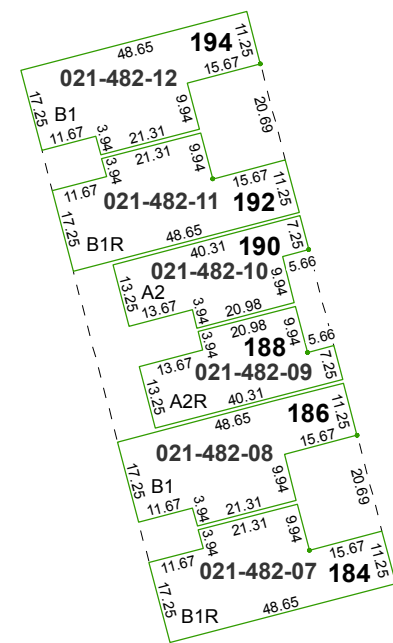


created by: TWT 2/6/2015

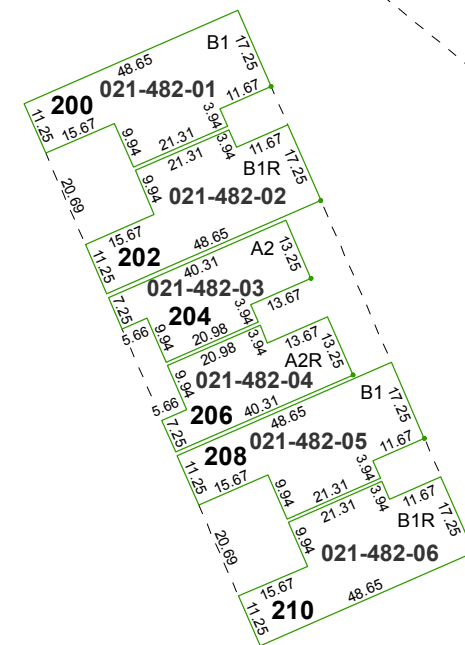
last updated: _____

area previously shown on map(s)

NOTE: This map was prepared for the use of the Washoe County Assessor for assessment and illustrative purposes only. It does not represent a survey of the premises. No liability is assumed as to the sufficiency or accuracy of the data delineated hereon.



PHASE 6
A 1/44 INTEREST EACH
IN COMMON AREA



AMENDED PHASE 5
A 1/60 INTEREST EACH
IN COMMON AREA

482
A

REGGIE

ROAD

MATCH

RANCHITA
WAY

DRIVE