

(#1578) DONNER SPRINGS SUBDIVISION UNIT NO. 2-B

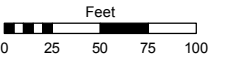
PORTIONS OF THE WEST 1/2 OF SECTION 28 & THE EAST 1/2 OF SECTION 29 T19N - R20E

Assessor's Map Number

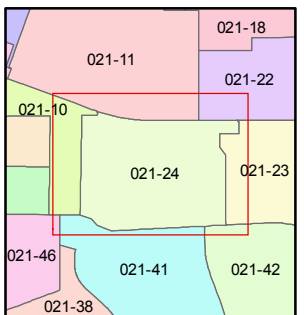
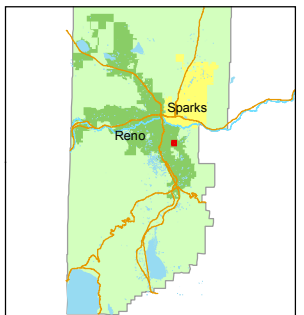
021-24

STATE OF NEVADA
WASHOE COUNTY
ASSESSOR'S OFFICE
 Michael E. Clark, Assessor

1001 East Ninth Street
 Building D
 Reno, Nevada 89512
 (775) 328-2231



1 inch = 100 feet

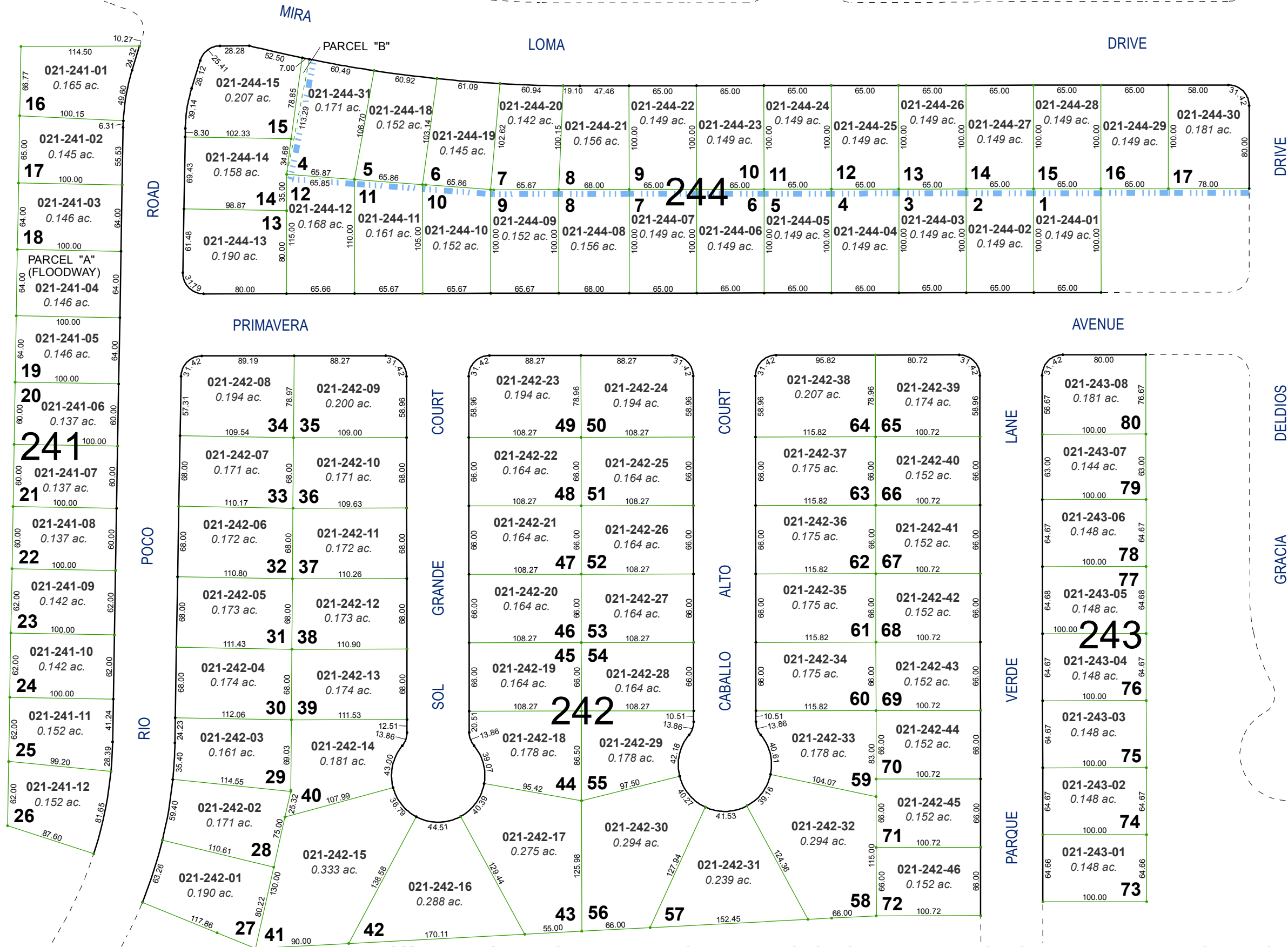


created by: TWT 1/7/2015

last updated: _____

area previously shown on map(s) _____

NOTE: This map was prepared for the use of the Washoe County Assessor for assessment and illustrative purposes only. It does not represent a survey of the premises. No liability is assumed as to the sufficiency or accuracy of the data delineated hereon.



(#1613) DONNER SPRINGS SUBDIVISION UNIT NO. 2C-1