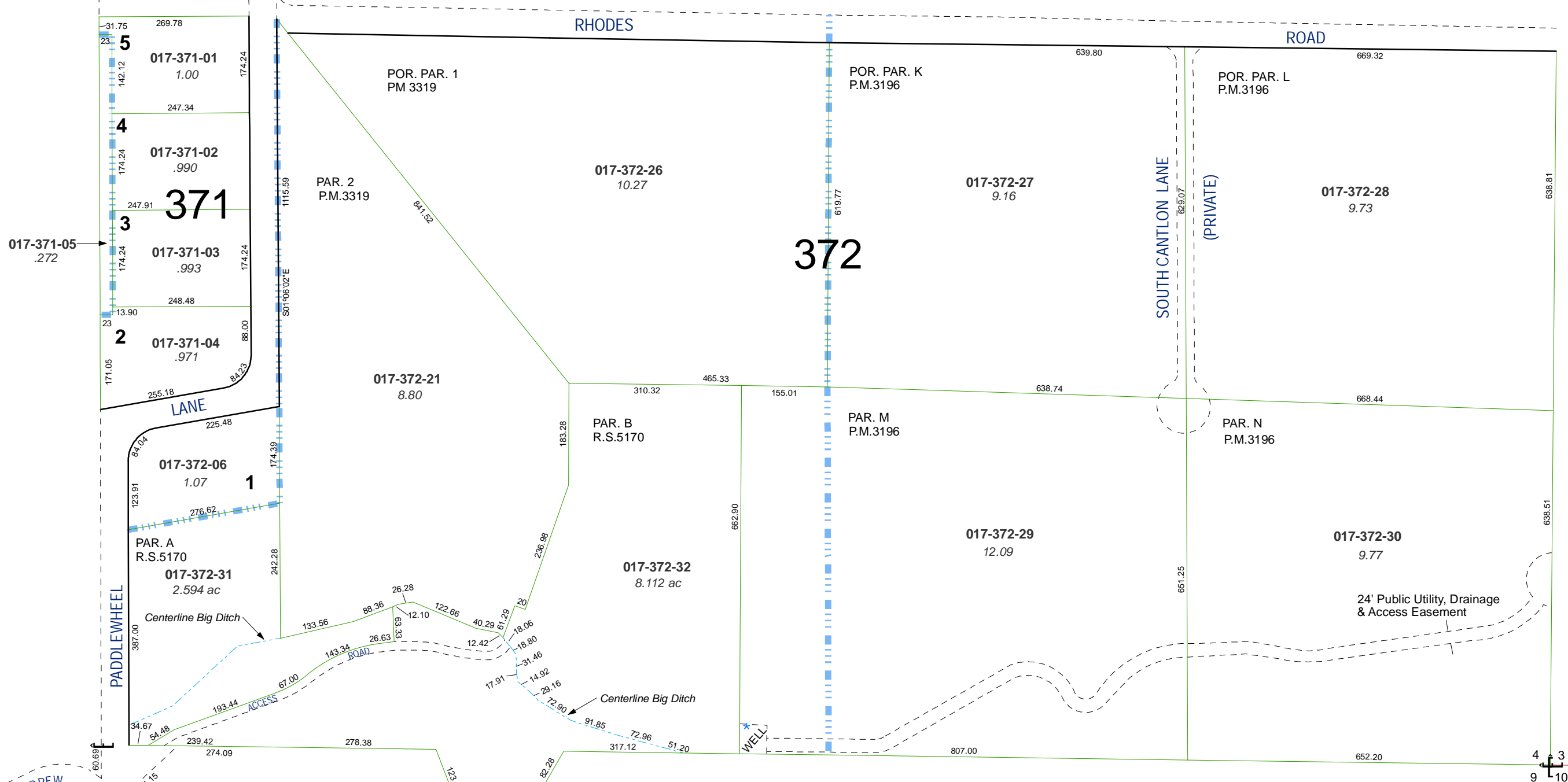


**(#815)
CUTLER SUBDIVISION**

MAP OF DIVISION INTO LARGE PARCELS # 158

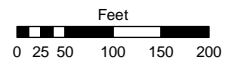


**THE S 1/2 OF THE SE 1/4 SECTION 4
& PORTION OF THE NE 1/4 SECTION 9
T17N – R20E**

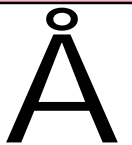
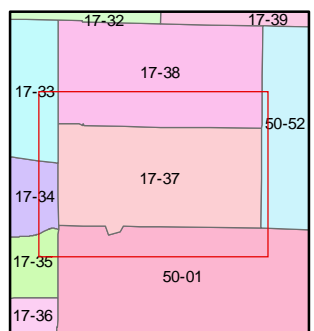
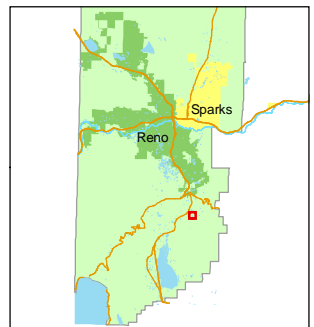
Assessor's Map Number
017-37

STATE OF NEVADA
WASHOE COUNTY
ASSESSOR'S OFFICE
Joshua G. Wilson, Assessor

1001 East Ninth Street
Building D
Reno, Nevada 89512
(775) 328-2231



1 inch = 200 feet



created by: CFB 7/08/2009

last updated: _____

area previously shown on map(s)

NOTE: This map was prepared for the use of the Washoe County Assessor for assessment and illustrative purposes only. It does not represent a survey of the premises. No liability is assumed as to the sufficiency or accuracy of the data delineated hereon.