

OLD
U.S. 395

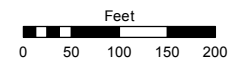
PORTIONS OF THE SW 1/4 OF SECTION 4 & THE NW 1/4 OF SECTION 9 T17N - R20E

Assessor's Map Number

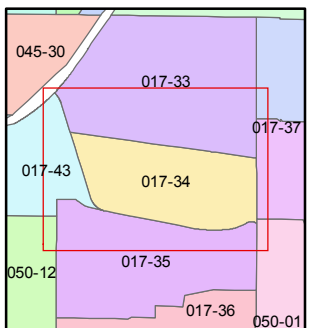
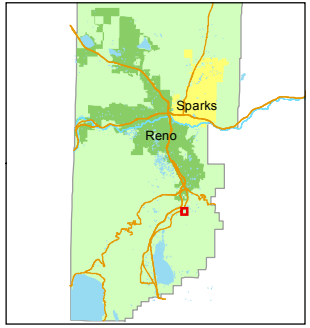
017-34

STATE OF NEVADA
WASHOE COUNTY
ASSESSOR'S OFFICE
Michael E. Clark, Assessor

1001 East Ninth Street
Building D
Reno, Nevada 89512
(775) 328-2231



1 inch = 200 feet

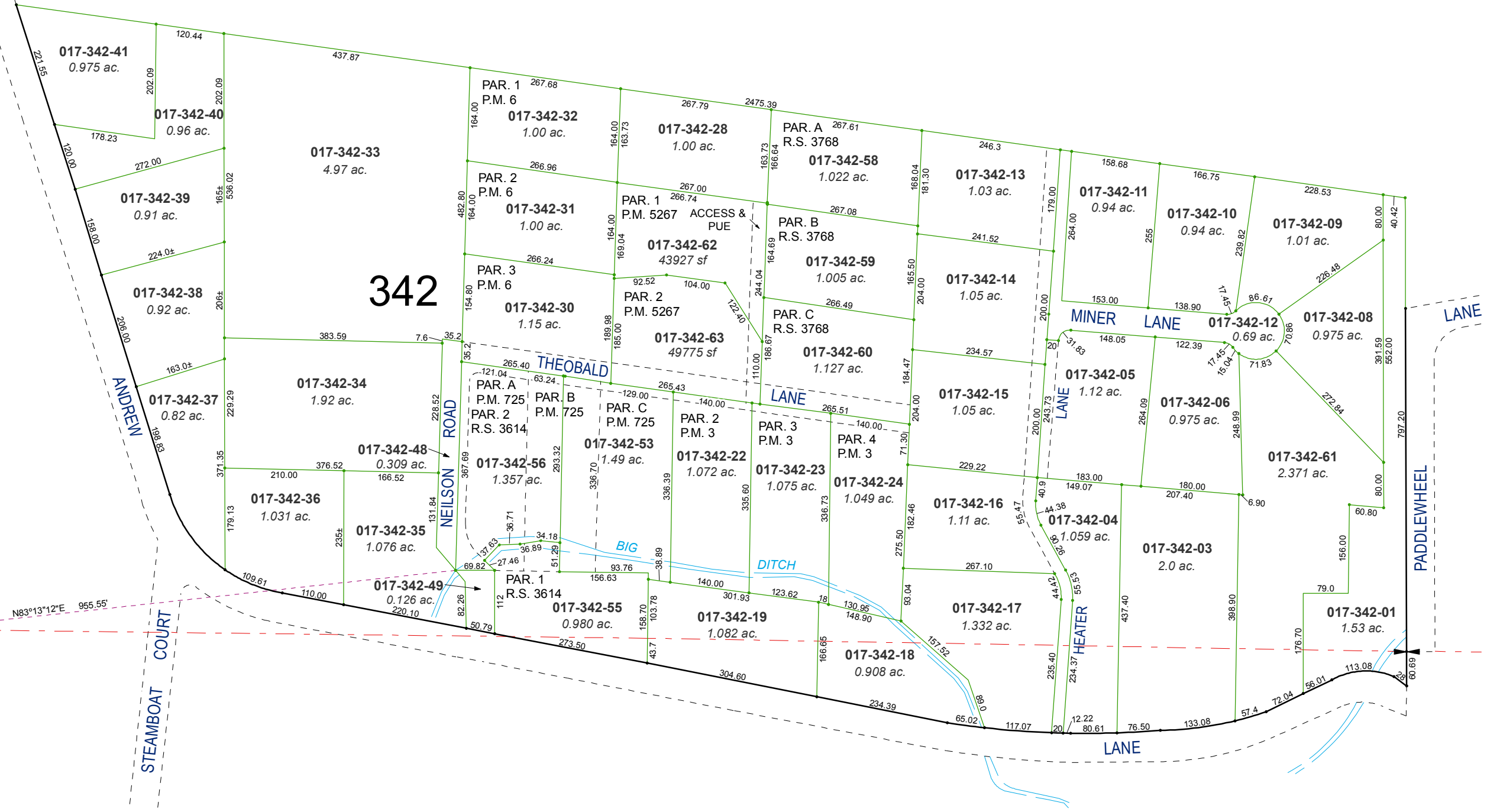


created by: TWT 6/26/2014

last updated: JMO 12/16/16 JMO 5/3/17

area previously shown on map(s)

NOTE: This map was prepared for the use of the Washoe County Assessor for assessment and illustrative purposes only. It does not represent a survey of the premises. No liability is assumed as to the sufficiency or accuracy of the data delineated hereon.



342

5 4
8 9

N83°13'12"E 955.55'