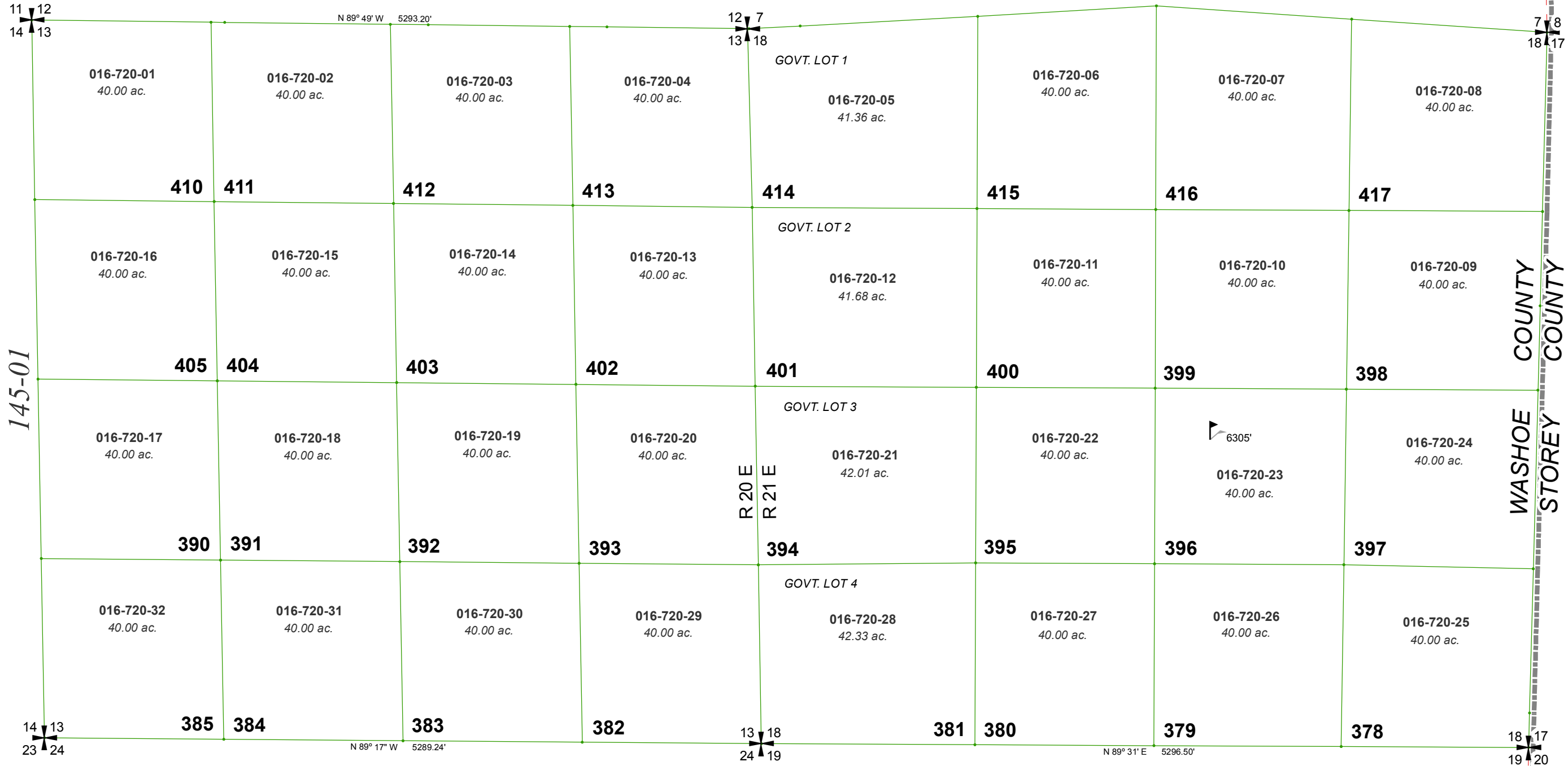


SECTION 13, T18N - R20E & SECTION 18, T18N - R21E

AMENDED DIVISION OF LAND MAP NO. 25, DOC. #493440

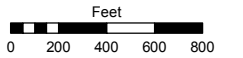


Assessor's Map Number

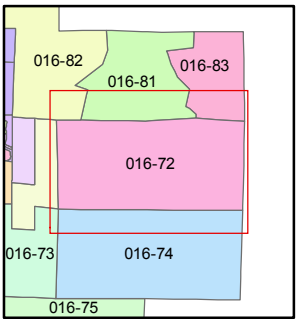
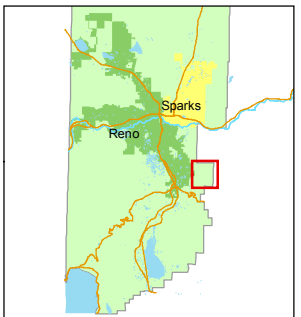
016-72

STATE OF NEVADA
WASHOE COUNTY
 ASSESSOR'S OFFICE
 Joshua G. Wilson, Assessor

1001 East Ninth Street
 Building D
 Reno, Nevada 89512
 (775) 328-2231



1 inch = 800 feet



created by: TWT3/26/2014

last updated: _____

area previously shown on map(s)

NOTE: This map was prepared for the use of the Washoe County Assessor for assessment and illustrative purposes only. It does not represent a survey of the premises. No liability is assumed as to the sufficiency or accuracy of the data delineated hereon.