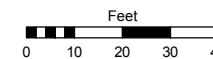


Assessor's Map Number

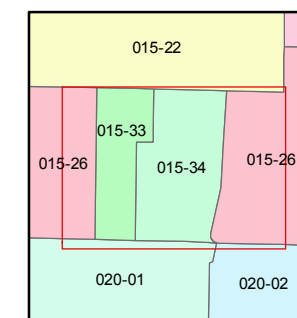
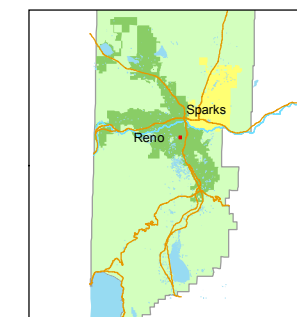
**015-34-S1**

STATE OF NEVADA  
**WASHOE COUNTY**  
ASSESSOR'S OFFICE  
Joshua G. Wilson, Assessor

1001 East Ninth Street  
Building D  
Reno, Nevada 89512  
(775) 328-2231



1 inch = 40 feet



created by: TWT 3/12/2014

last updated: \_\_\_\_\_

area previously shown on map(s) \_\_\_\_\_

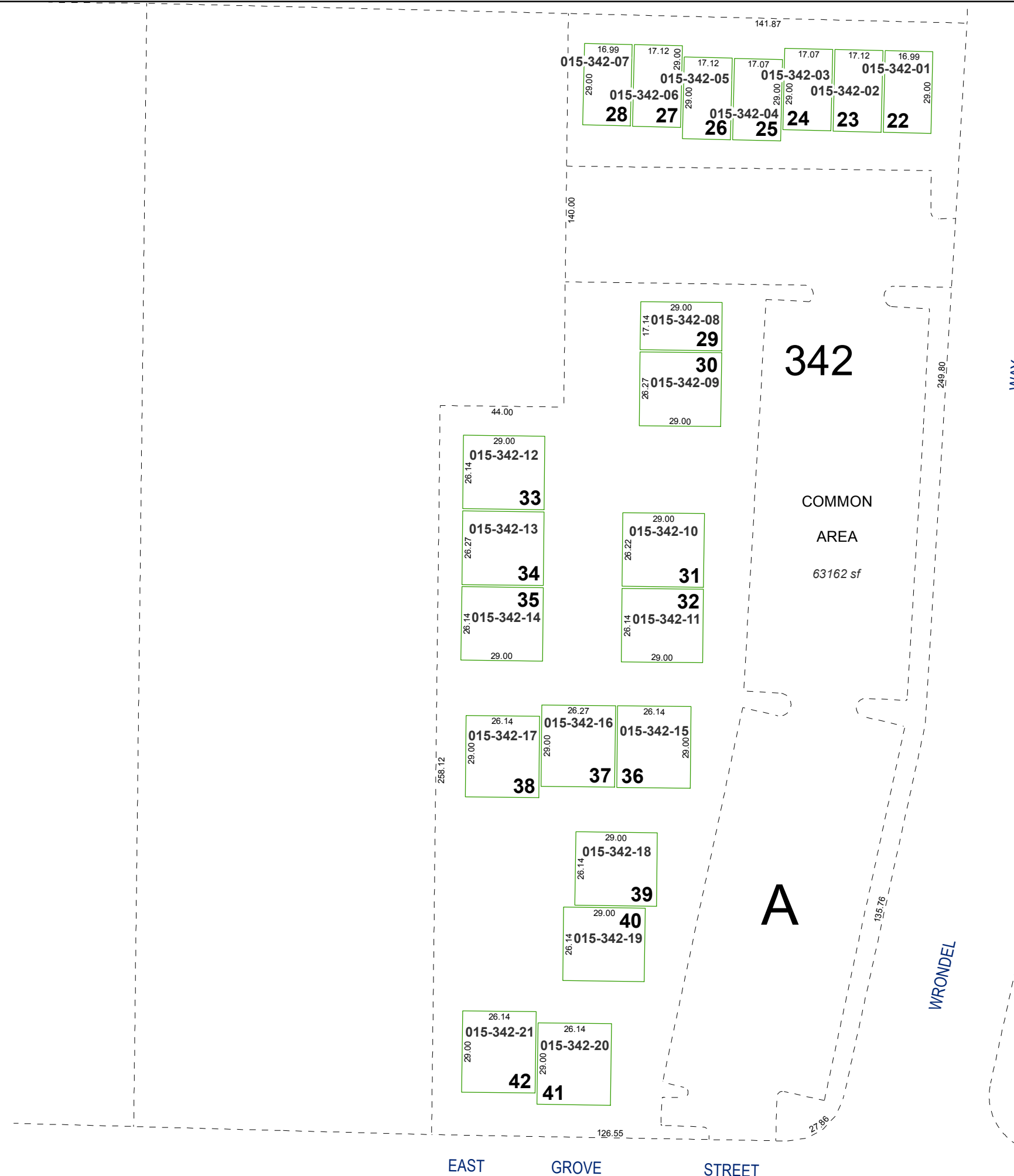
NOTE: This map was prepared for the use of the Washoe County Assessor for assessment and illustrative purposes only. It does not represent a survey of the premises. No liability is assumed as to the sufficiency or accuracy of the data delineated hereon.

# (#2204) KARA MIA CONDOMINIUMS PHASE 2

## SECOND FLOOR

### A PORTION OF THE NE 1/4 OF SECTION 24, T19N - R19E

#### TO EACH AN UNDIVIDED 1/42nd INTEREST IN COMMON AREA



**342**

COMMON  
AREA  
63162 sf

**A**

EAST GROVE STREET

WAY

WRONDEL