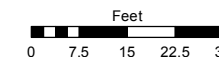
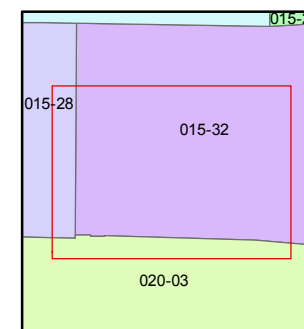
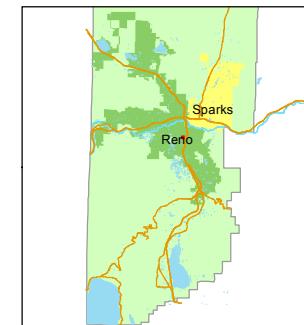


STATE OF NEVADA
WASHOE COUNTY
ASSESSOR'S OFFICE
Michael E. Clark, Assessor

1001 East Ninth Street
Building D
Reno, Nevada 89512
(775) 328-2231



1 inch = 30 feet



created by: TWT 03/11/2011

last updated: SR 12/20/16

area previously shown on map(s)

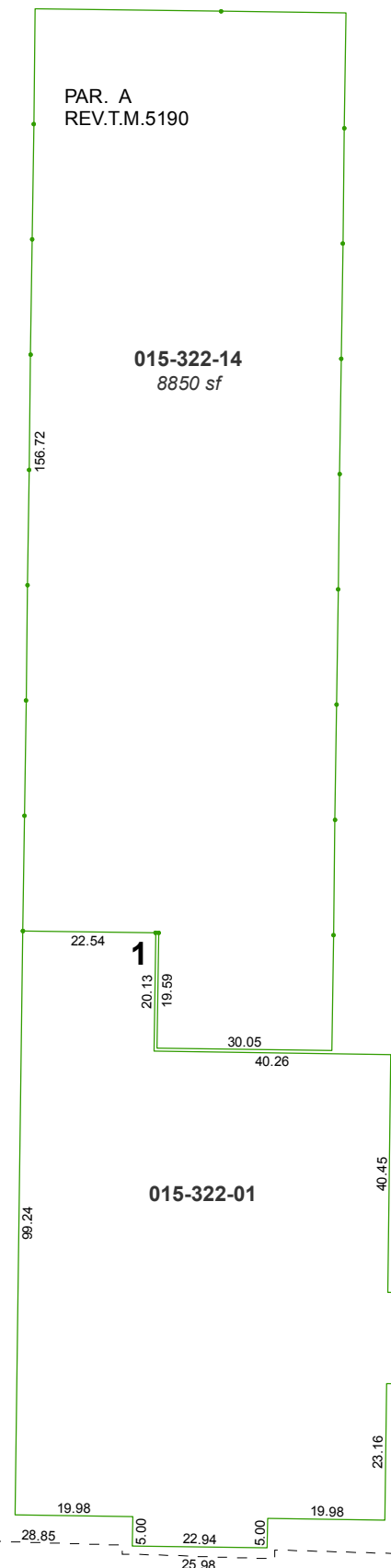
015-28 015-32-S1

NOTE: This map was prepared for the use of the Washoe County Assessor for assessment and illustrative purposes only. It does not represent a survey of the premises. No liability is assumed as to the sufficiency or accuracy of the data delineated hereon.

(#2039) FRANKTOWN CORNERS A COMMERCIAL CONDOMINIUM

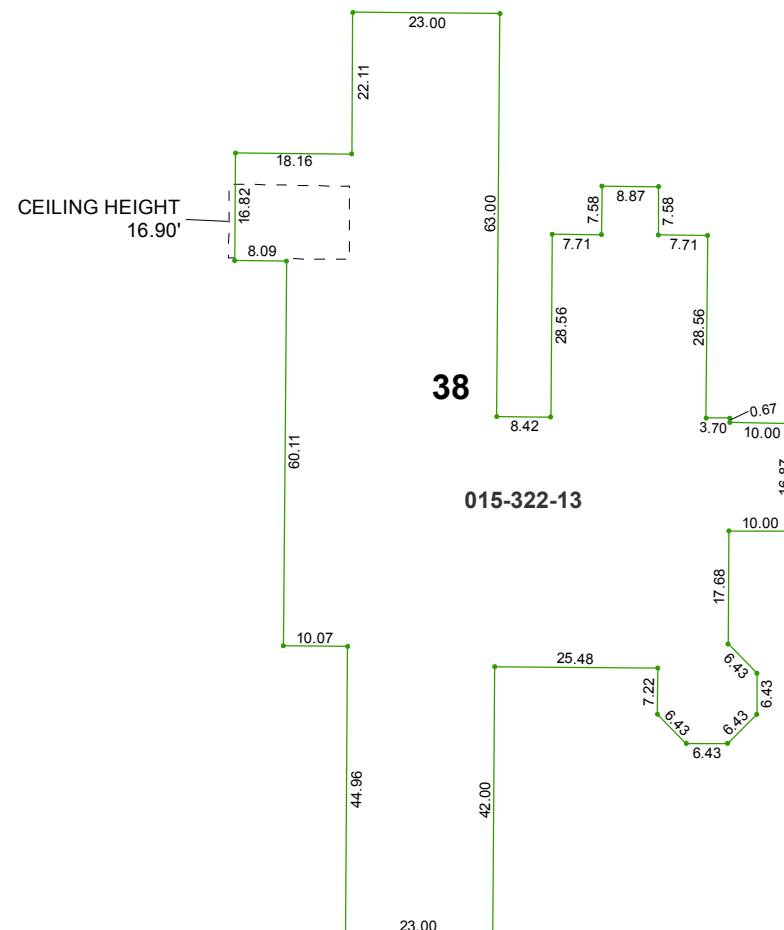
PAR. A
REV.T.M.5190

015-322-14
8850 sf



COMMON AREA

322



CEILING HEIGHT
16.90'

38

015-322-13

RESTRICTED COMMON
AREA

KIETZKE LANE

EAST GROVE STREET