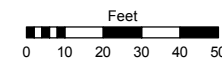


Assessor's Map Number

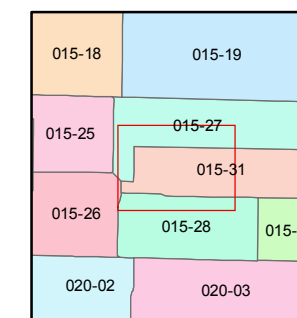
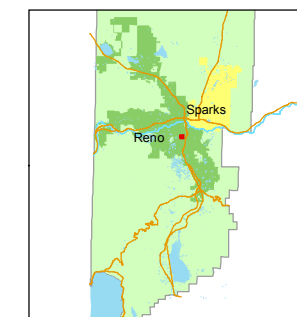
**015-31-S3**

STATE OF NEVADA  
**WASHOE COUNTY**  
ASSESSOR'S OFFICE  
Joshua G. Wilson, Assessor

1001 East Ninth Street  
Building D  
Reno, Nevada 89512  
(775) 328-2231



1 inch = 50 feet



created by: TWT 3/10/2014

last updated: \_\_\_\_\_

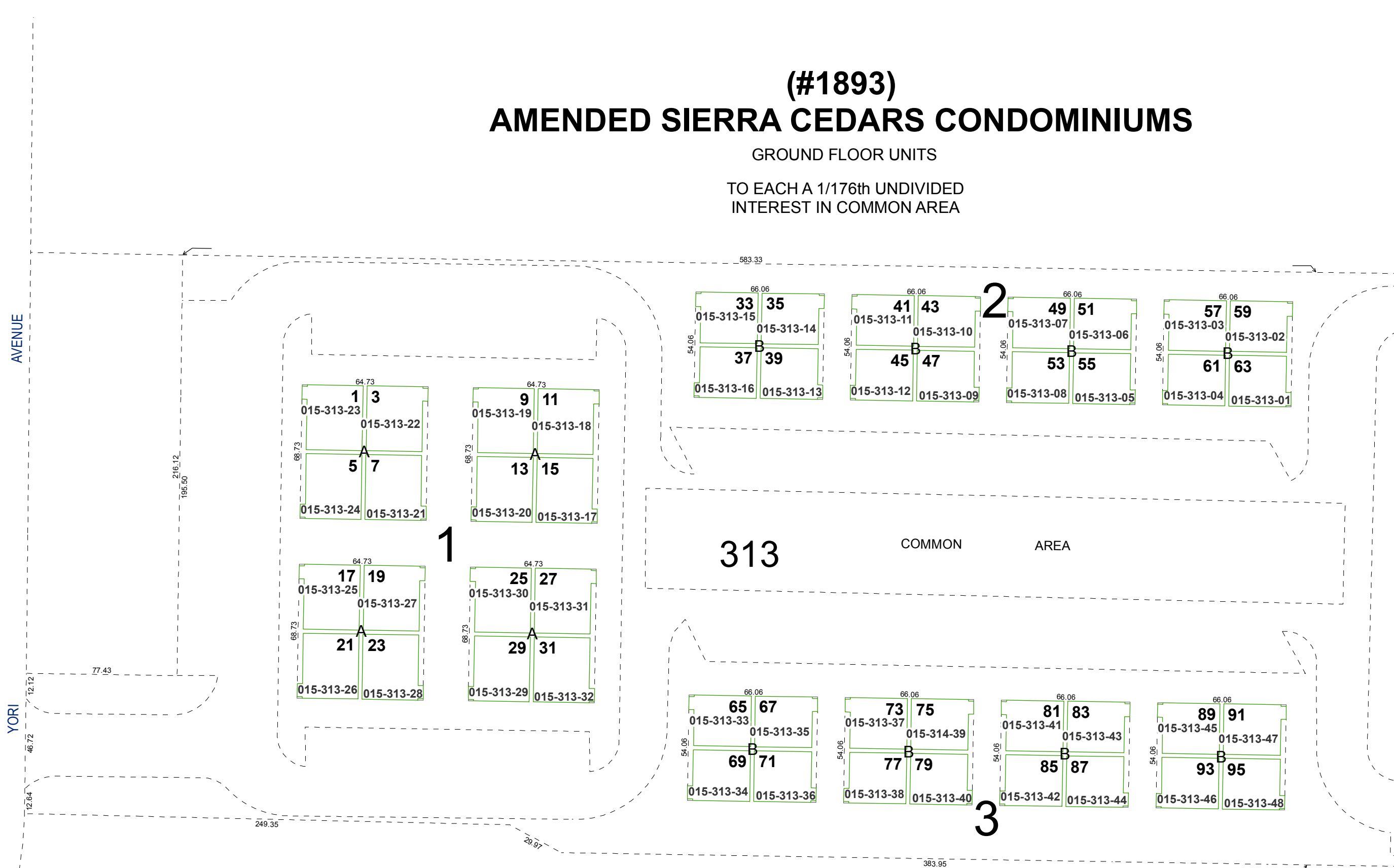
area previously shown on map(s) \_\_\_\_\_

NOTE: This map was prepared for the use of the Washoe County Assessor for assessment and illustrative purposes only. It does not represent a survey of the premises. No liability is assumed as to the sufficiency or accuracy of the data delineated hereon.

# (#1893) AMENDED SIERRA CEDARS CONDOMINIUMS

GROUND FLOOR UNITS

TO EACH A 1/176th UNDIVIDED  
INTEREST IN COMMON AREA



AVENUE

YORI

313 COMMON AREA

1

2

3

216.12  
195.50

77.43

12.12

46.72

12.64

249.35

29.97

583.33

66.06

54.06

54.06

54.06

54.06

68.73

68.73

68.73

68.73

54.06

54.06

54.06

54.06

383.95