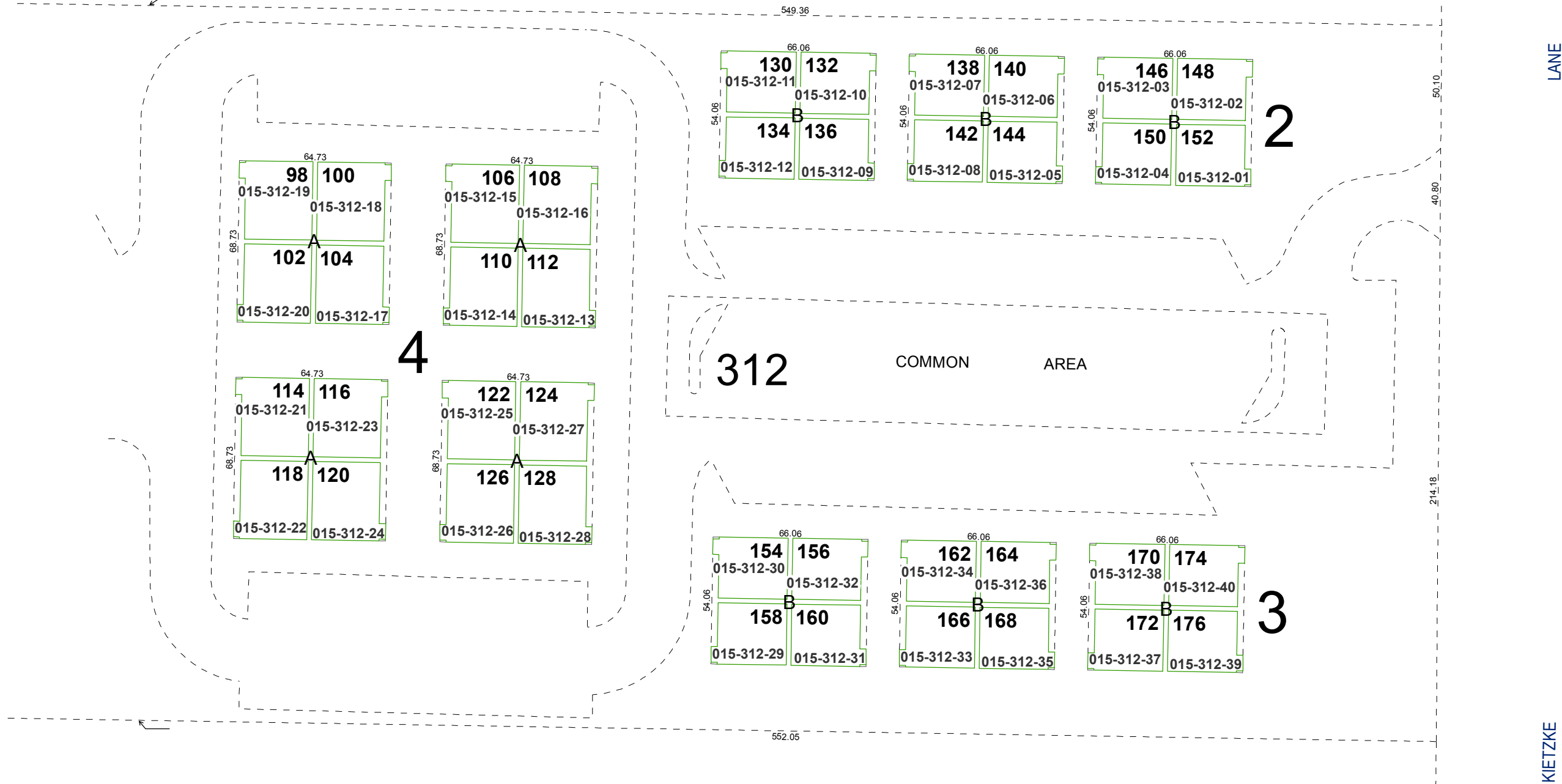


(#1893) AMENDED SIERRA CEDARS CONDOMINIUMS

SECOND FLOOR UNITS

TO EACH A 1/176th UNDIVIDED
INTEREST IN COMMON AREA

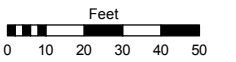


Assessor's Map Number

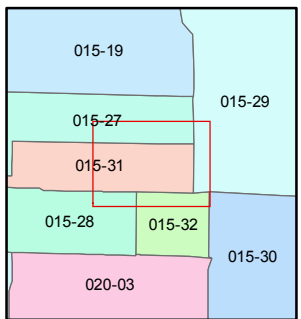
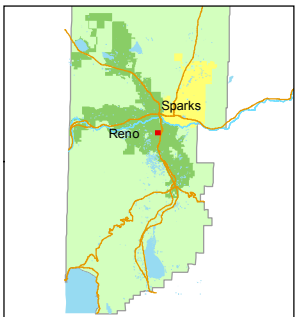
015-31-S2

STATE OF NEVADA
WASHOE COUNTY
ASSESSOR'S OFFICE
Joshua G. Wilson, Assessor

1001 East Ninth Street
Building D
Reno, Nevada 89512
(775) 328-2231



1 inch = 50 feet



created by: TWT 3/10/2014

last updated: _____

area previously shown on map(s) _____

NOTE: This map was prepared for the use of the Washoe County Assessor for assessment and illustrative purposes only. It does not represent a survey of the premises. No liability is assumed as to the sufficiency or accuracy of the data delineated hereon.