

PORTION OF THE NE 1/4 OF SECTION 24  
T19N - R19E

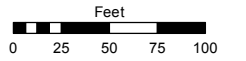
**(#814)**  
**GOLDEN TERRACE  
SUBDIVISION**

**RECORD OF SURVEY #29  
HILLBRAE TRACT (UNOFFICIAL)**

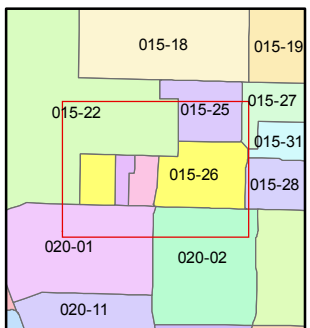
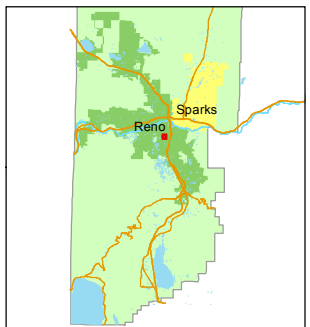
Assessor's Map Number  
**015-26**

STATE OF NEVADA  
**WASHOE COUNTY**  
ASSESSOR'S OFFICE  
Michael E. Clark, Assessor

1001 East Ninth Street  
Building D  
Reno, Nevada 89512  
(775) 328-2231



1 inch = 100 feet



created by: TWT 3/05/2014

last updated: KSB 7/03/17

area previously shown on map(s)

NOTE: This map was prepared for the use of the Washoe County Assessor for assessment and illustrative purposes only. It does not represent a survey of the premises. No liability is assumed as to the sufficiency or accuracy of the data delineated hereon.

