

PORTION OF THE SE 1/4 OF SECTION 14  
T19N - R19E

# (#256) HAMLIN SUBDIVISION

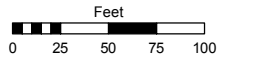
# (#456) SHANGRI-LA SUBDIVISION

Assessor's Map Number

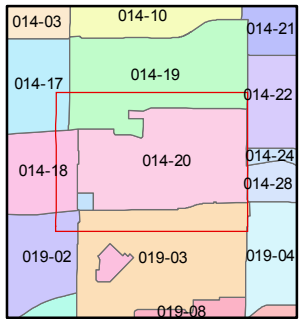
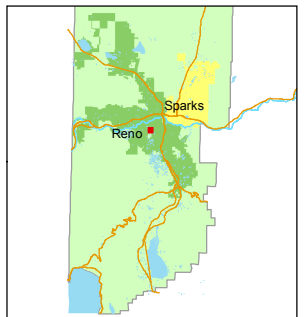
## 014-20

STATE OF NEVADA  
**WASHOE COUNTY**  
ASSESSOR'S OFFICE  
Joshua G. Wilson, Assessor

1001 East Ninth Street  
Building D  
Reno, Nevada 89512  
(775) 328-2231



1 inch = 100 feet

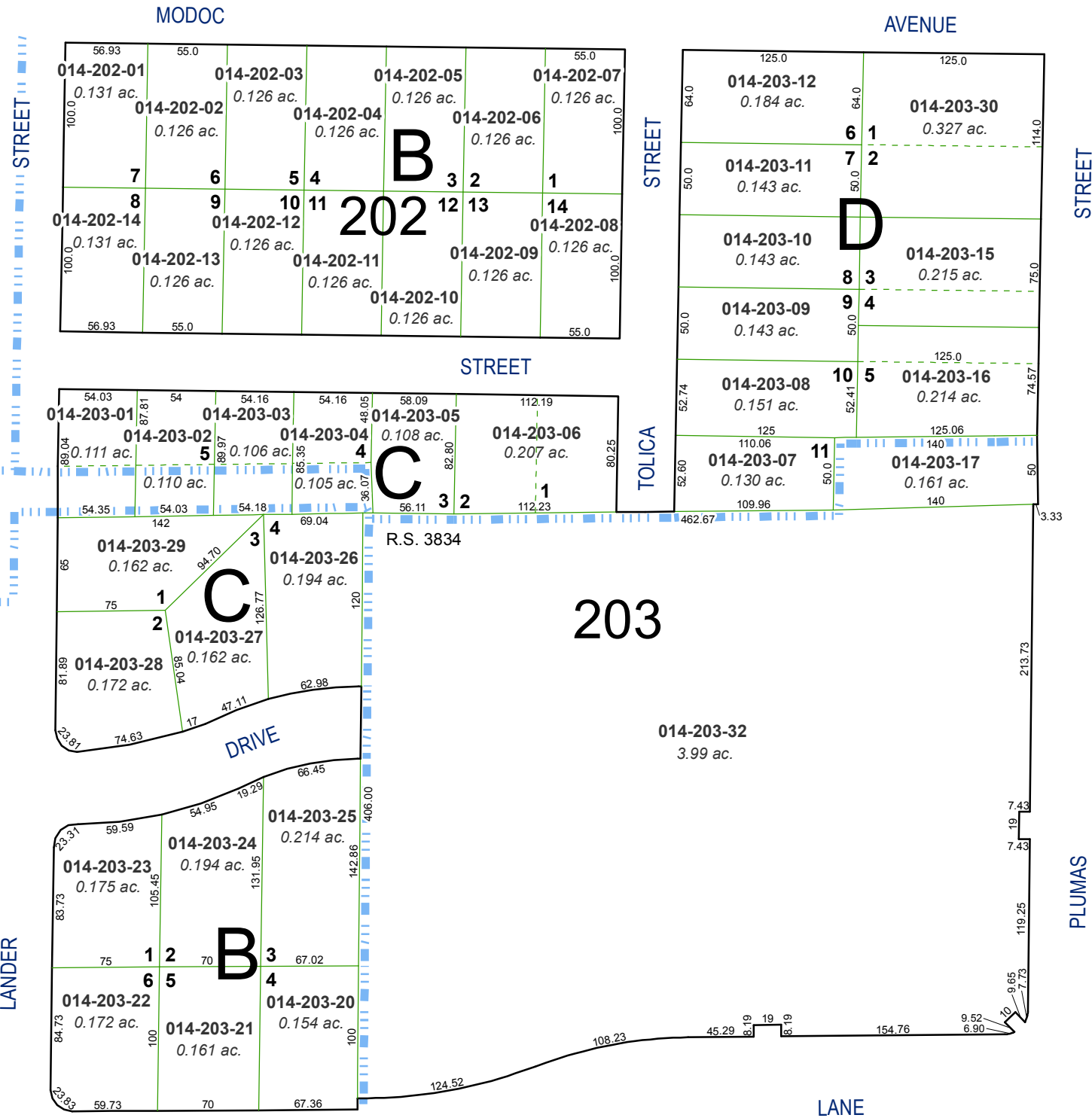
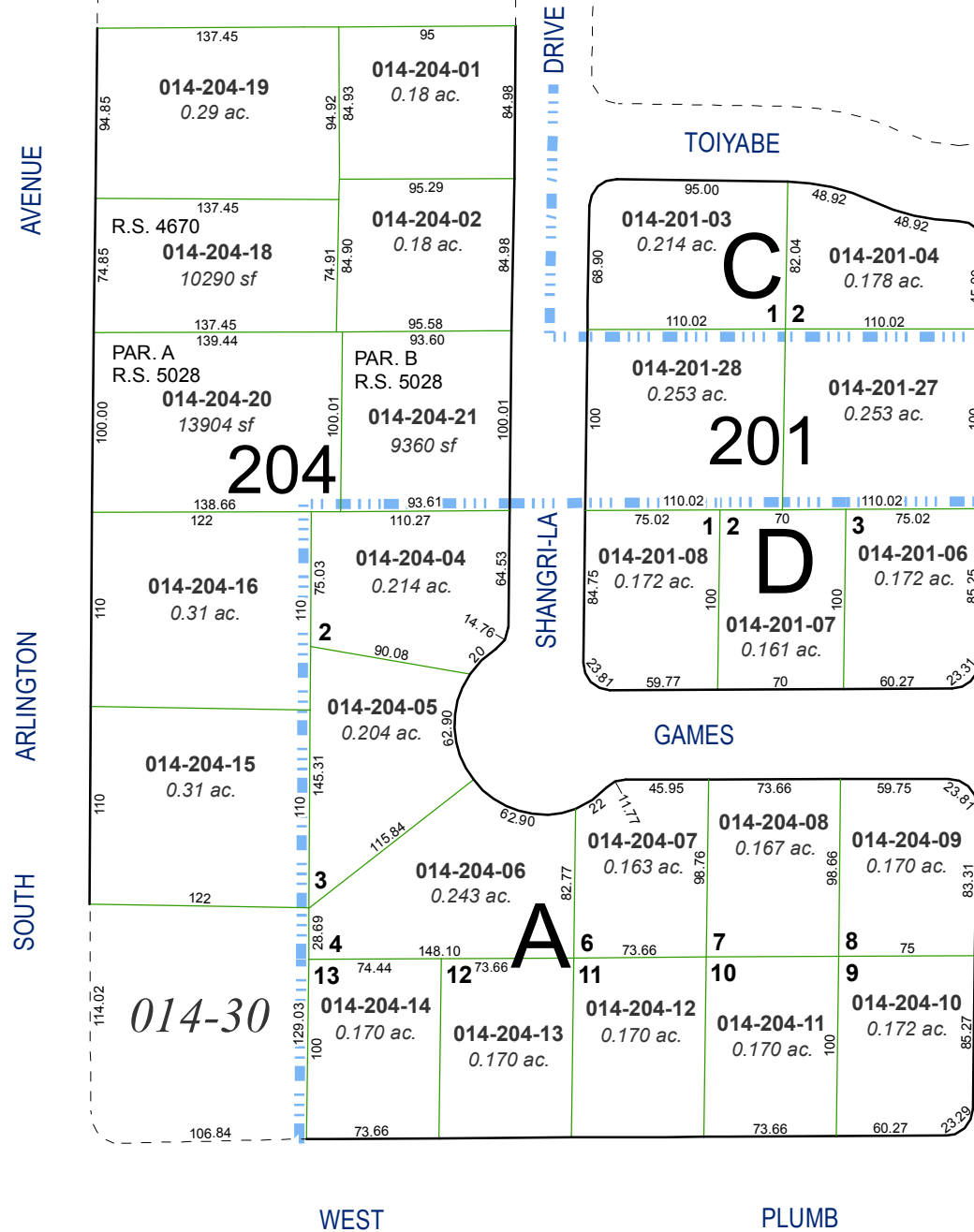


created by: TWT 2/20/2014

last updated: \_\_\_\_\_

area previously shown on map(s) \_\_\_\_\_

NOTE: This map was prepared for the use of the Washoe County Assessor for assessment and illustrative purposes only. It does not represent a survey of the premises. No liability is assumed as to the sufficiency or accuracy of the data delineated hereon.



# (#616) ARLINGTON PARK SUBDIVISION

SOUTH ARLINGTON

AVENUE

LANDER

STREET

STREET

TOLICA

STREET

PLUMAS

LANE