

(#2255)

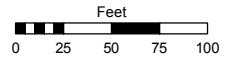
ARLINGTON COURT SUBDIVISION

PORTION OF THE SE 1/4 OF THE SW 1/4 OF SECTION 14
T19N - R19E

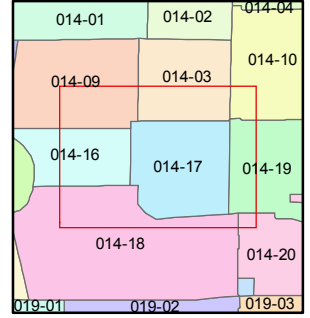
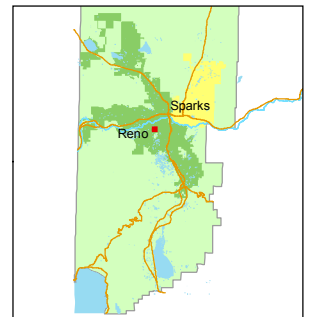
Assessor's Map Number
014-17

STATE OF NEVADA
WASHOE COUNTY
ASSESSOR'S OFFICE
Joshua G. Wilson, Assessor

1001 East Ninth Street
Building D
Reno, Nevada 89512
(775) 328-2231

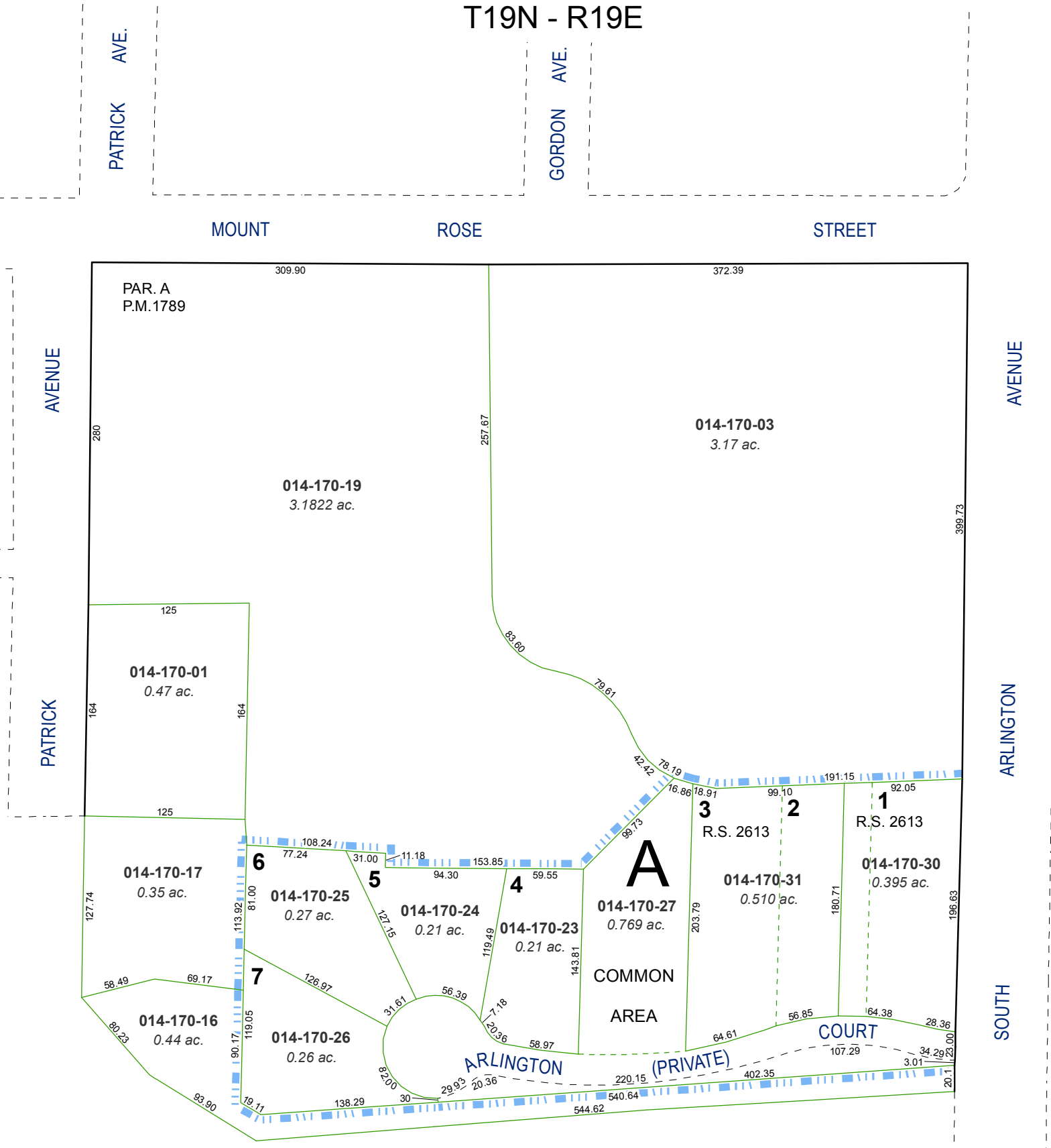


1 inch = 100 feet



created by: TWT 11/26/2013
last updated: _____
area previously shown on map(s) _____

NOTE: This map was prepared for the use of the Washoe County Assessor for assessment and illustrative purposes only. It does not represent a survey of the premises. No liability is assumed as to the sufficiency or accuracy of the data delineated hereon.



PATRICK AVE.

GORDON AVE.

MOUNT ROSE STREET

ARLINGTON COURT

PATRICK AVENUE

ARLINGTON AVENUE

SHANGRI-LA DRIVE

ARLINGTON AVENUE

SOUTH AVENUE

PAR. A
P.M. 1789

014-170-19
3.1822 ac.

014-170-03
3.17 ac.

014-170-01
0.47 ac.

014-170-17
0.35 ac.

014-170-25
0.27 ac.

014-170-24
0.21 ac.

014-170-23
0.21 ac.

014-170-27
0.769 ac.

014-170-31
0.510 ac.

014-170-30
0.395 ac.

014-170-16
0.44 ac.

014-170-26
0.26 ac.

A

R.S. 2613

R.S. 2613

COMMON AREA

ARLINGTON COURT (PRIVATE)