

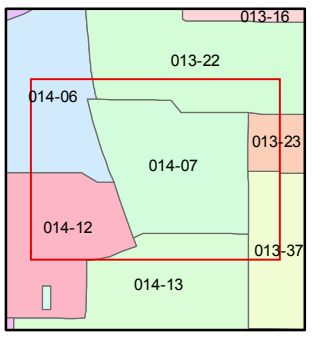
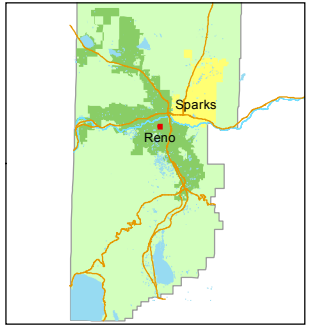
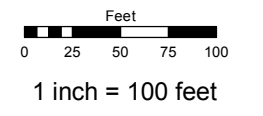
**(#65)  
McCORMICK ADDITION**

**(#123)  
TERRACE TRACT  
POR. WEST 1/2 SEC. 13  
T19N - R19E**

Assessor's Map Number  
**014-07**

STATE OF NEVADA  
**WASHOE COUNTY  
ASSESSOR'S OFFICE**  
Michael E. Clark, Assessor

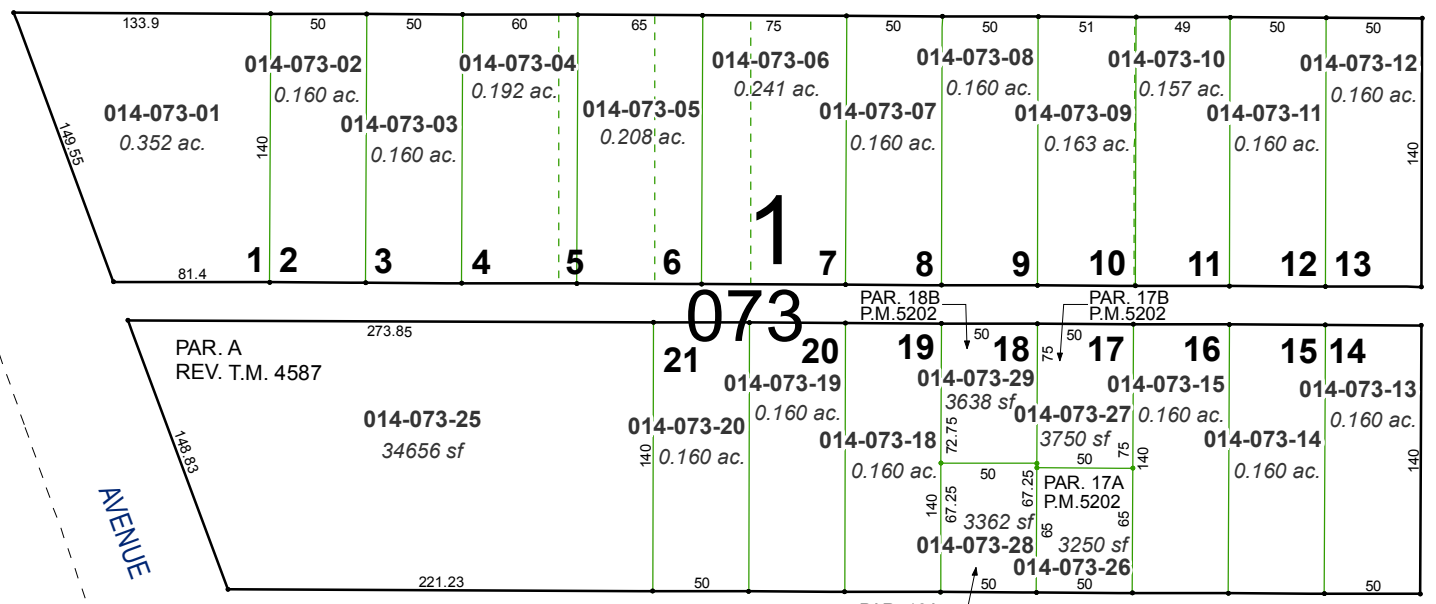
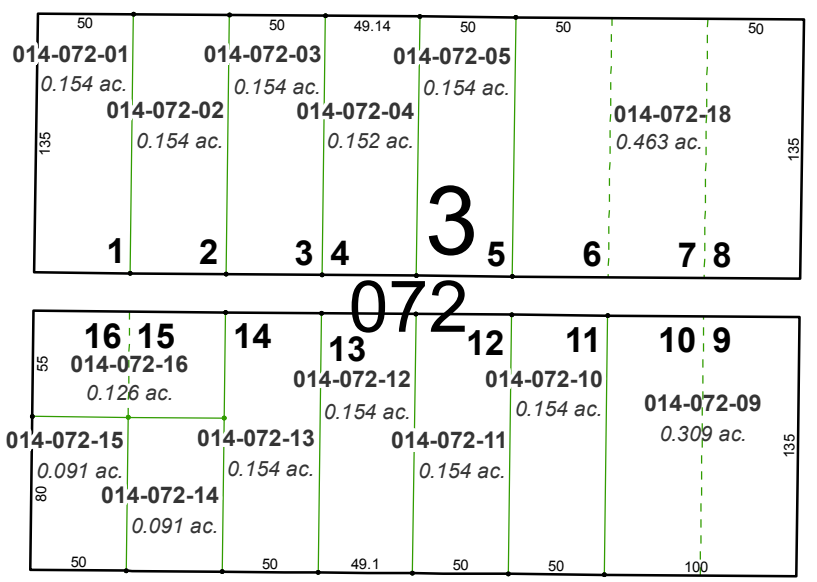
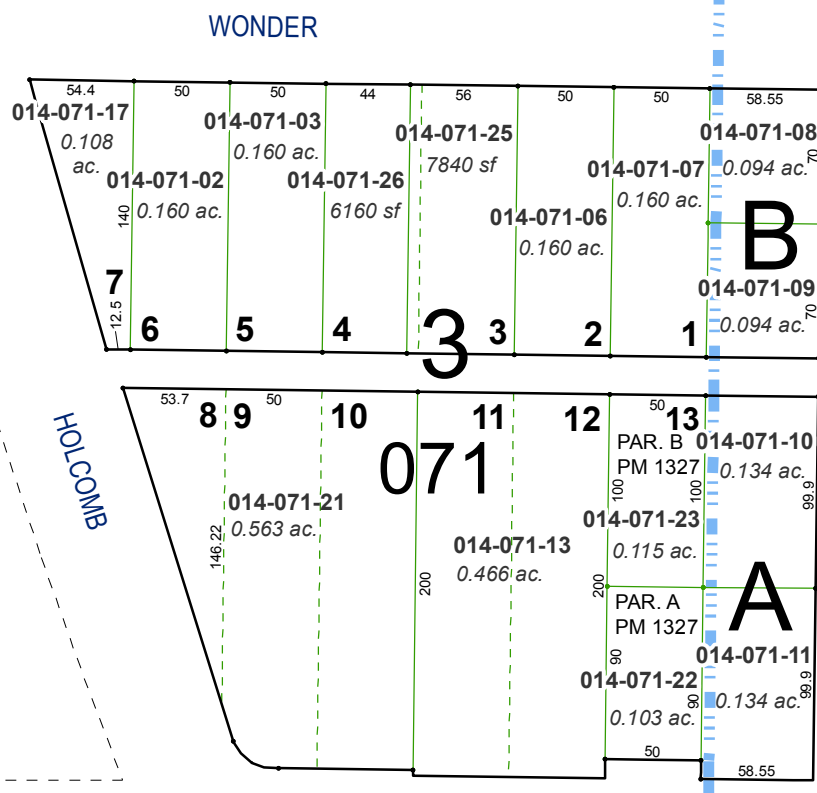
1001 East Ninth Street  
Building D  
Reno, Nevada 89512  
(775) 328-2231



created by: TWT 10/15/2013  
last updated: EMG 1/21/16

area previously shown on map(s)

NOTE: This map was prepared for the use of the Washoe County Assessor for assessment and illustrative purposes only. It does not represent a survey of the premises. No liability is assumed as to the sufficiency or accuracy of the data delineated hereon.



**(#130)  
AMENDED VICTORIA PARK TRACT**

WONDER  
HOLCOMB  
SOUTH  
CALIENTE STREET  
VIRGINIA  
W. ARROYO STREET  
EAST

AVENUE

STREET

AVENUE

STREET

WELLS

SOUTH

ARROYO

STREET

BROADWAY BLVD.