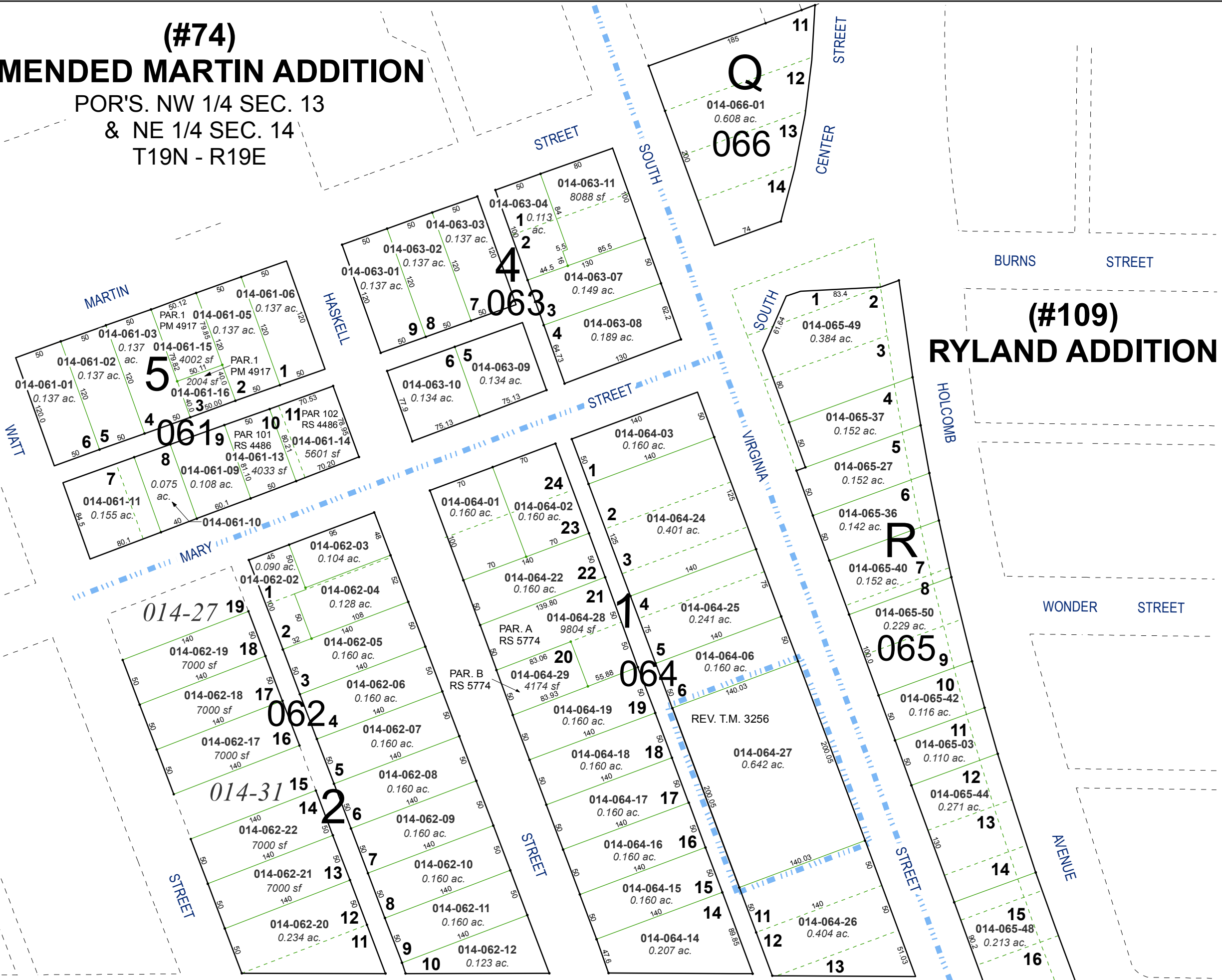


(#74) AMENDED MARTIN ADDITION

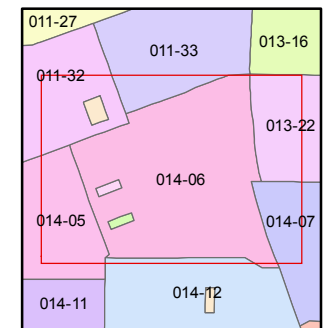
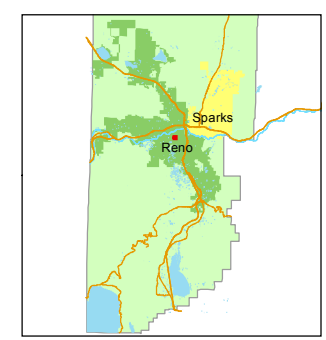
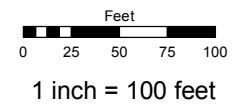
POR'S. NW 1/4 SEC. 13
& NE 1/4 SEC. 14
T19N - R19E



Assessor's Map Number
014-06

STATE OF NEVADA
WASHOE COUNTY
ASSESSOR'S OFFICE
Michael E. Clark, Assessor

1001 East Ninth Street
Building D
Reno, Nevada 89512
(775) 328-2231



created by: TWT 10/14/2013
last updated: JMO 1/13/17

area previously shown on map(s)

NOTE: This map was prepared for the use of the Washoe County Assessor for assessment and illustrative purposes only. It does not represent a survey of the premises. No liability is assumed as to the sufficiency or accuracy of the data delineated hereon.