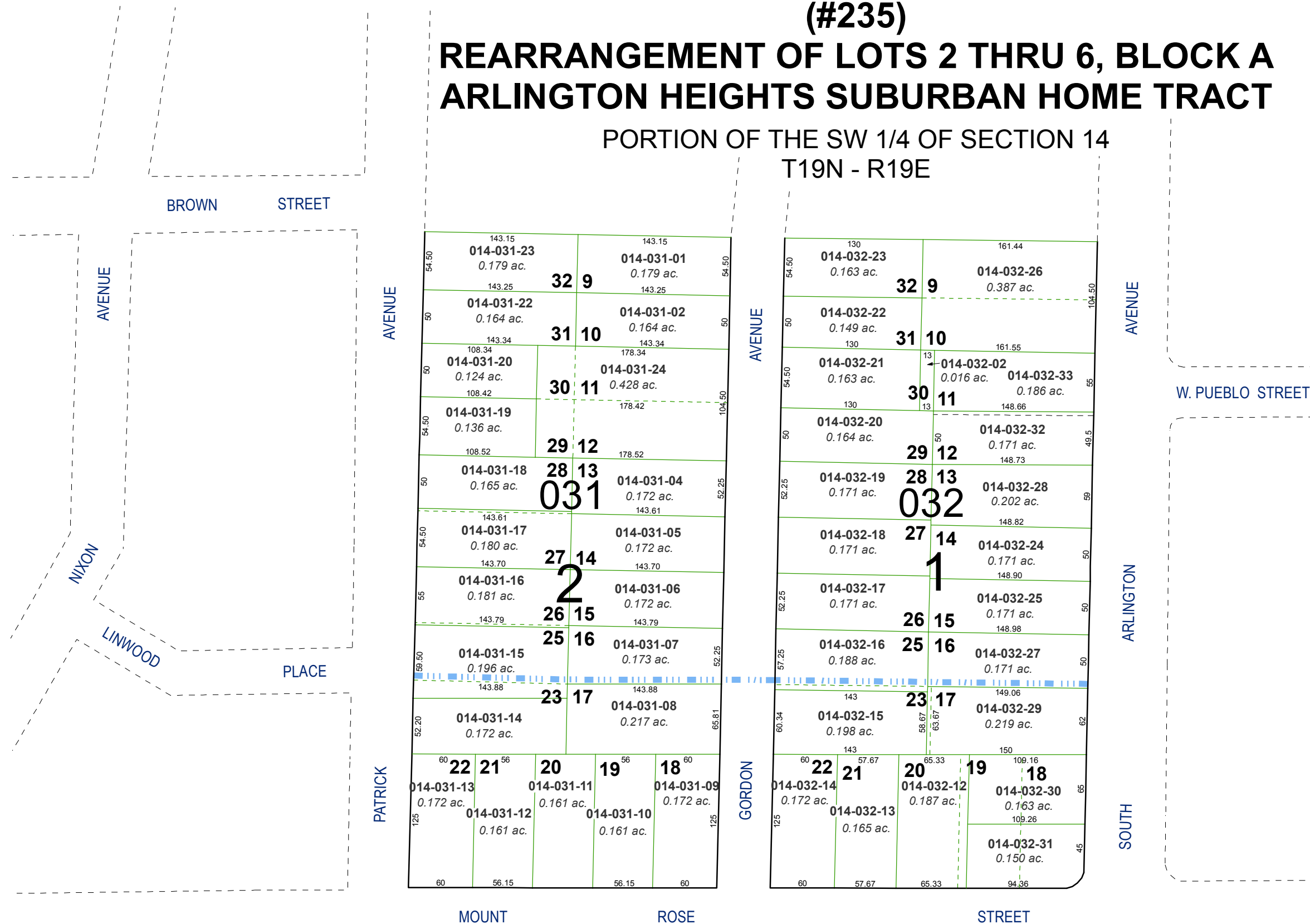


(#235) REARRANGEMENT OF LOTS 2 THRU 6, BLOCK A ARLINGTON HEIGHTS SUBURBAN HOME TRACT

PORTION OF THE SW 1/4 OF SECTION 14
T19N - R19E



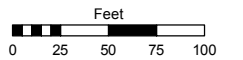
(#250) REARRANGEMENT OF LOTS 17 THRU 24, BLOCKS 1 AND 2 OF REARRANGED LOTS 2 THRU 6 OF BLOCK A ARLINGTON HEIGHTS SUBURBAN HOME TRACT

Assessor's Map Number

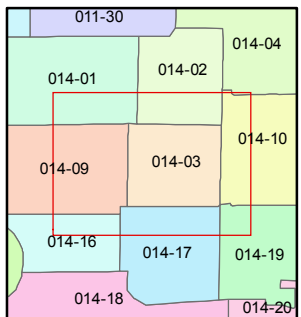
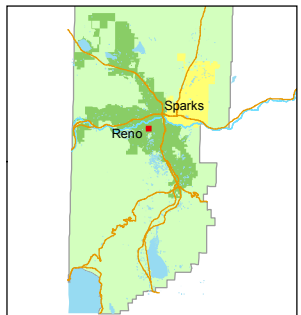
014-03

STATE OF NEVADA
WASHOE COUNTY
ASSESSOR'S OFFICE
Joshua G. Wilson, Assessor

1001 East Ninth Street
Building D
Reno, Nevada 89512
(775) 328-2231



1 inch = 100 feet



created by: TWT 10/10/2013

last updated: _____

area previously shown on map(s) _____

NOTE: This map was prepared for the use of the Washoe County Assessor for assessment and illustrative purposes only. It does not represent a survey of the premises. No liability is assumed as to the sufficiency or accuracy of the data delineated herein.