

# PARCEL MAPS 4385 & 4878

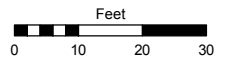
LOT 3, BLOCK 3 OF  
SOUTHERN ADDITION (#115)  
PORTION OF THE SW 1/4 OF SECTION 12  
T19N - R19E

Assessor's Map Number

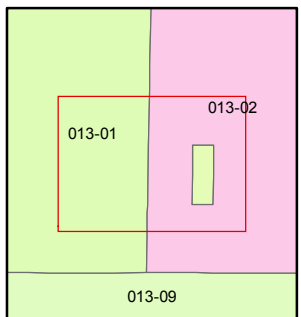
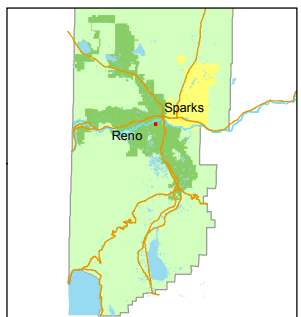
**013-53**

STATE OF NEVADA  
**WASHOE COUNTY**  
ASSESSOR'S OFFICE  
Joshua G. Wilson, Assessor

1001 East Ninth Street  
Building D  
Reno, Nevada 89512  
(775) 328-2231



1 inch = 30 feet



created by: TWT 9/23/2013

last updated: \_\_\_\_\_

area previously shown on map(s)

013-02

NOTE: This map was prepared for the use of the Washoe County Assessor for assessment and illustrative purposes only. It does not represent a survey of the premises. No liability is assumed as to the sufficiency or accuracy of the data delineated hereon.

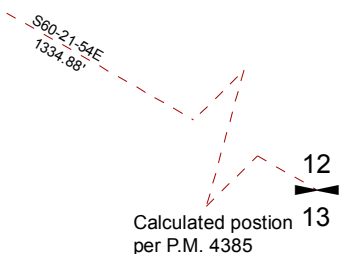
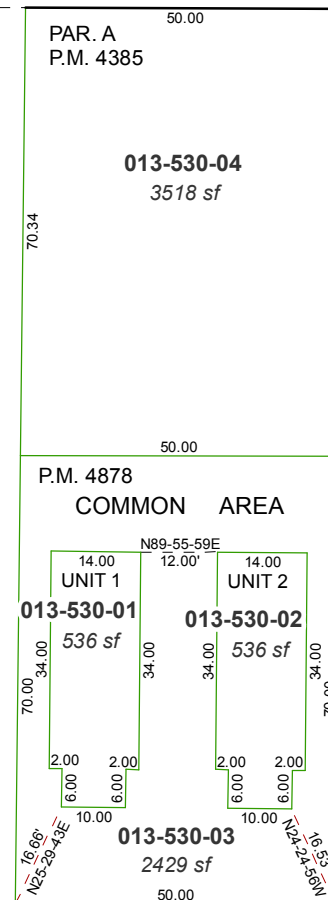
STEWART

STREET

WELLS

AVENUE

SOUTH



ALLEY