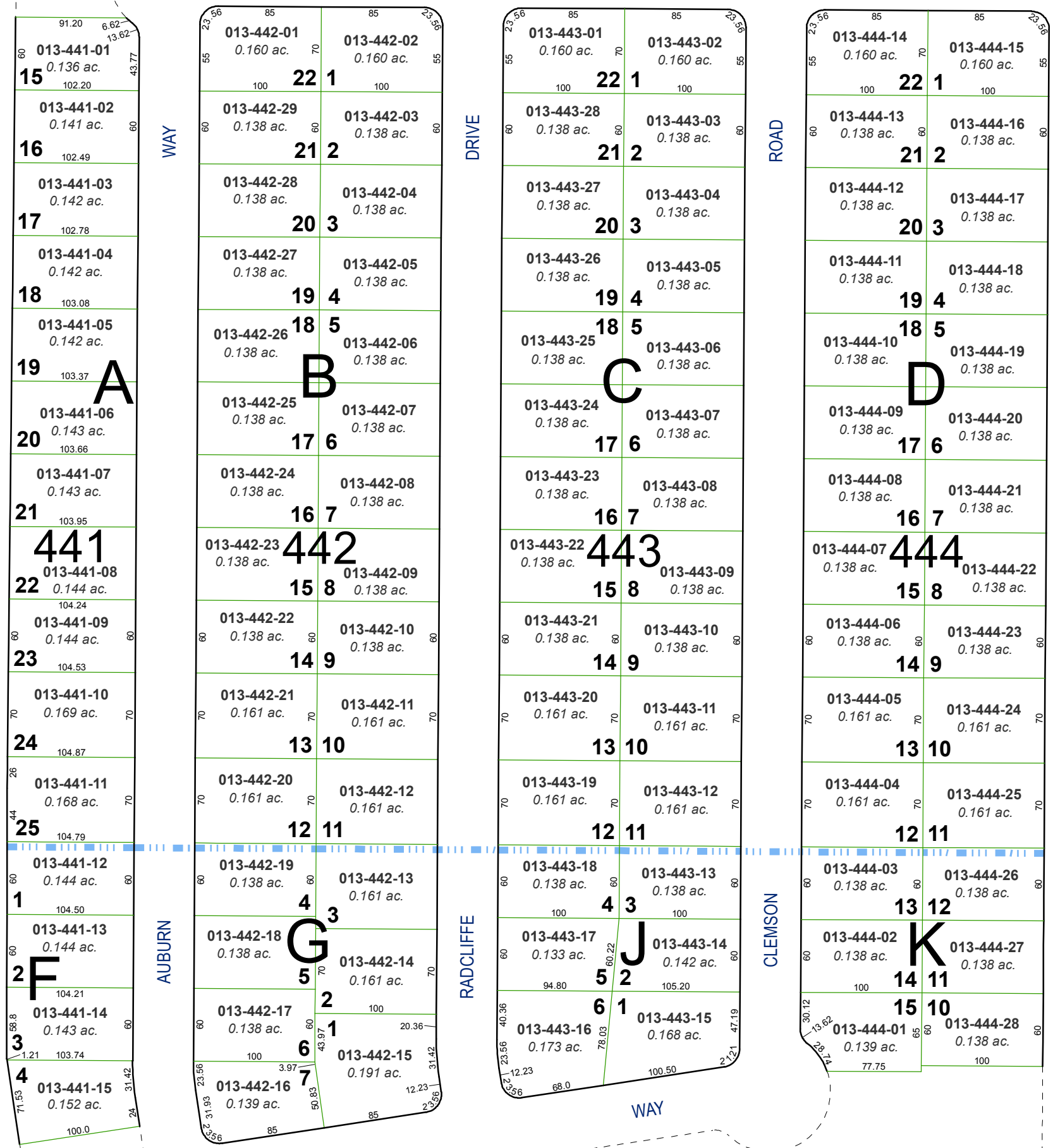


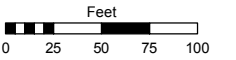
PRINCETON (#515) ACADEMY MANOR NO. 1 DRIVE



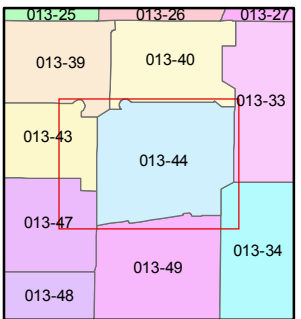
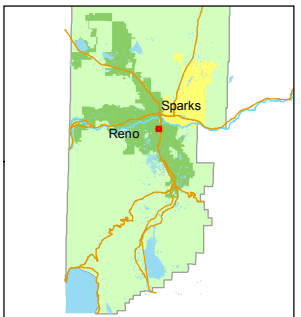
013-44

STATE OF NEVADA
WASHOE COUNTY
ASSESSOR'S OFFICE
Joshua G. Wilson, Assessor

1001 East Ninth Street
Building D
Reno, Nevada 89512
(775) 328-2231



1 inch = 100 feet



created by: TWT 9/13/2013

last updated: _____

area previously shown on map(s) _____

(#571)
ACADEMY MANOR NO. 2

NOTE: This map was prepared for the use of the Washoe County Assessor for assessment and illustrative purposes only. It does not represent a survey of the premises. No liability is assumed as to the sufficiency or accuracy of the data delineated hereon.