

**(#480)  
MORTON  
SUB. NO. 2**

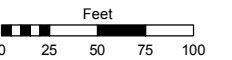
**(#489)  
MEYER MEADOWS SUBDIVISION  
PORTION OF THE SE 1/4 OF SECTION 13  
T19N - R19E**

Assessor's Map Number

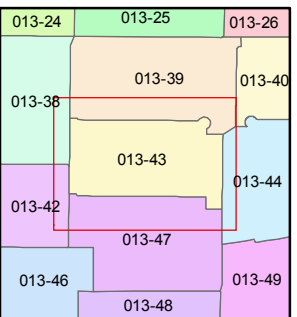
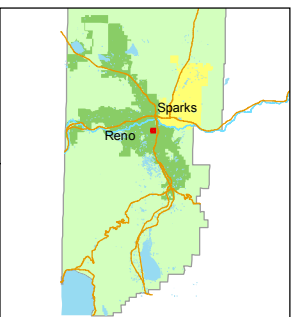
**013-43**

STATE OF NEVADA  
**WASHOE COUNTY**  
ASSESSOR'S OFFICE  
Joshua G. Wilson, Assessor

1001 East Ninth Street  
Building D  
Reno, Nevada 89512  
(775) 328-2231



1 inch = 100 feet

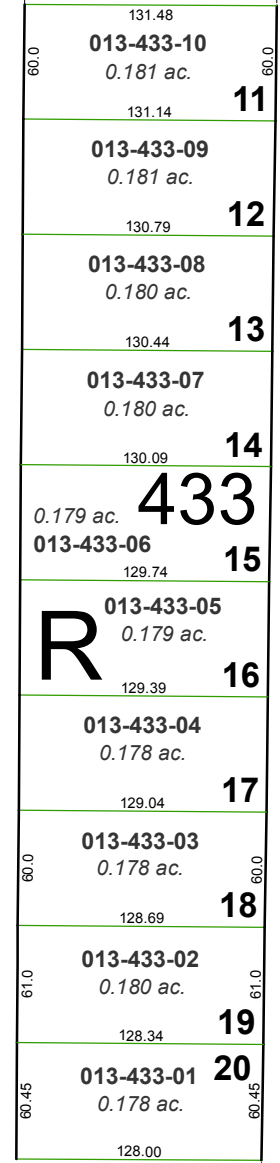
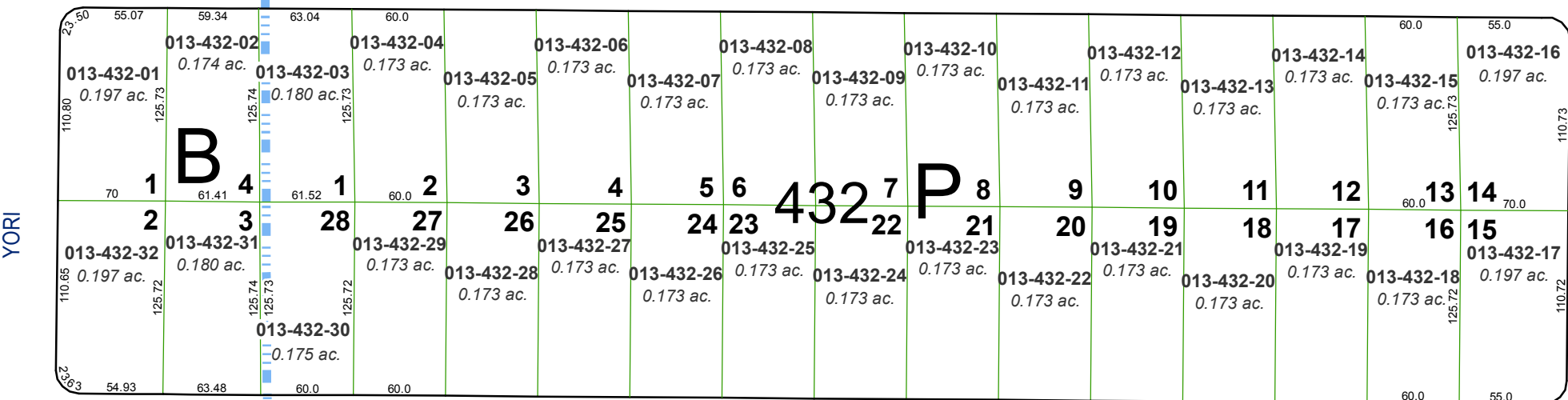
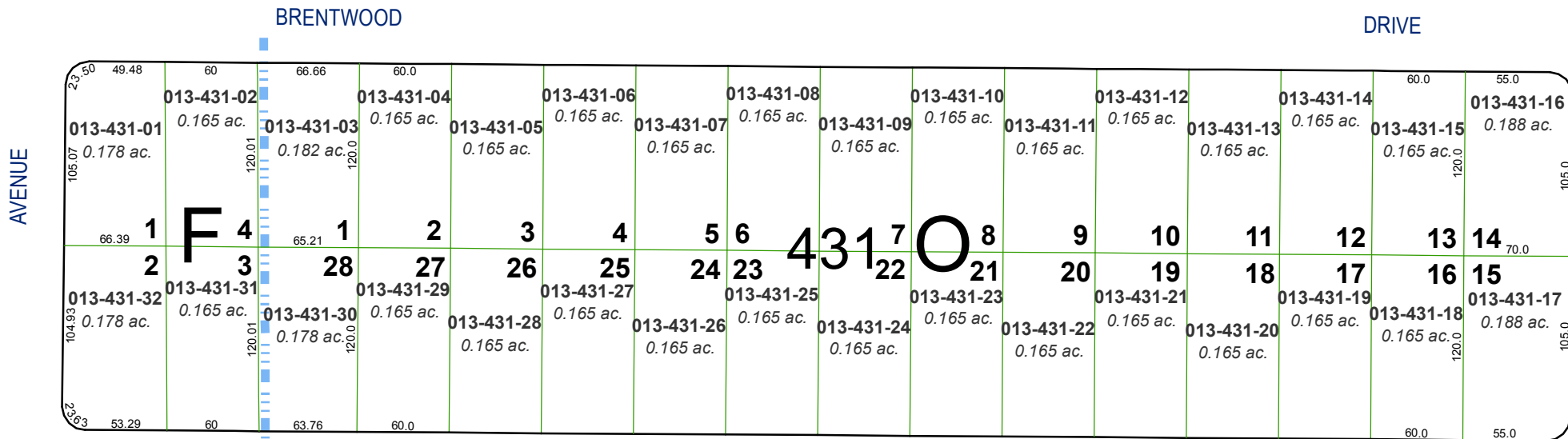


created by: TWT 9/12/2013

last updated: \_\_\_\_\_

area previously shown on map(s) \_\_\_\_\_

NOTE: This map was prepared for the use of the Washoe County Assessor for assessment and illustrative purposes only. It does not represent a survey of the premises. No liability is assumed as to the sufficiency or accuracy of the data delineated hereon.



**(#438)  
MORTON  
SUBDIVISION**

CHASKA PLACE

GRASSLAND PLACE

EMERALD PLACE

LAILO DRIVE

KIETZKE LANE