

(#450) TUCKETT SUBDIVISION

(#483) HEMPSTEAD GARDENS

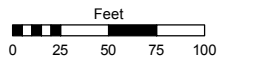
PORTION OF THE NE 1/4 OF SECTION 13
T19N - R19E

Assessor's Map Number

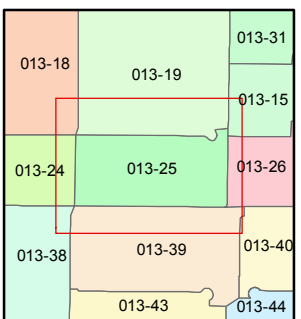
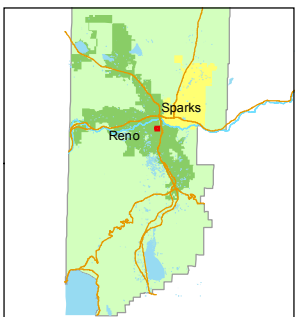
013-25

STATE OF NEVADA
WASHOE COUNTY
ASSESSOR'S OFFICE
Joshua G. Wilson, Assessor

1001 East Ninth Street
Building D
Reno, Nevada 89512
(775) 328-2231



1 inch = 100 feet

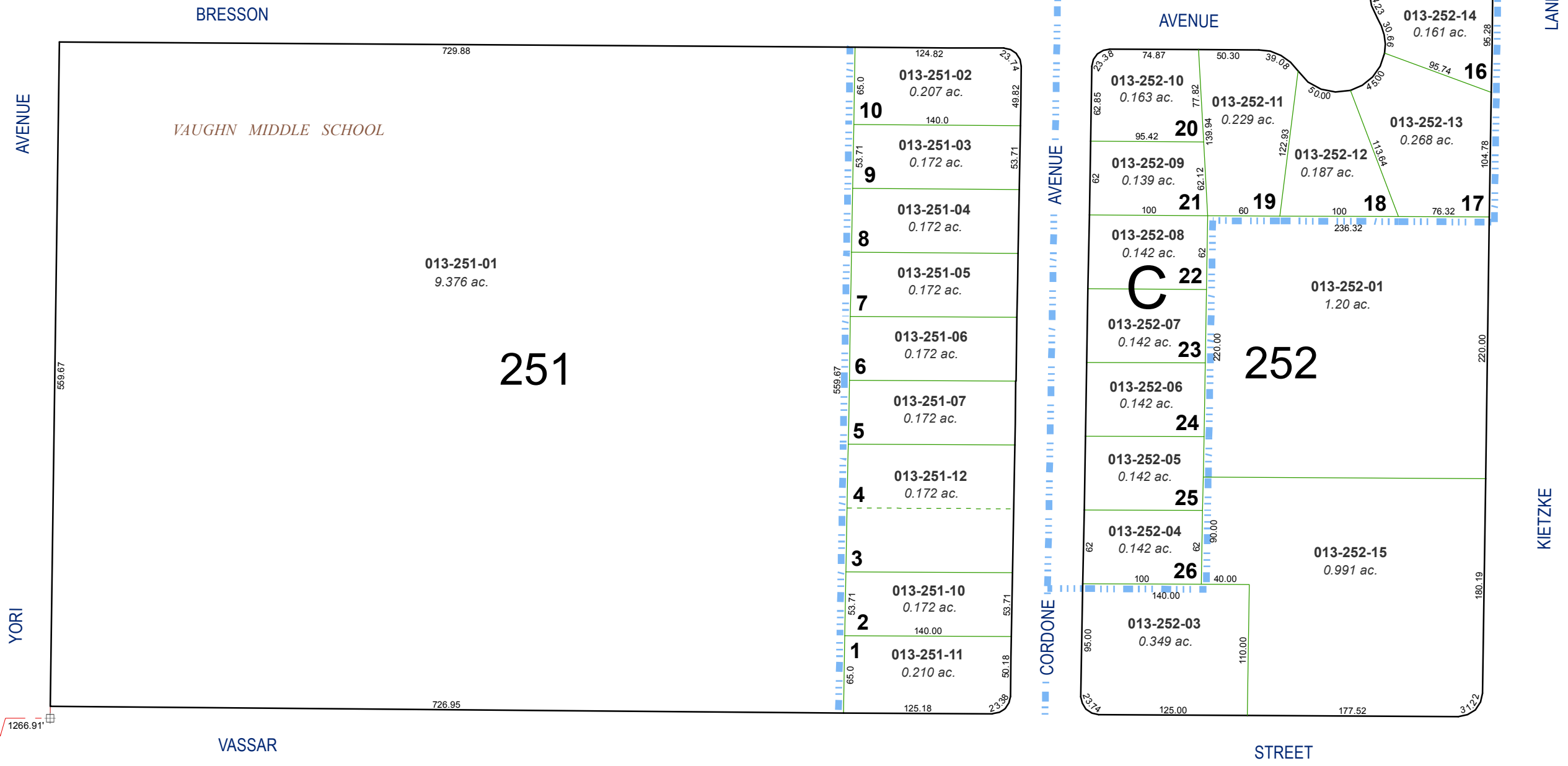


created by: TWT 8/15/2013

last updated: _____

area previously shown on map(s) _____

NOTE: This map was prepared for the use of the Washoe County Assessor for assessment and illustrative purposes only. It does not represent a survey of the premises. No liability is assumed as to the sufficiency or accuracy of the data delineated hereon.



Center Sec. 13
N89°39'E 1266.91'