

013-16

PORTION OF THE NW 1/4 OF SECTION 13 T19N - R19E

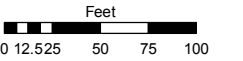
# (#170) AMENDED BURKE'S ADDITION (BLOCKS 14, 17 & 18)

Assessor's Map Number

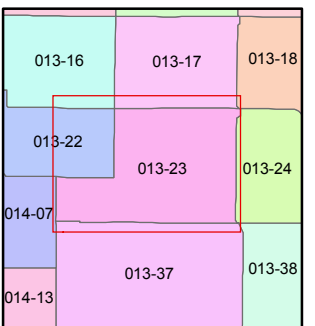
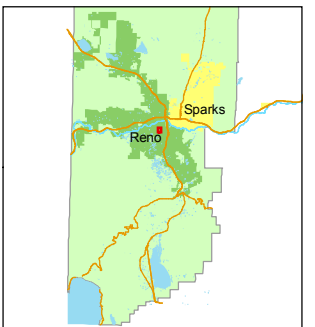
**013-23**

STATE OF NEVADA  
**WASHOE COUNTY**  
ASSESSOR'S OFFICE  
Joshua G. Wilson, Assessor

1001 East Ninth Street  
Building D  
Reno, Nevada 89512  
(775) 328-2231



1 inch = 100 feet



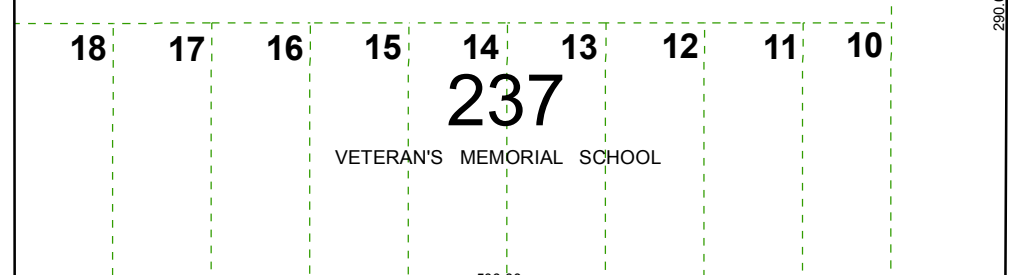
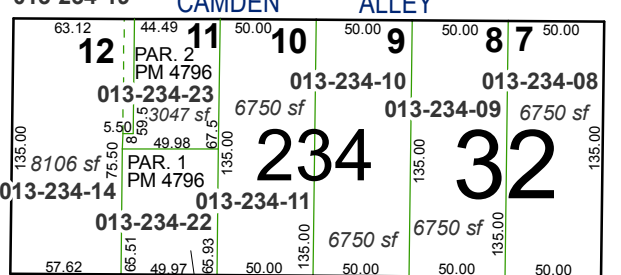
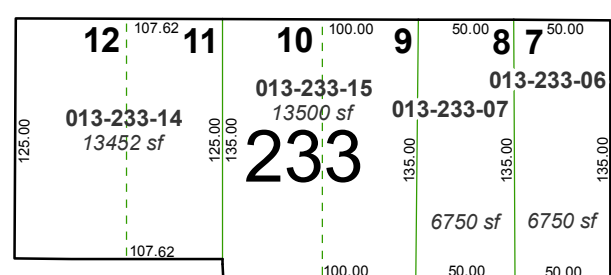
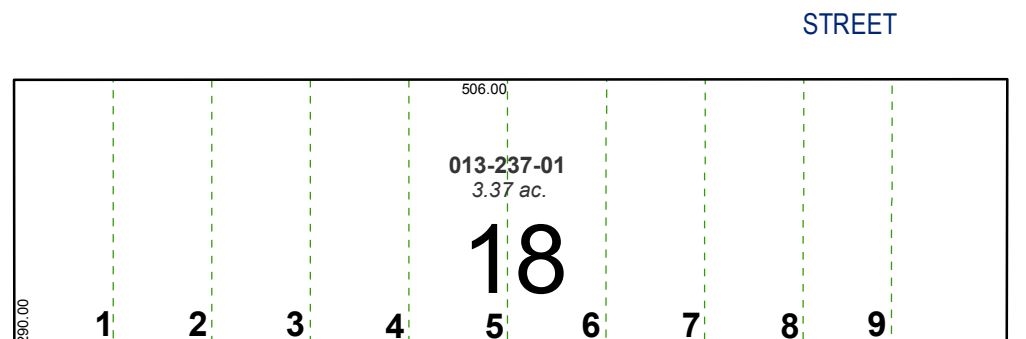
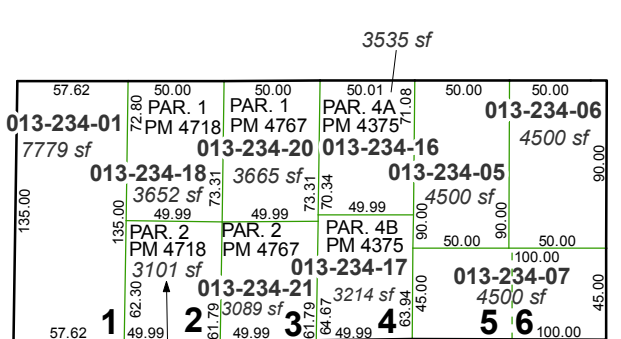
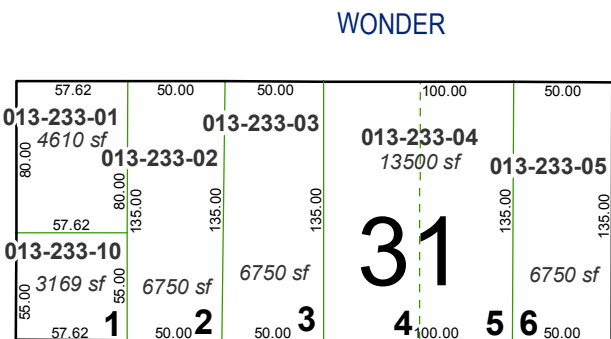
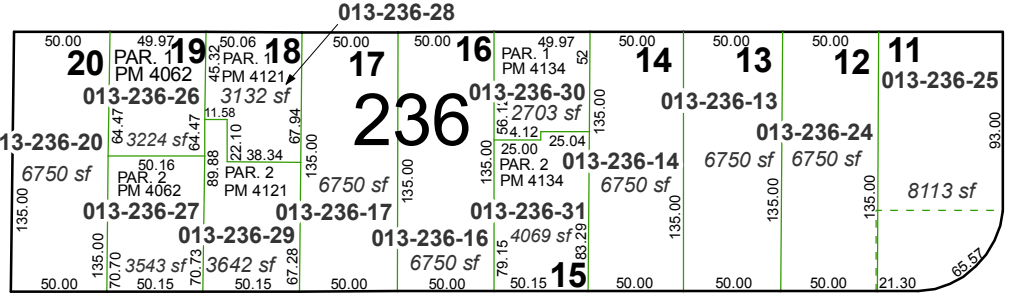
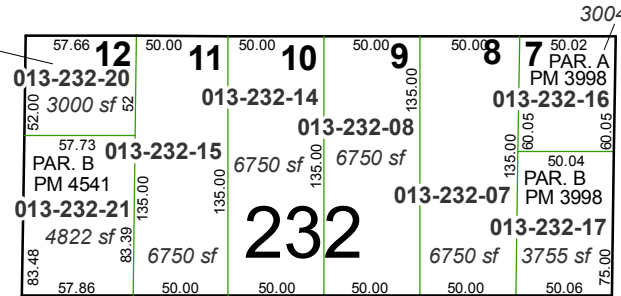
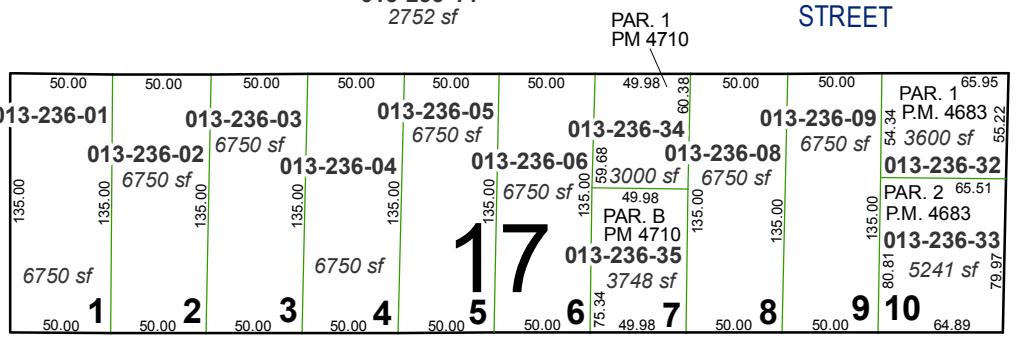
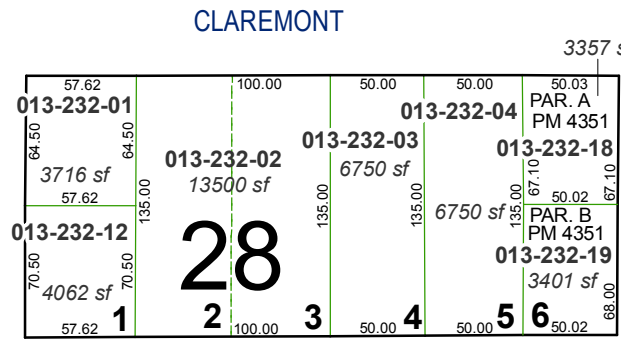
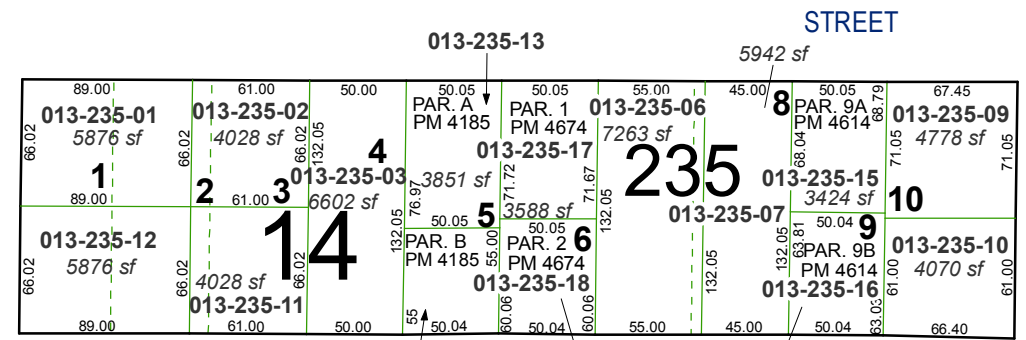
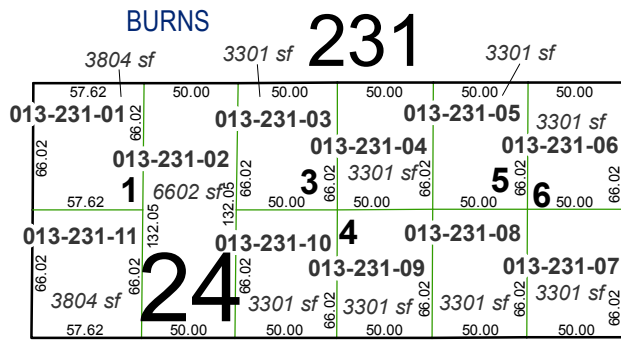
created by: CFB 10/08/2010

last updated: \_\_\_\_\_

area previously shown on map(s) \_\_\_\_\_

NOTE: This map was prepared for the use of the Washoe County Assessor for assessment and illustrative purposes only. It does not represent a survey of the premises. No liability is assumed as to the sufficiency or accuracy of the data delineated hereon.

## (#7) BURKE'S ADDITION



AVENUE

AVENUE

STREET

AVENUE

WELLS

WILSON

LOCUST

KIRMAN

SOUTH

WILSON

LOCUST

KIRMAN

VASSAR

STREET