

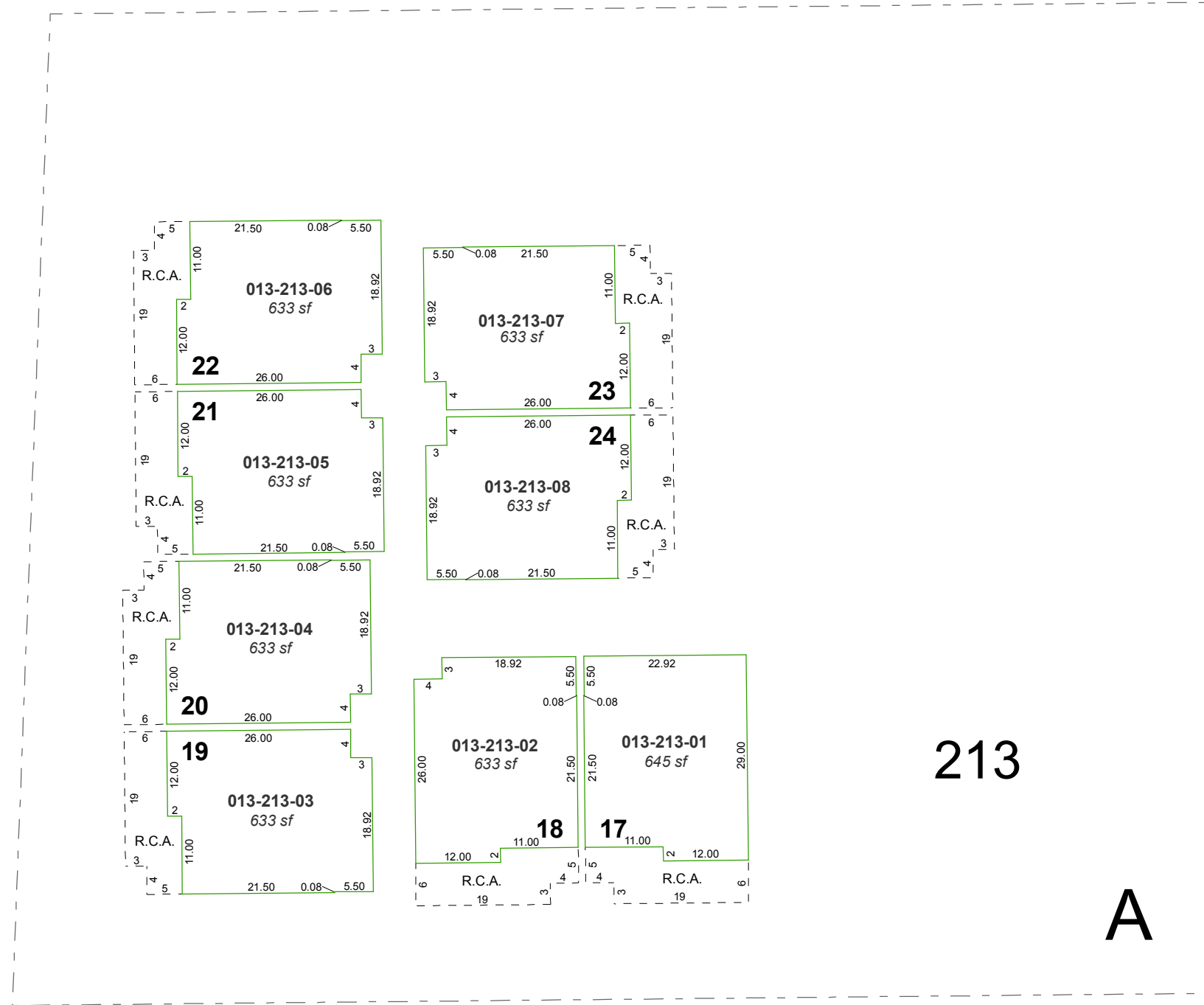
(#2150) CAMPBELL CONDOMINIUMS

A DIVISION OF LOTS 16, 17, & 18 OF BLOCK 7
WELL'S ADDITION TO RENO

A POR. OF THE NW ¼ OF SEC. 13
T19N - R19E

3rd FLOOR

TO EACH A 1/24 UNDIVIDED
INTEREST IN COMMON AREA

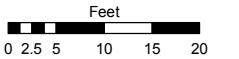


Assessor's Map Number

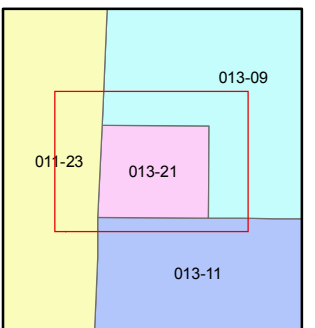
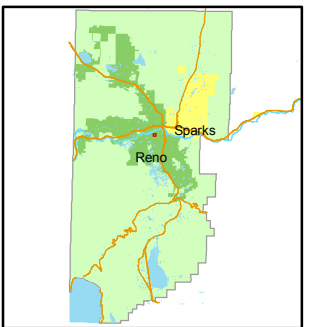
013-21-S2

STATE OF NEVADA
WASHOE COUNTY
ASSESSOR'S OFFICE
Joshua G. Wilson, Assessor

1001 East Ninth Street
Building D
Reno, Nevada 89512
(775) 328-2231



1 inch = 20 feet



created by: NLH 3/09/2011

last updated: _____

area previously shown on map(s)

013-09

R.C.A. = RESTRICTED COMMON AREA

NOTE: This map was prepared for the use of the Washoe County Assessor for assessment and illustrative purposes only. It does not represent a survey of the premises. No liability is assumed as to the sufficiency or accuracy of the data delineated hereon.