

(#310) ALBION SUBDIVISION (#483) HEMPSTEAD GARDENS

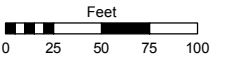
POR. OF THE NE 1/4 OF SEC. 13, T19N - R19E

Assessor's Map Number

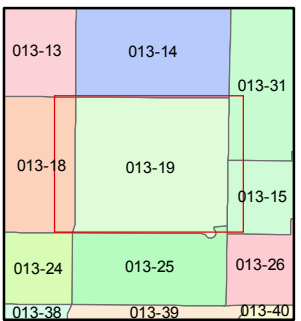
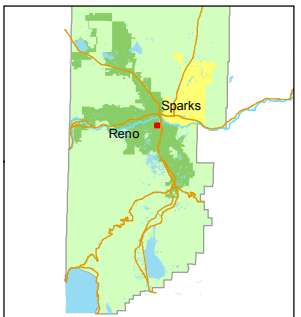
013-19

STATE OF NEVADA
WASHOE COUNTY
ASSESSOR'S OFFICE
 Joshua G. Wilson, Assessor

1001 East Ninth Street
 Building D
 Reno, Nevada 89512
 (775) 328-2231



1 inch = 100 feet

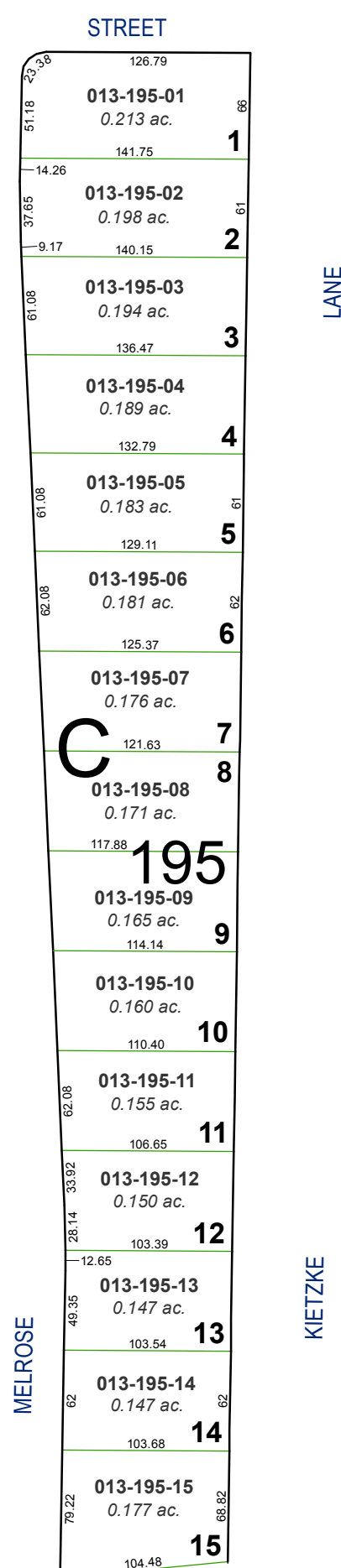
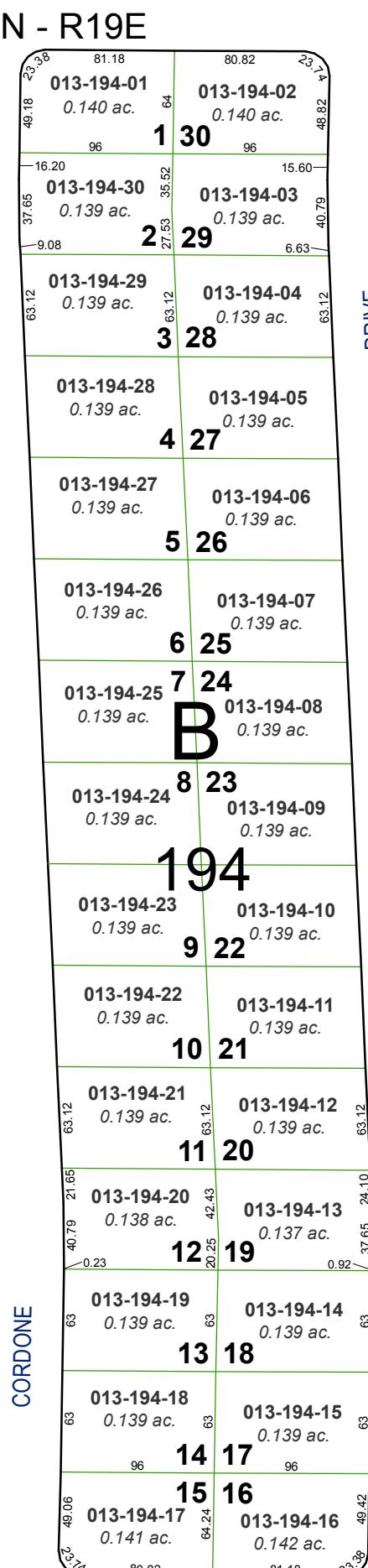
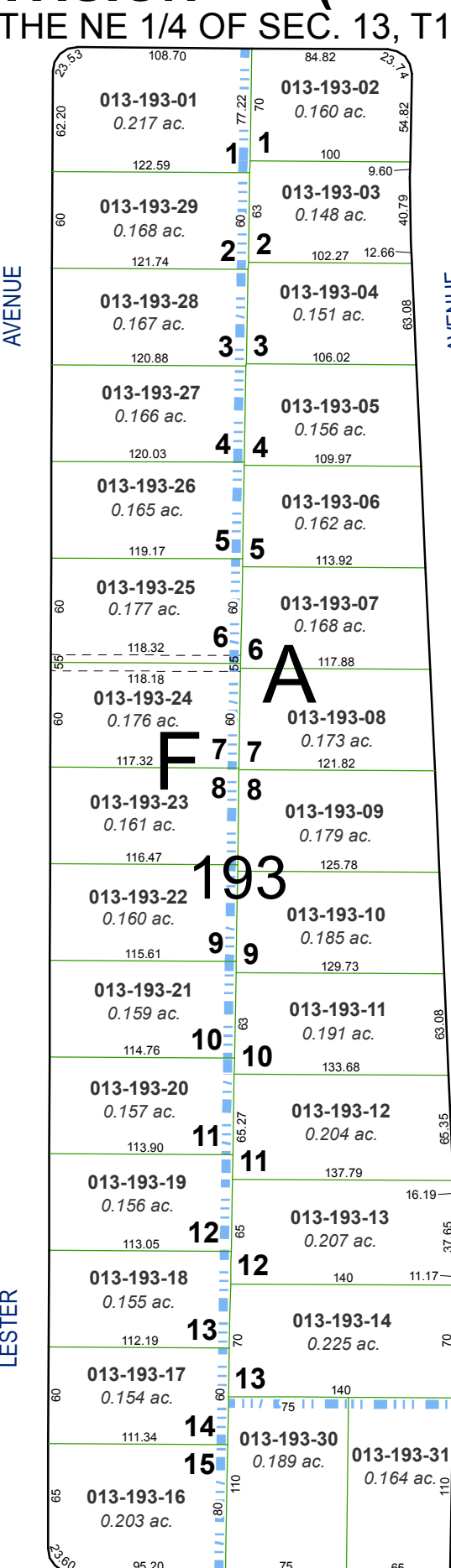
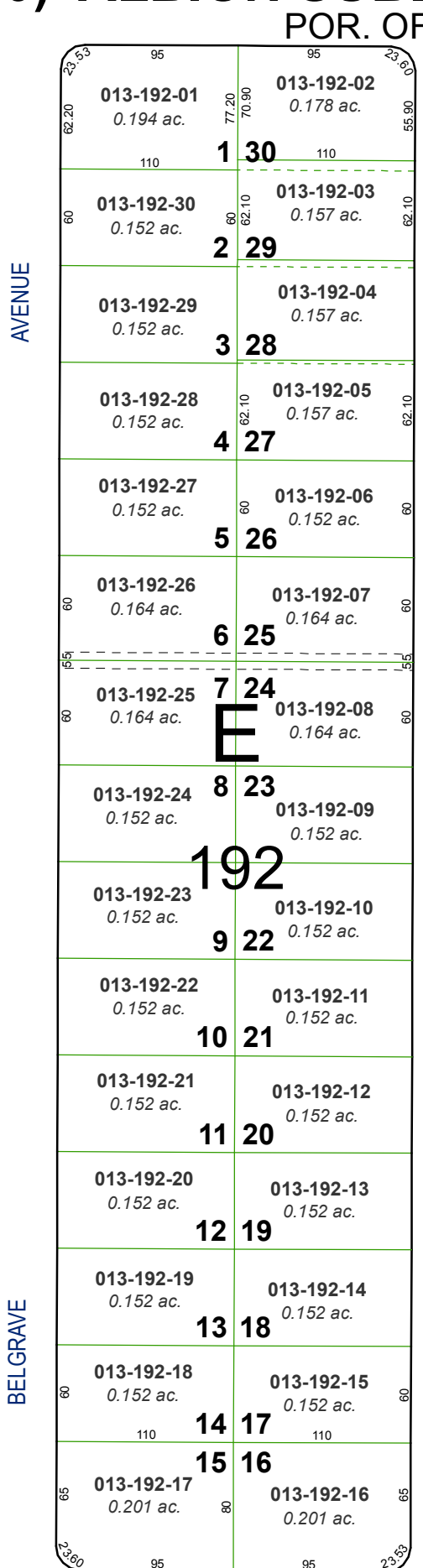
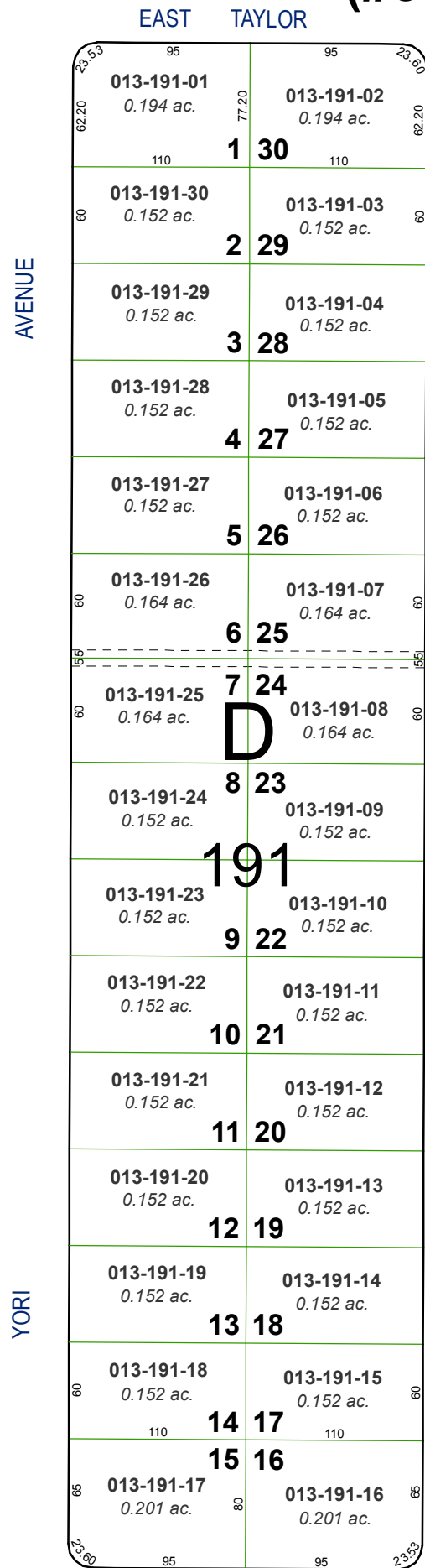


created by: TWT 8/5/2013

last updated: _____

area previously shown on map(s) _____

NOTE: This map was prepared for the use of the Washoe County Assessor for assessment and illustrative purposes only. It does not represent a survey of the premises. No liability is assumed as to the sufficiency or accuracy of the data delineated hereon.



BRESSON

AVENUE