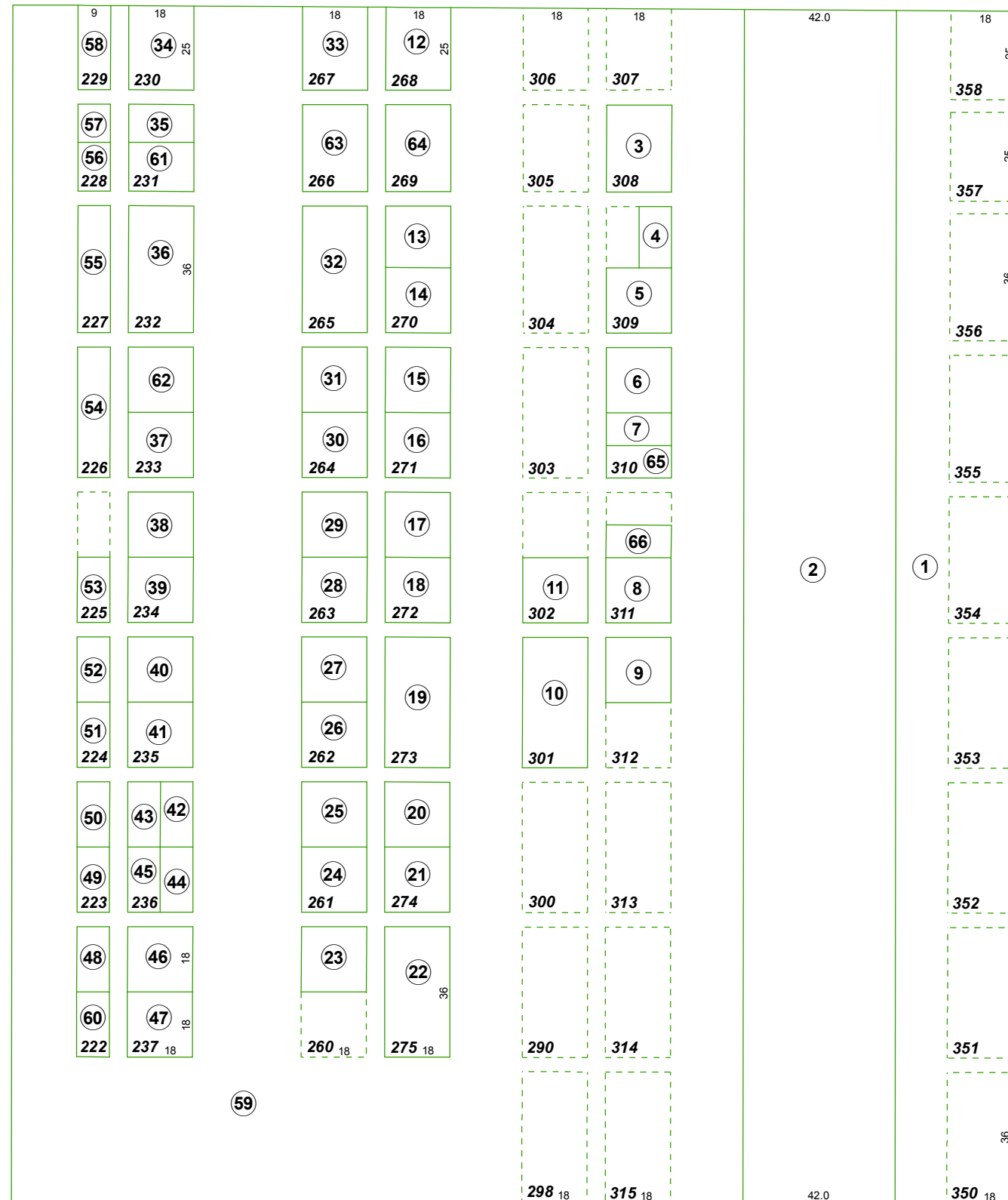


(#156)
PORTION OF HILLSIDE CEMETERY
 PORTION OF THE SW 1/4 OF SECTION 2
 T19N - R19E



STREET

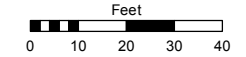
ANGEL

WEST TENTH STREET

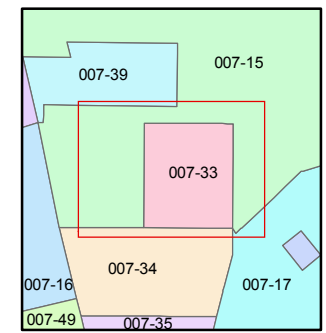
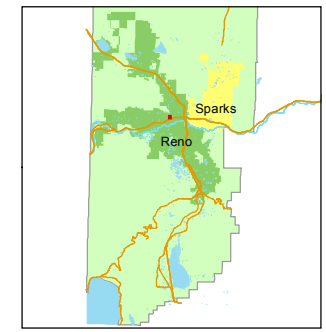
Assessor's Map Number
007-33

STATE OF NEVADA
WASHOE COUNTY
 ASSESSOR'S OFFICE
 Joshua G. Wilson, Assessor

1001 East Ninth Street
 Building D
 Reno, Nevada 89512
 (775) 328-2231



1 inch = 40 feet



created by: TWT 9/18/2012

last updated: _____

area previously shown on map(s)

NOTE: This map was prepared for the use of the Washoe County Assessor for assessment and illustrative purposes only. It does not represent a survey of the premises. No liability is assumed as to the sufficiency or accuracy of the data delineated hereon.