

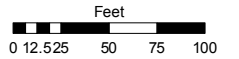
(#119 & #120)
ST. GEORGE'S ADDITION
 PORTION OF SW ¼ SECTION 2
 T19N - R19E

Assessor's Map Number

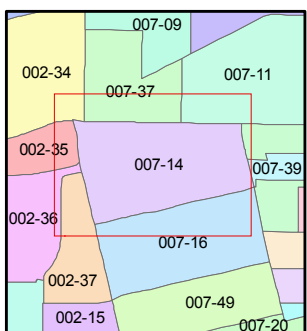
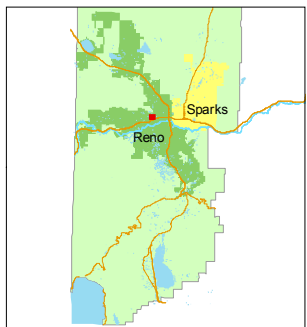
007-14

STATE OF NEVADA
WASHOE COUNTY
ASSESSOR'S OFFICE
 Joshua G. Wilson, Assessor

1001 East Ninth Street
 Building D
 Reno, Nevada 89512
 (775) 328-2231



1 inch = 100 feet



created by: KSB 9/20/2010

last updated: CFB 06/07/2011

area previously shown on map(s)

NOTE: This map was prepared for the use of the Washoe County Assessor for assessment and illustrative purposes only. It does not represent a survey of the premises. No liability is assumed as to the sufficiency or accuracy of the data delineated hereon.

