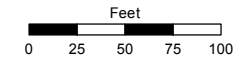


**(#4847)**  
**AMBER MEADOWS PHASE 1**  
 A POR. OF THE W 1/2 OF SEC. 9  
 T20N - R19E

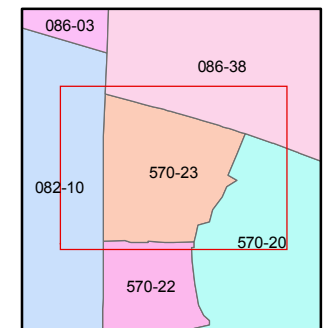
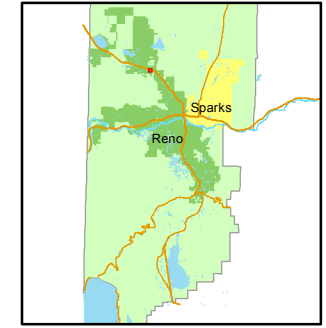
Assessor's Map Number  
**570-23**

STATE OF NEVADA  
**WASHOE COUNTY**  
**ASSESSOR'S OFFICE**  
 Joshua G. Wilson, Assessor

1001 East Ninth Street  
 Building D  
 Reno, Nevada 89512  
 (775) 328-2231



1 inch = 100 feet



created by: NLH 3/22/2012  
 last updated: \_\_\_\_\_  
 area previously shown on map(s)  
082-11

NOTE: This map was prepared for the use of the Washoe County Assessor for assessment and illustrative purposes only. It does not represent a survey of the premises. No liability is assumed as to the sufficiency or accuracy of the data delineated hereon.

