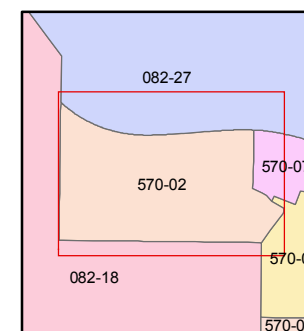
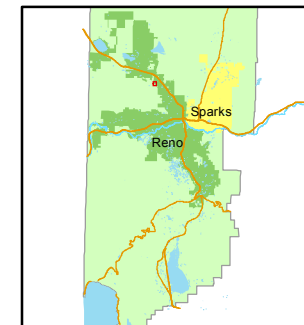


1 inch = 100 feet



created by: NLH 3/22/2012

last updated: _____

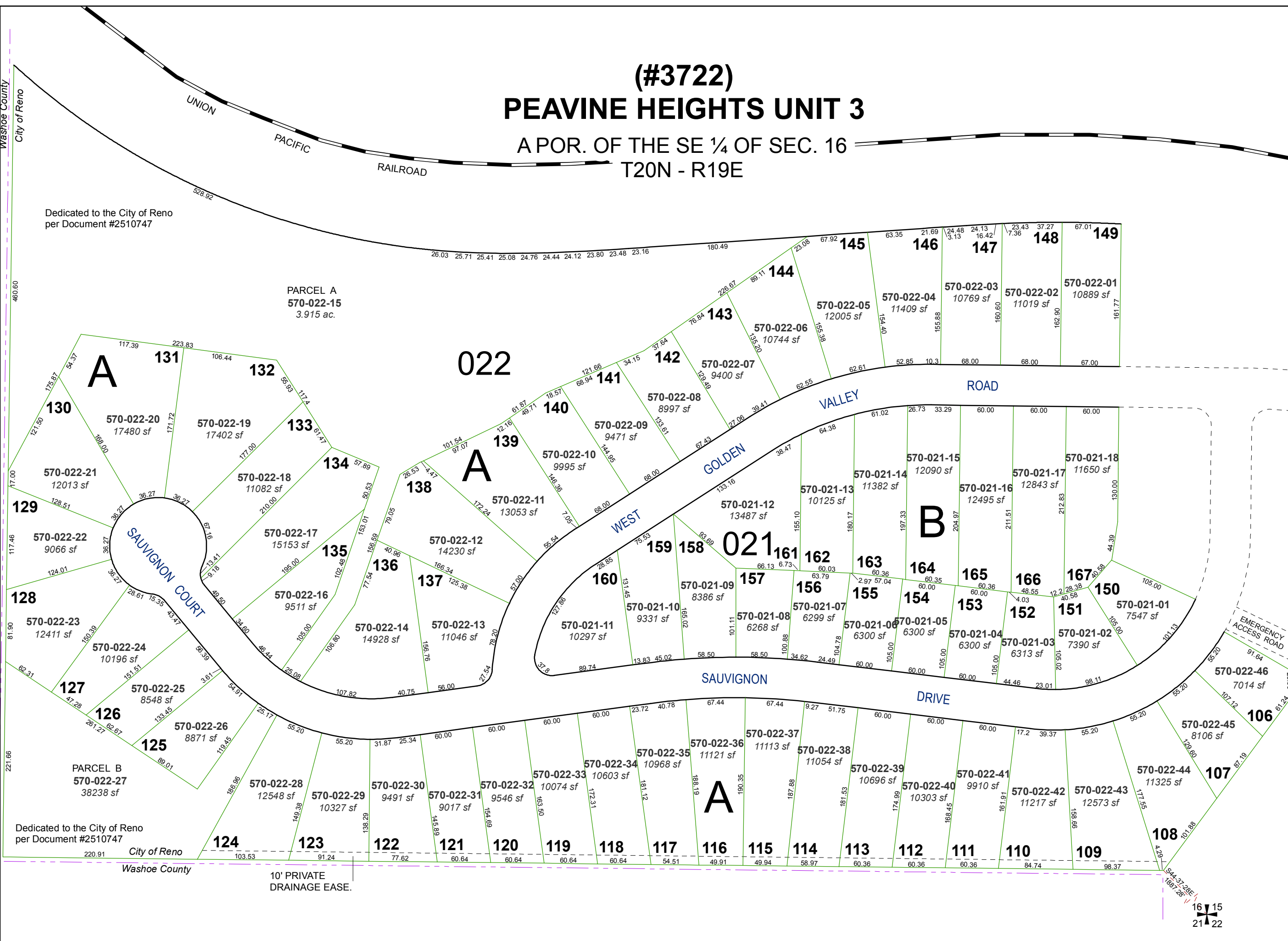
area previously shown on map(s)

082-18

NOTE: This map was prepared for the use of the Washoe County Assessor for assessment and illustrative purposes only. It does not represent a survey of the premises. No liability is assumed as to the sufficiency or accuracy of the data delineated hereon.

(#3722) PEAVINE HEIGHTS UNIT 3

A POR. OF THE SE ¼ OF SEC. 16 T20N - R19E



10' PRIVATE DRAINAGE EASE.

16
15
21
22

Washoe County
City of Reno

Dedicated to the City of Reno
per Document #2510747

Dedicated to the City of Reno
per Document #2510747

Washoe County
City of Reno