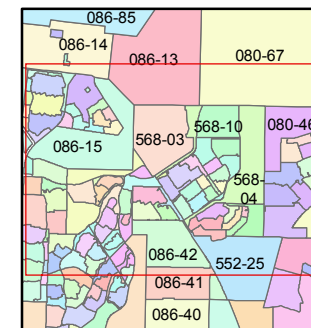
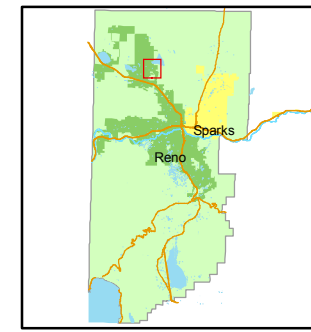


1 inch = 800 feet



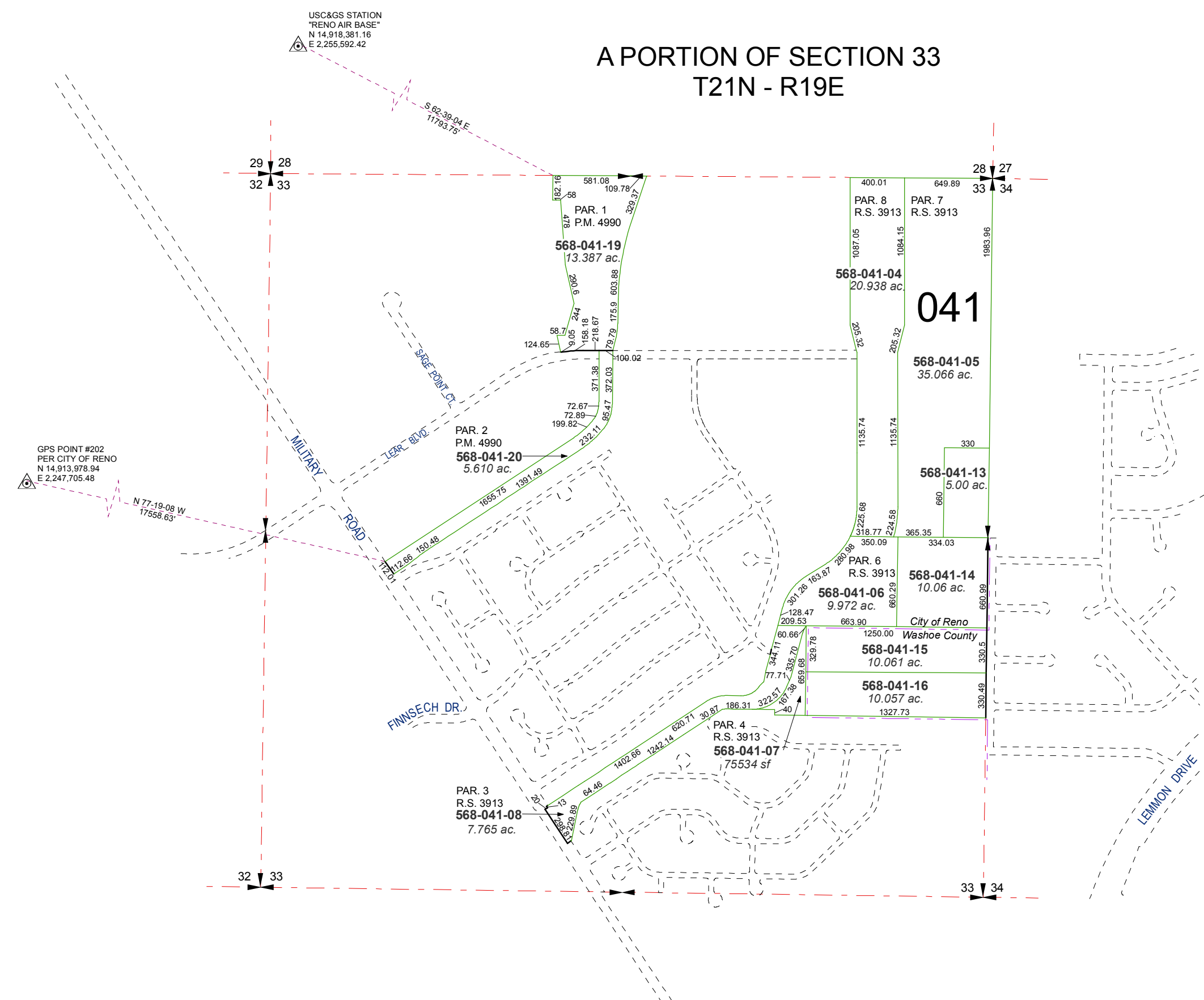
created by: CFB 9/08/2010

last updated: NLH 2/04/11

area previously shown on map(s)
080-02

NOTE: This map was prepared for the use of the Washoe County Assessor for assessment and illustrative purposes only. It does not represent a survey of the premises. No liability is assumed as to the sufficiency or accuracy of the data delineated herein.

**A PORTION OF SECTION 33
T21N - R19E**



USC&GS STATION
"RENO AIR BASE"
N 14,918,381.16
E 2,255,592.42

GPS POINT #202
PER CITY OF RENO
N 14,913,978.94
E 2,247,705.48

PAR. 1
P.M. 4990
568-041-19
13.387 ac.

PAR. 2
P.M. 4990
568-041-20
5.610 ac.

PAR. 3
R.S. 3913
568-041-08
7.765 ac.

PAR. 4
R.S. 3913
568-041-07
75534 sf

PAR. 6
R.S. 3913
568-041-06
9.972 ac.

568-041-15
10.061 ac.

568-041-16
10.057 ac.

568-041-04
20.938 ac.

568-041-05
35.066 ac.

568-041-13
5.00 ac.

568-041-14
10.06 ac.

PAR. 7
R.S. 3913

PAR. 8
R.S. 3913

041

City of Reno
Washoe County