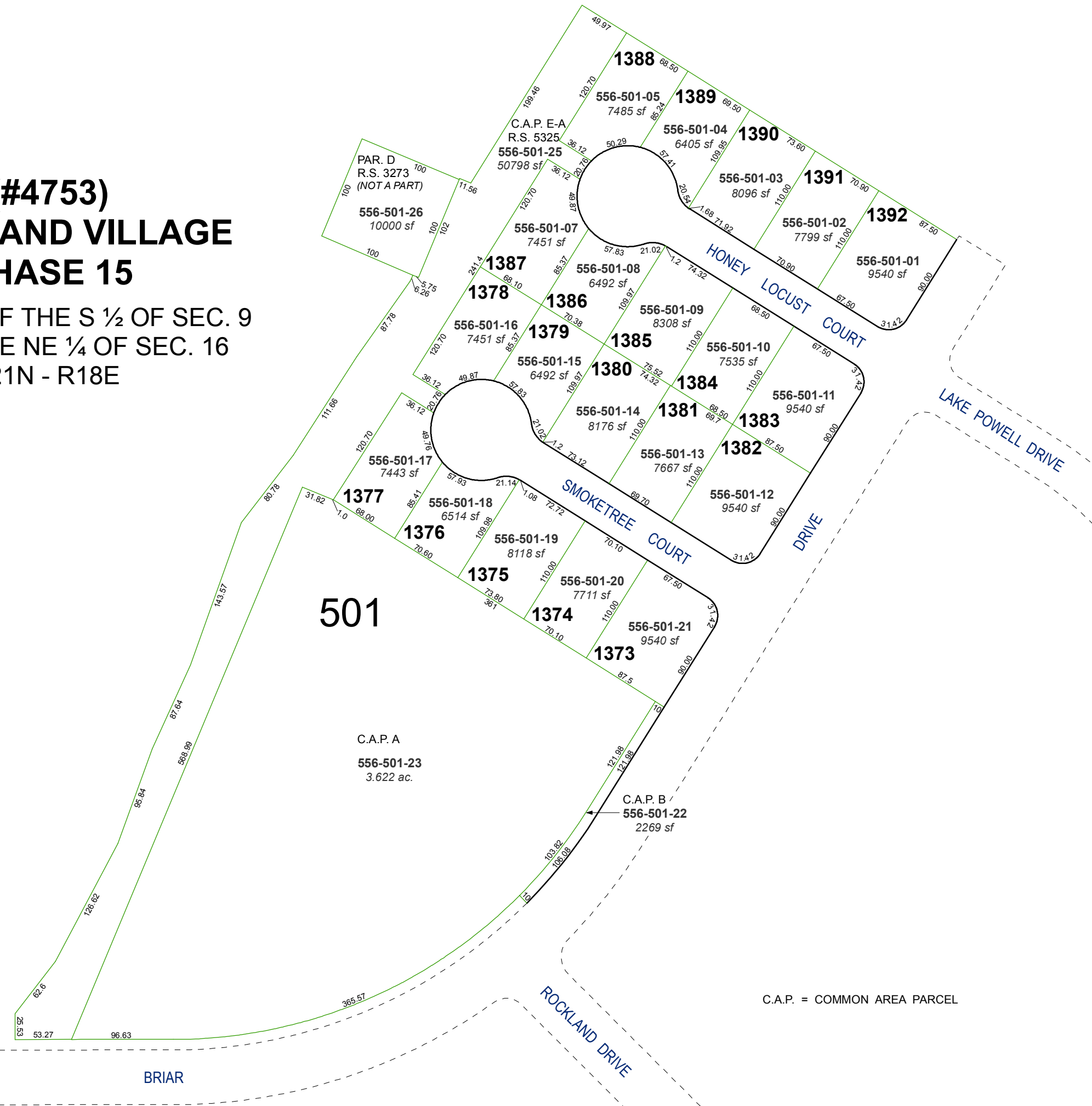


**(#4753)
WOODLAND VILLAGE
PHASE 15**

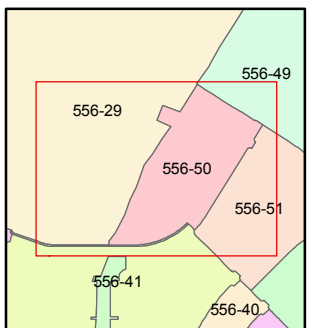
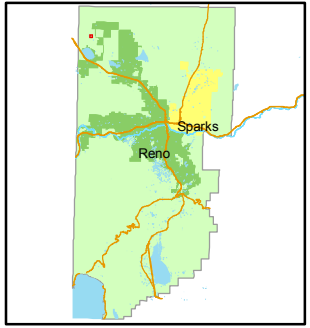
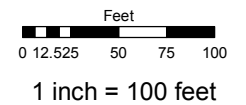
PORTIONS OF THE S 1/2 OF SEC. 9
AND OF THE NE 1/4 OF SEC. 16
T21N - R18E



Assessor's Map Number
556-50

STATE OF NEVADA
WASHOE COUNTY
ASSESSOR'S OFFICE
Joshua G. Wilson, Assessor

1001 East Ninth Street
Building D
Reno, Nevada 89512
(775) 328-2231



created by: NLH 5/19/2011

last updated: _____

area previously shown on map(s)

C.A.P. = COMMON AREA PARCEL

NOTE: This map was prepared for the use of the Washoe County Assessor for assessment and illustrative purposes only. It does not represent a survey of the premises. No liability is assumed as to the sufficiency or accuracy of the data delineated herein.