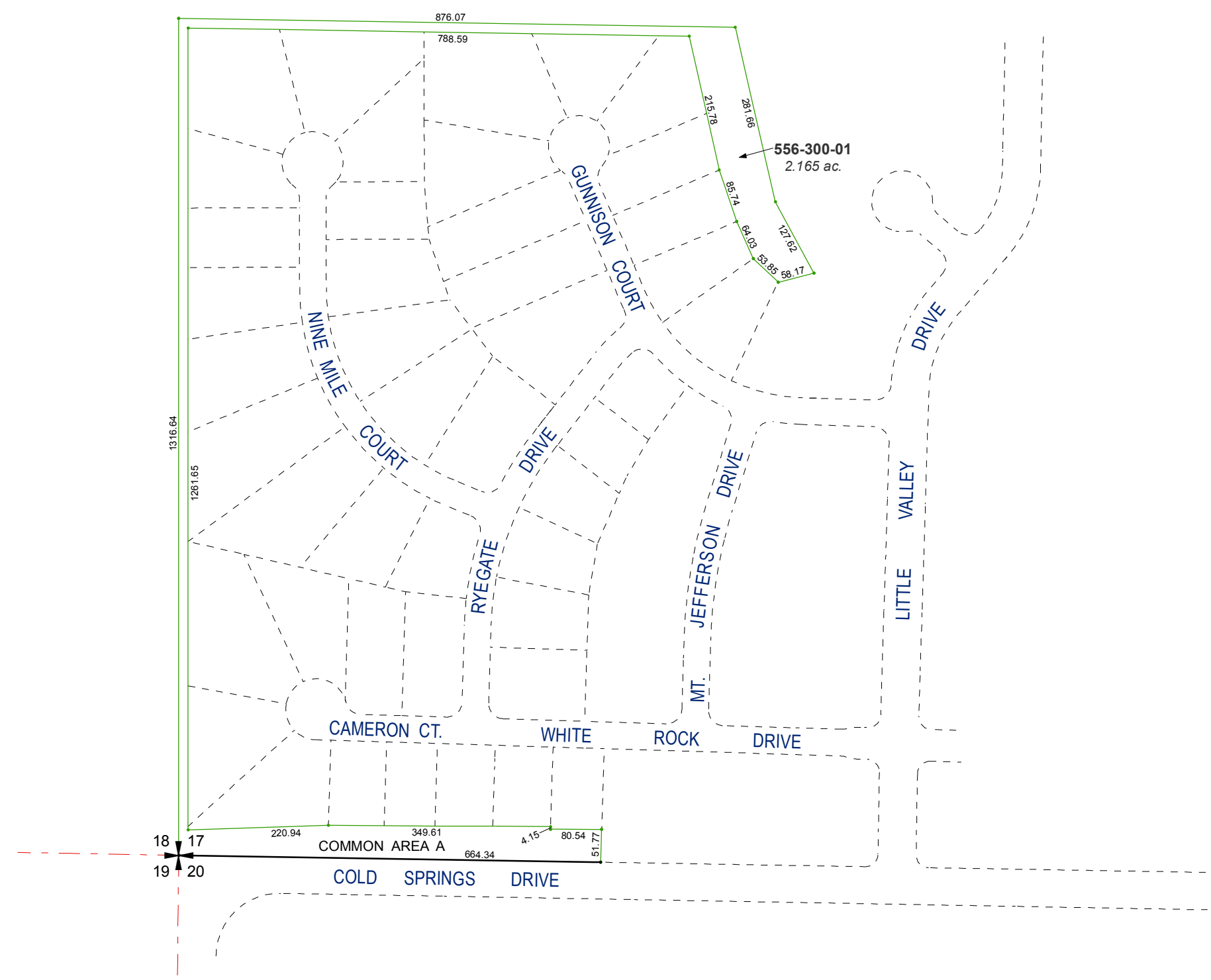
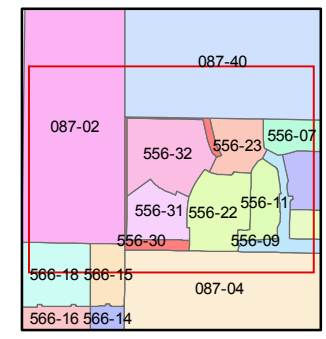
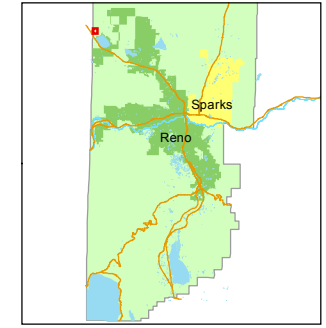
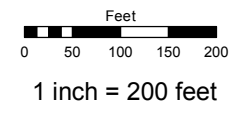


(#4317)
PEAVINE VIEW ESTATES UNIT 9
 PORTION OF THE SW ¼ SECTION 17
 T21N - R18E



Assessor's Map Number
556-30

STATE OF NEVADA
WASHOE COUNTY
ASSESSOR'S OFFICE
 Joshua G. Wilson, Assessor
 1001 East Ninth Street
 Building D
 Reno, Nevada 89512
 (775) 328-2231



created by: EMG 7/30/2014
 last updated: _____
 area previously shown on map(s)
556-02

NOTE: This map was prepared for the use of the Washoe County Assessor for assessment and illustrative purposes only. It does not represent a survey of the premises. No liability is assumed as to the sufficiency or accuracy of the data delineated hereon.