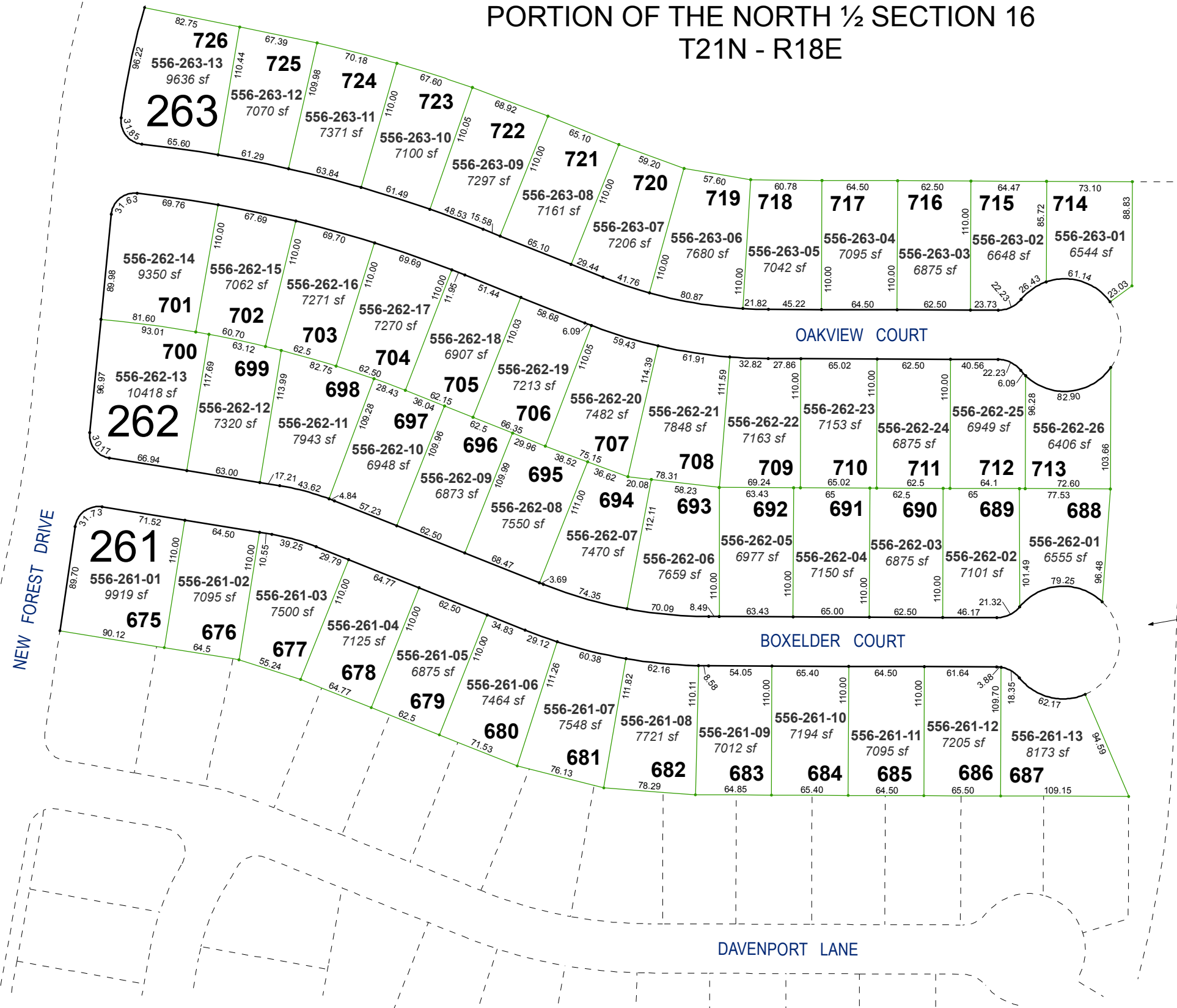


# (#4144) WOODLAND VILLAGE PHASE 8

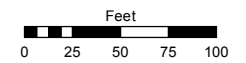
PORTION OF THE NORTH ½ SECTION 16  
T21N - R18E



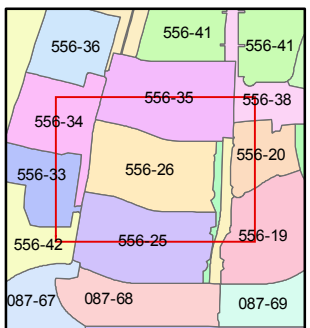
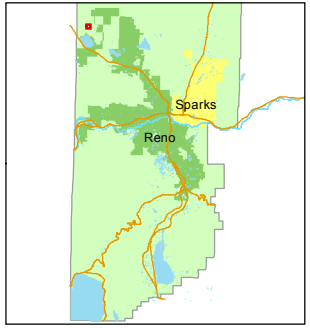
Assessor's Map Number  
**556-26**

STATE OF NEVADA  
**WASHOE COUNTY**  
ASSESSOR'S OFFICE  
Joshua G. Wilson, Assessor

1001 East Ninth Street  
Building D  
Reno, Nevada 89512  
(775) 328-2231



1 inch = 100 feet



← 556-24

556-18



created by: EMG 7/30/2014

last updated: \_\_\_\_\_

area previously shown on map(s)  
556-12

NOTE: This map was prepared for the use of the Washoe County Assessor for assessment and illustrative purposes only. It does not represent a survey of the premises. No liability is assumed as to the sufficiency or accuracy of the data delineated hereon.