

**(#4151)  
PEAVINE VIEW ESTATES  
UNIT 8**

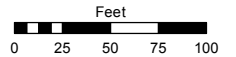
PORTION OF THE SW ¼ SECTION 17  
T21N - R18E

Assessor's Map Number

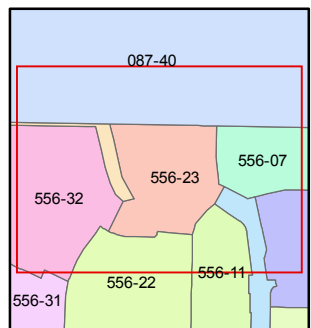
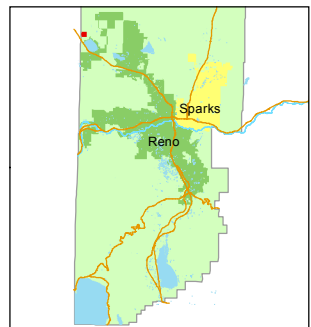
**556-23**

STATE OF NEVADA  
**WASHOE COUNTY**  
ASSESSOR'S OFFICE  
Joshua G. Wilson, Assessor

1001 East Ninth Street  
Building D  
Reno, Nevada 89512  
(775) 328-2231



1 inch = 100 feet



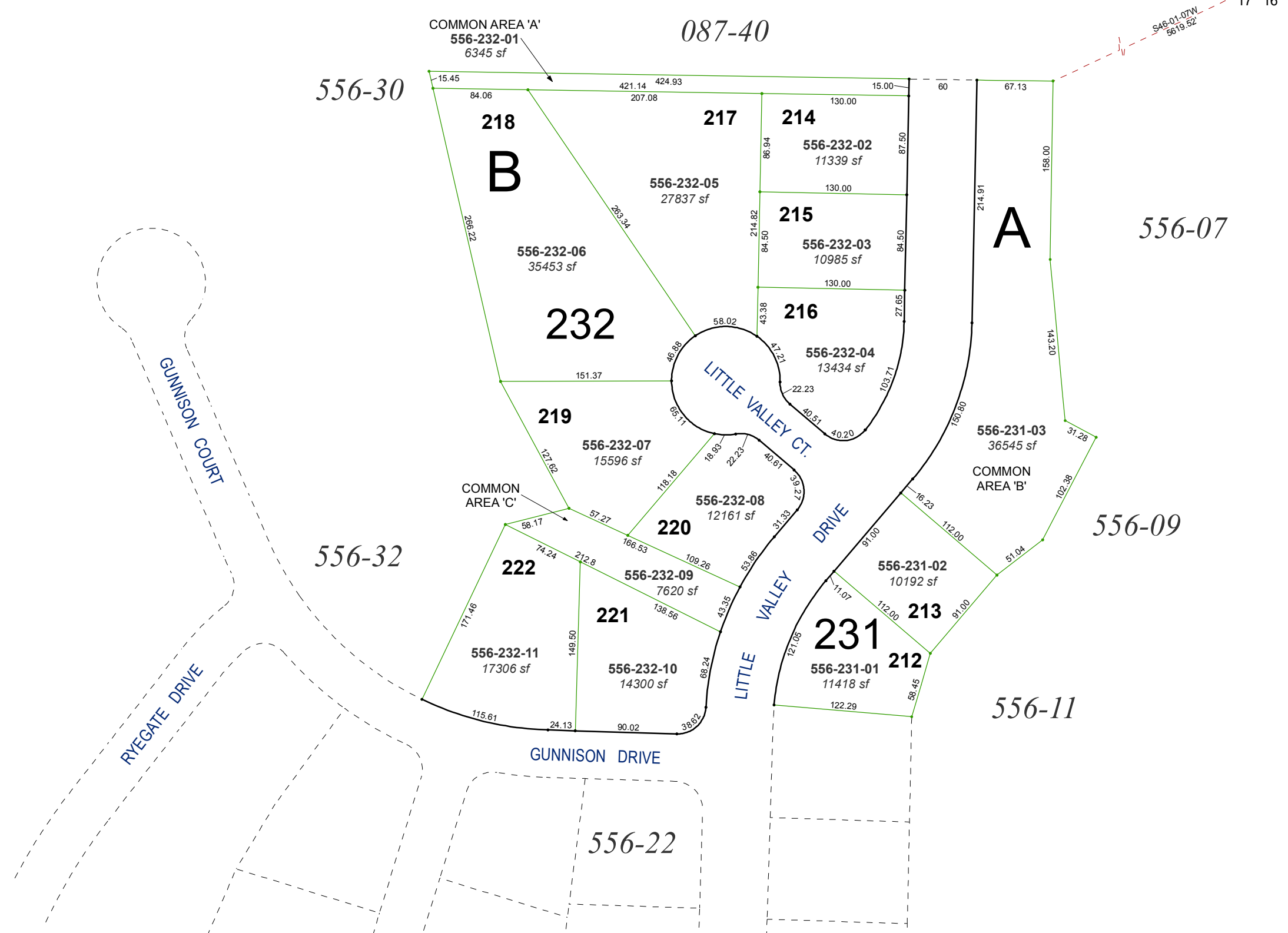
created by: EMG 7/30/2014

last updated: \_\_\_\_\_

area previously shown on map(s)

556-02

NOTE: This map was prepared for the use of the Washoe County Assessor for assessment and illustrative purposes only. It does not represent a survey of the premises. No liability is assumed as to the sufficiency or accuracy of the data delineated hereon.



S46-01-07W  
5619.52

087-40

556-30

556-07

556-09

556-11

556-32

556-22

GUNNISON COURT

RYEGATE DRIVE

GUNNISON DRIVE

LITTLE VALLEY CT.

LITTLE VALLEY DRIVE

COMMON AREA 'A'  
556-232-01  
6345 sf

COMMON AREA 'C'

A

B

COMMON AREA 'B'

218

217

214

215

216

232

219

220

222

221

231

212

213