

WASHOE CO. GPS "RSTEAD"
N=14,903,994.708
E= 2,258,859.558

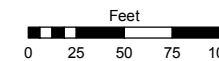
N61-55-45W
12,823.27'

Assessor's Map Number

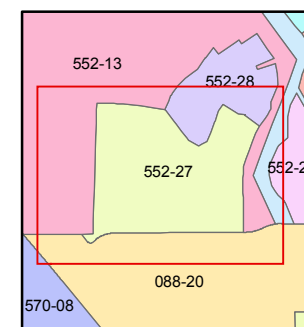
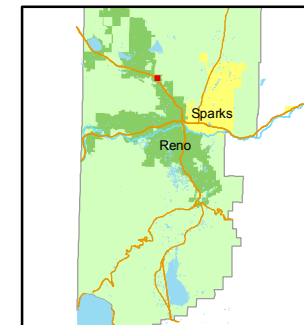
552-27

STATE OF NEVADA
WASHOE COUNTY
ASSESSOR'S OFFICE
Joshua G. Wilson, Assessor

1001 East Ninth Street
Building D
Reno, Nevada 89512
(775) 328-2231



1 inch = 100 feet



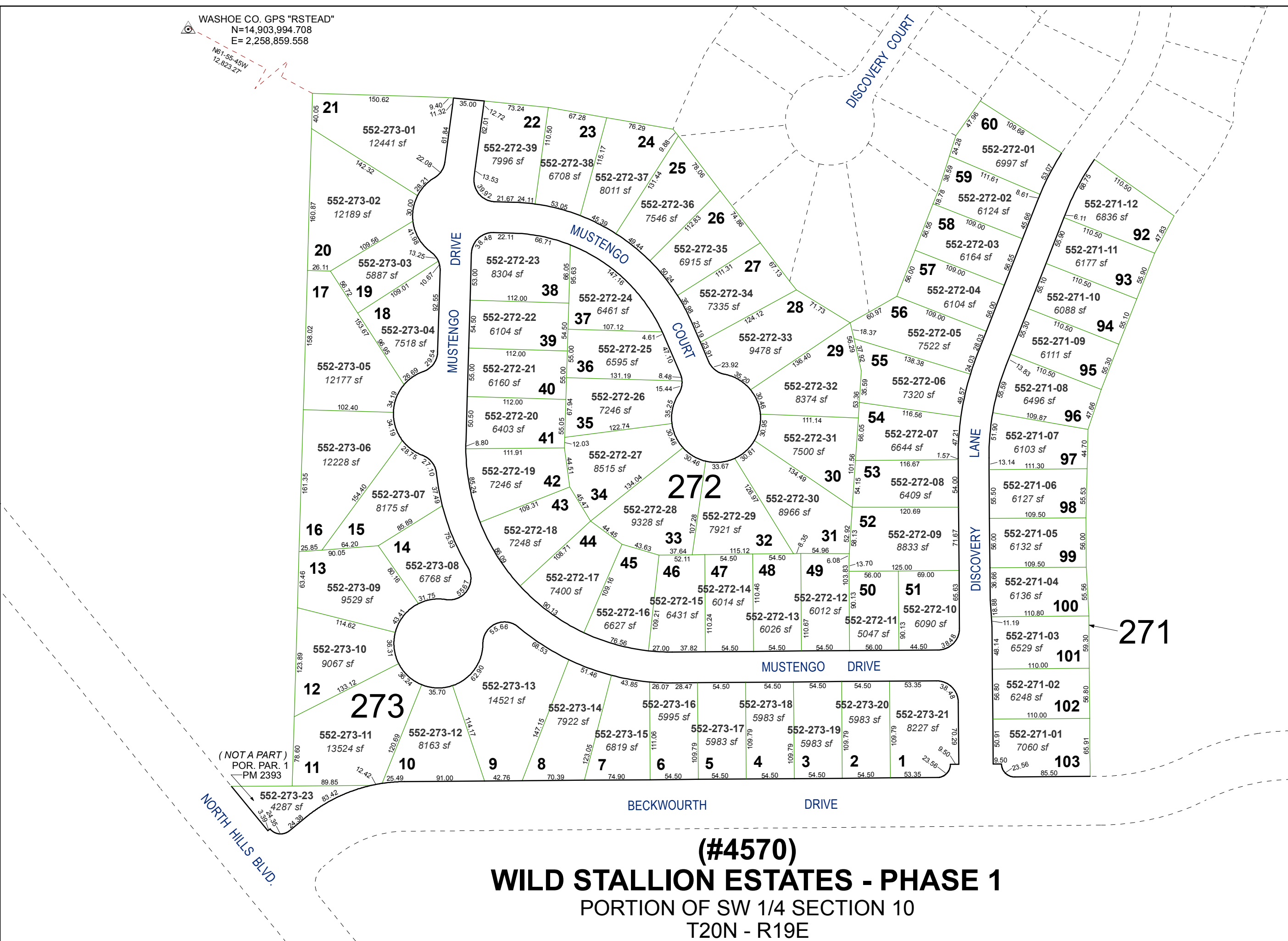
created by: KSB 3/21/11

last updated: _____

area previously shown on map(s)

552-13

NOTE: This map was prepared for the use of the Washoe County Assessor for assessment and illustrative purposes only. It does not represent a survey of the premises. No liability is assumed as to the sufficiency or accuracy of the data delineated hereon.



(NOT A PART)
POR. PAR. 1
—PM 2393

(#4570)
WILD STALLION ESTATES - PHASE 1
PORTION OF SW 1/4 SECTION 10
T20N - R19E