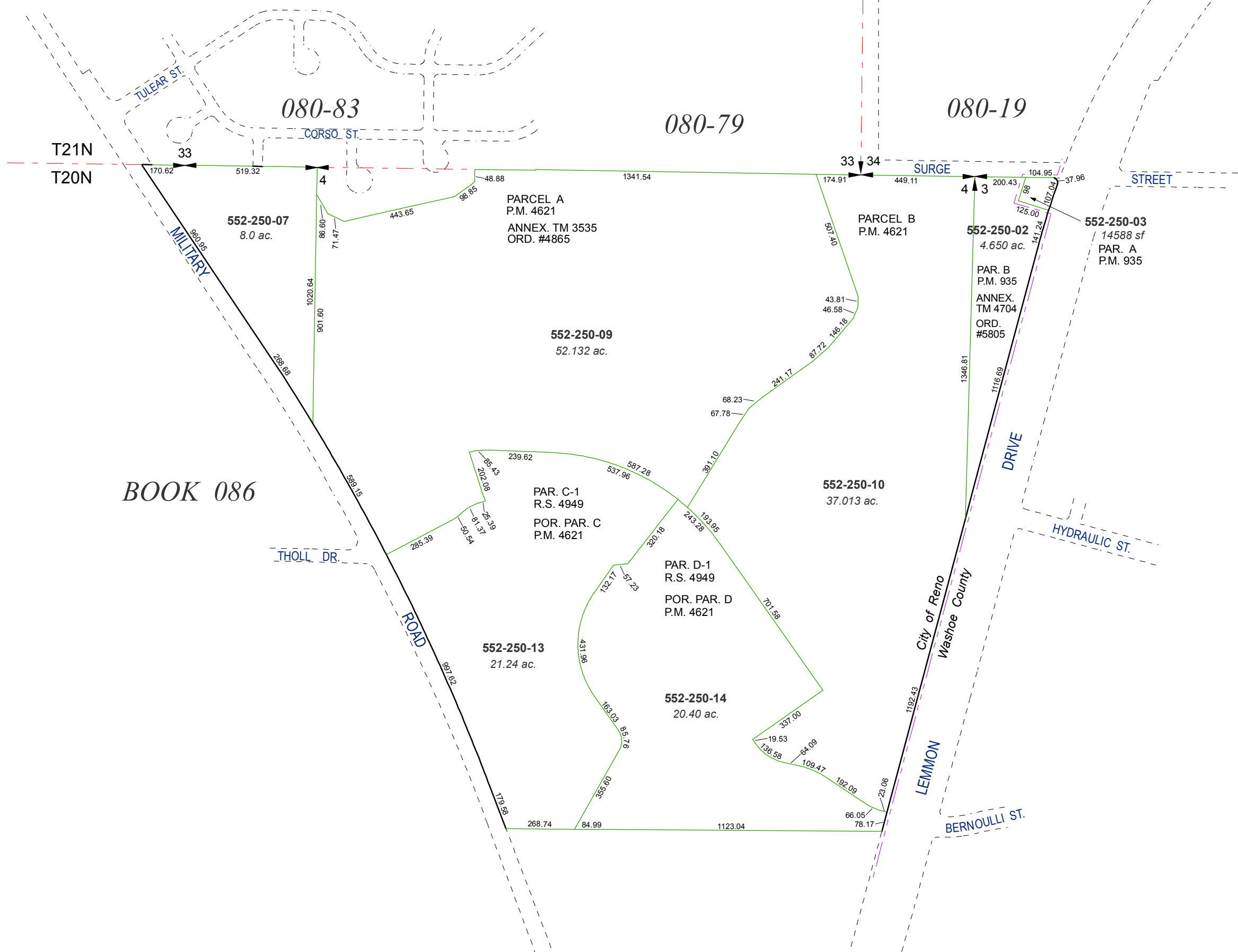


PORTION OF THE N 1/2 OF SECTIONS 3 & 4
T20N - R19E

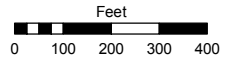


Assessor's Map Number

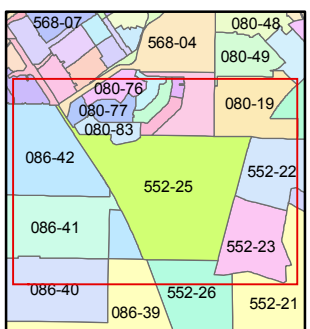
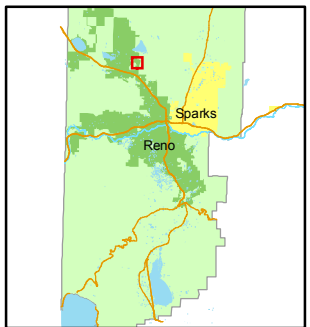
552-25

STATE OF NEVADA
WASHOE COUNTY
ASSESSOR'S OFFICE
Joshua G. Wilson, Assessor

1001 East Ninth Street
Building D
Reno, Nevada 89512
(775) 328-2231



1 inch = 400 feet



created by: KSB 1/24/11

last updated: _____

area previously shown on map(s)

080-79, 086-42, 552-26

NOTE: This map was prepared for the use of the Washoe County Assessor for assessment and illustrative purposes only. It does not represent a survey of the premises. No liability is assumed as to the sufficiency or accuracy of the data delineated herein.