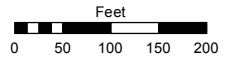


(#1088)
MEDALLION ESTATES UNIT NO. 2
 POR. OF THE SOUTH ½ OF NORTH ½ SEC. 10
 T20N - R19E

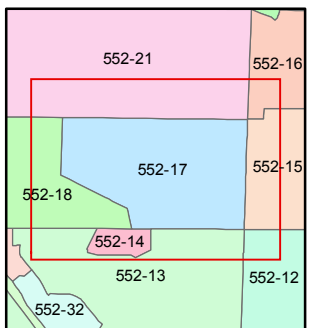
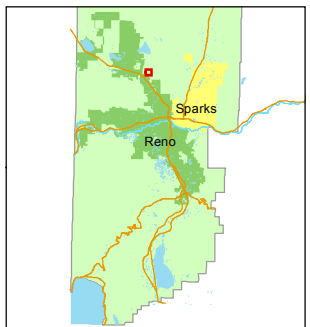
Assessor's Map Number
552-17

STATE OF NEVADA
WASHOE COUNTY
 ASSESSOR'S OFFICE
 Joshua G. Wilson, Assessor

1001 East Ninth Street
 Building D
 Reno, Nevada 89512
 (775) 328-2231



1 inch = 200 feet



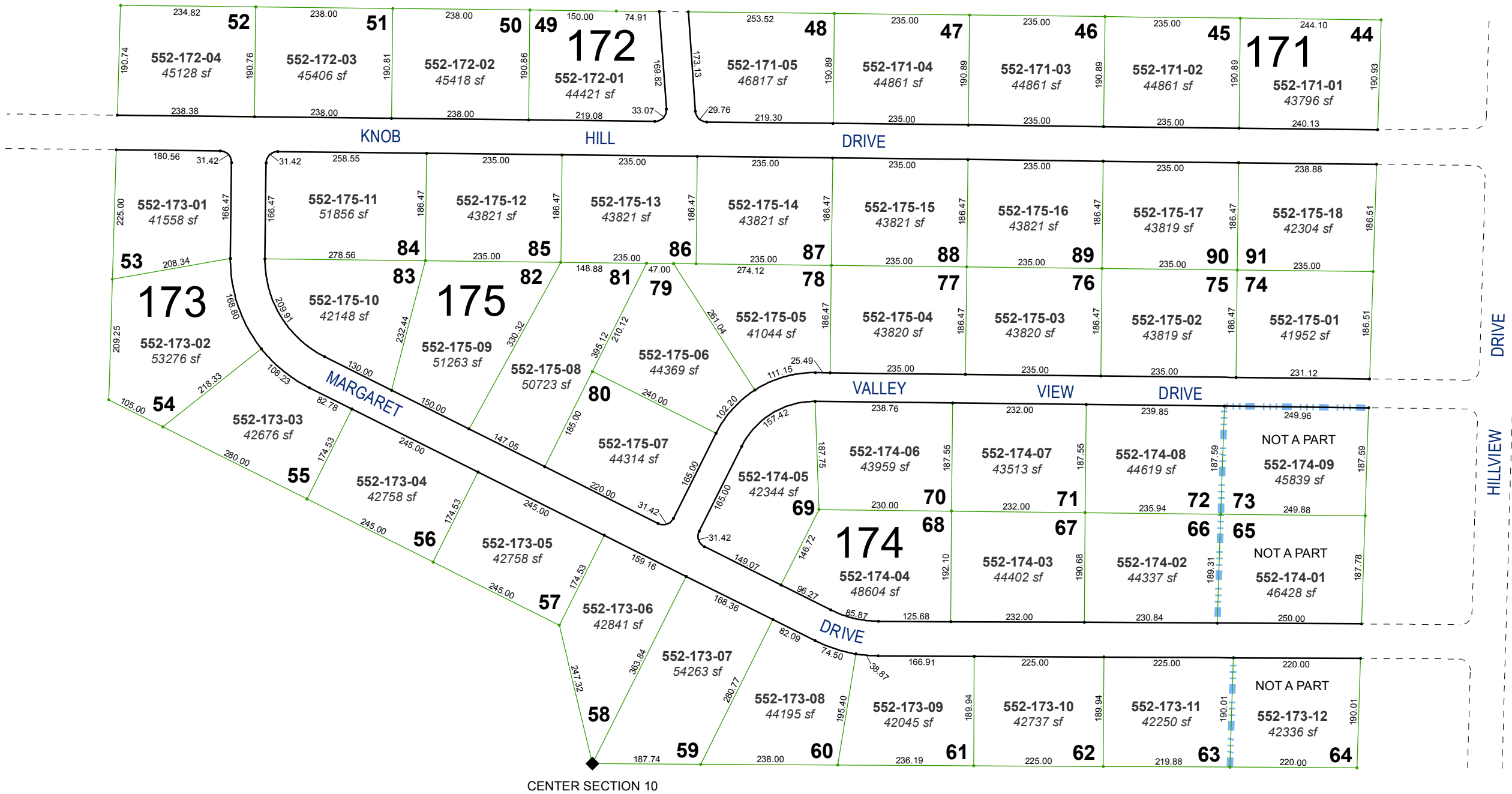
created by: EMG 9/02/2014

last updated: _____

area previously shown on map(s)

088-09

NOTE: This map was prepared for the use of the Washoe County Assessor for assessment and illustrative purposes only. It does not represent a survey of the premises. No liability is assumed as to the sufficiency or accuracy of the data delineated hereon.



CENTER SECTION 10